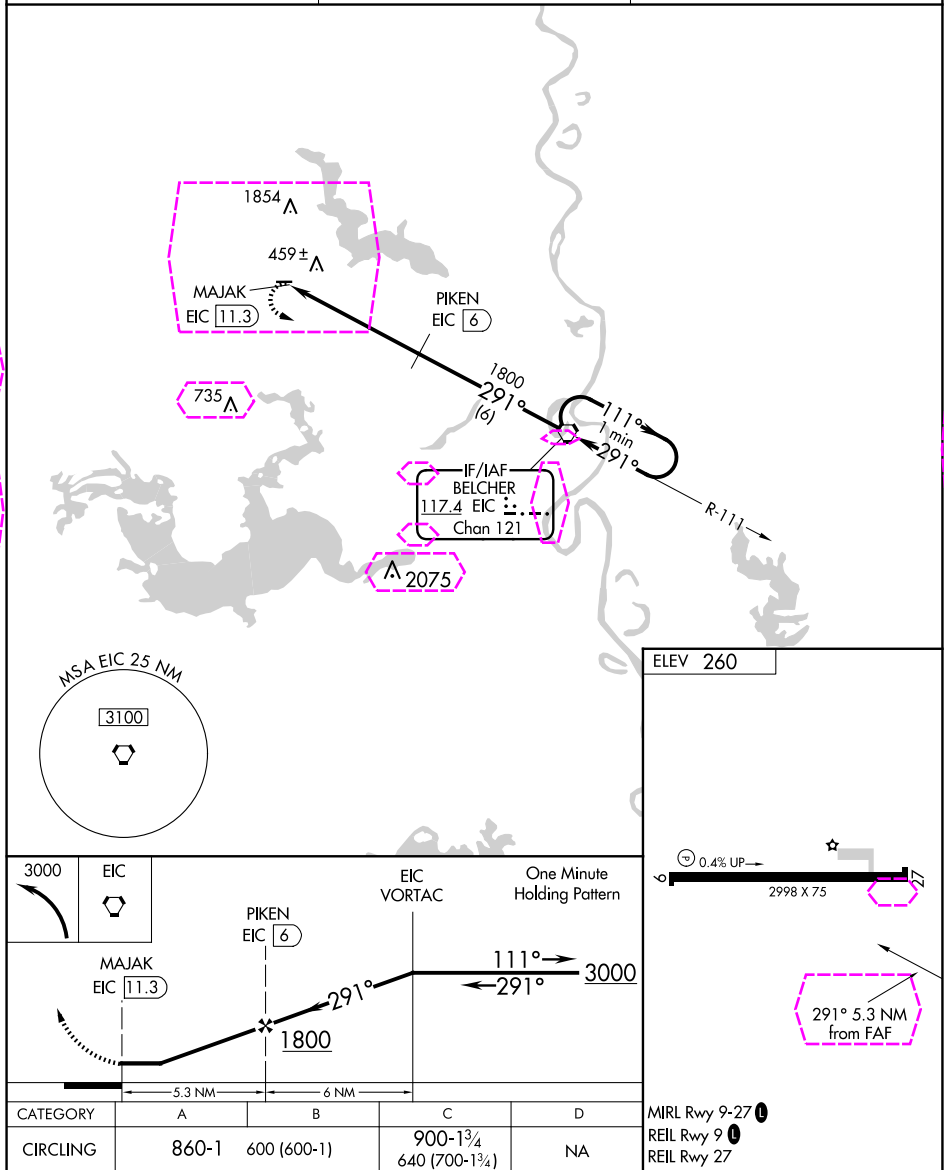


VORTAC EIC <u>117.4</u> Chan <b>121</b>	APP CRS <b>291°</b>	Rwy Idg TDZE Apt Elev	<b>N/A</b> <b>N/A</b> <b>260</b>
---	------------------------	-----------------------------	--

VOR/DME-A  
VIVIAN (3F4)

<p><b>▼</b> Circling NA north of Rwy 9-27. Use Shreveport Rgnl altimeter setting; when not received, use Shreveport Downtown altimeter setting and increase all MDAs 20 feet. Procedure NA at night. Helicopter visibility reduction below 1 SM NA.</p> <p><b>▲ NA</b></p>	<p><b>MISSED APPROACH:</b> Climbing left turn to 3000 direct EIC VORTAC and hold.</p>
--	---

SHREVEPORT APP CON <b>119.9 335.55</b>	GCO <b>135.075</b>	UNICOM <b>122.8</b> (CTAF) <b>1</b>
---	-----------------------	--



VIVIAN, LOUISIANA

AL-5713 (FAA)

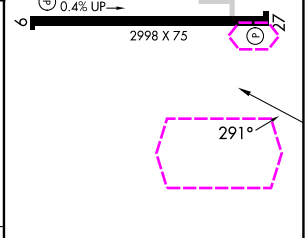
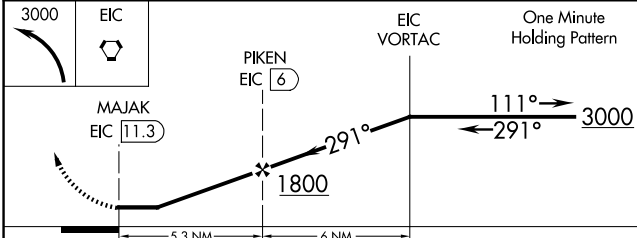
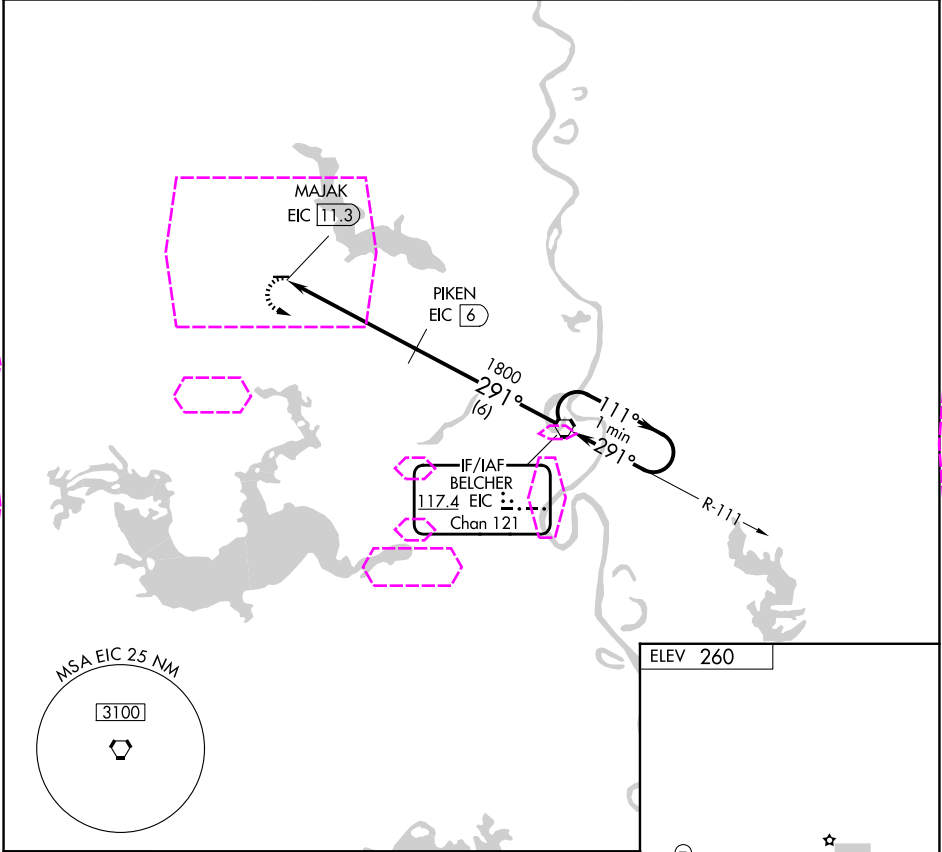
25219

VORTAC EIC <b>117.4</b> Chan <b>121</b>	APP CRS <b>291°</b>	Rwy Ldg TDZE Apt Elev <b>N/A</b> <b>N/A</b> <b>260</b>
---	------------------------	---

VOR/DME-A  
VIVIAN (3F4)

<p>▼ Circling NA north of Rwy 9-27. Use Shreveport Rgnl altimeter setting; when not received, use Shreveport Downtown altimeter setting and increase all MDAs 20 feet. Procedure NA at night. Helicopter visibility reduction below 1 SM NA.</p>	MISSED APPROACH: Climbing left turn to 3000 direct EIC VORTAC and hold.
--	---

SHREVEPORT APP CON <b>119.9 335.55</b>	GCO <b>135.075</b>	UNICOM <b>122.8 (CTAF) 0</b>
---	-----------------------	---------------------------------



CATEGORY	A	B	C	D
CIRCLING	860-1	600 (600-1)	900-1 3/4 640 (700-1 3/4)	NA

MIRL Rwy 9-27 0
REIL Rwy 9 0
REIL Rwy 27

VIVIAN, LOUISIANA  
Amdt 3C 19MAY22

32°52'N-94°01'W

VIVIAN (3F4)  
VOR/DME-A