

FORT COLLINS/LOVELAND, COLORADO

AL-5677 (FAA)

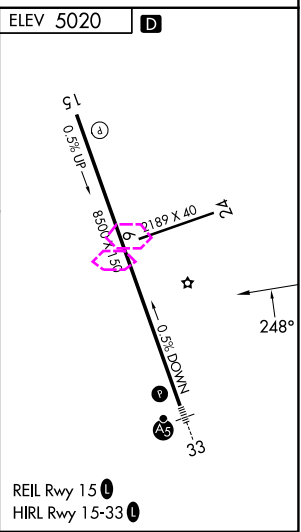
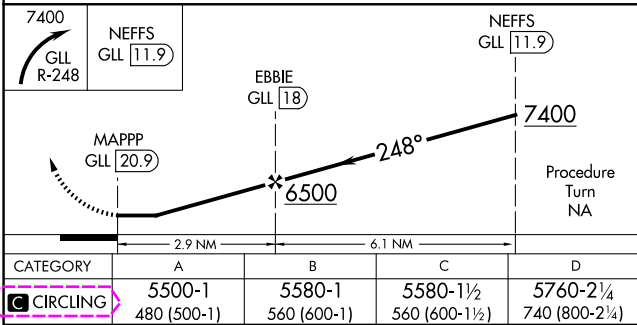
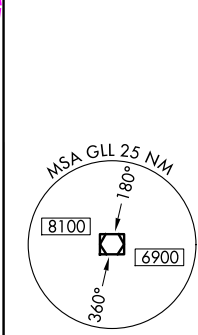
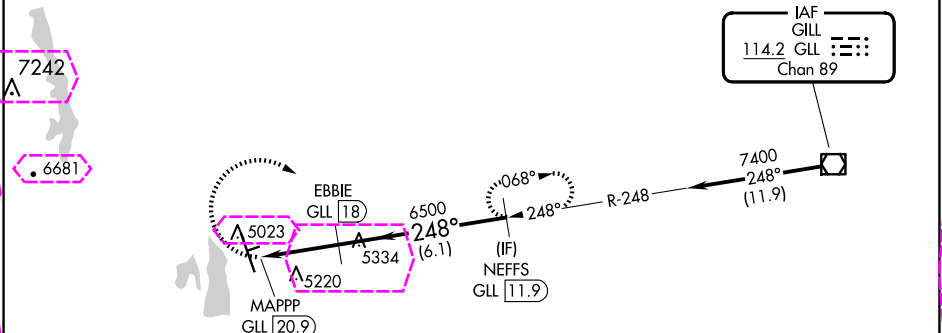
25163

VOR/DME GLL 114.2 Chan 89	APP CRS 248°	Rwy Ldg TDZE Apt Elev N/A N/A 5020
---	------------------------	--

VOR-A
NORTHERN COLORADO RGNL (FNL)

DME required.		MISSED APPROACH: Climbing right turn to 7400 via GLL VOR/DME R-248 to NEFFS/GLL 11.9 DME and hold.		
▼ ▲ Circling Rwy 24 NA at night. When local altimeter setting not received, use Denver Intl altimeter setting and increase all MDA 160 feet and Cat C/D visibility ½ SM.				
ATIS 135.075	DENVER APP CON 134.85 251.125	NOCO TOWER ★ 118.4 (CTAF) 0	GND CON 121.65	CLNC DEL 120.25 (When twr closed)

Procedure NA for arrivals on GLL VOR/DME
airway radials 221 CW 301.



VOR/DME GLL 114.2 Chan 89	APP CRS 248°	Rwy Ldg TDZE Apt Elev	N/A N/A 5020
---	------------------------	-----------------------------	---

VOR-A
NORTHERN COLORADO RGNL (FNL)

DME required.

T Circling Rwy 24 NA at night. When local altimeter setting
A not received, use Denver Intl altimeter setting and increase
all MDA 160 feet and Cat C/D visibility $\frac{1}{2}$ SM.

MISSED APPROACH: Climbing right turn to 7400 via GLL VOR/DME R-248 to NEFFS/GLL 11.9 DME and hold.

ATIS 135.075	DENVER APP CON 134.85 251.125	NOCO TOWER★ 118.4 (CTAF) 0	GND CON 121.65	CLNC DEL 120.25 (When twr closed)
------------------------	---	--------------------------------------	--------------------------	--

Procedure NA for arrivals on GLL VOR/DME
airway radials 221 CW 301.

