

FORT COLLINS/LOVELAND, COLORADO

AL-5677 (FAA)

25163

WAAS CH 97511 W33A	APP CRS 331°	Rwy Ldg 8500 TDZE 5020 Apt Elev 5020
--	------------------------	---

RNAV (GPS) RWY 33

NORTHERN COLORADO RGNL (FNL)

RNP APCH-GPS.

⚠

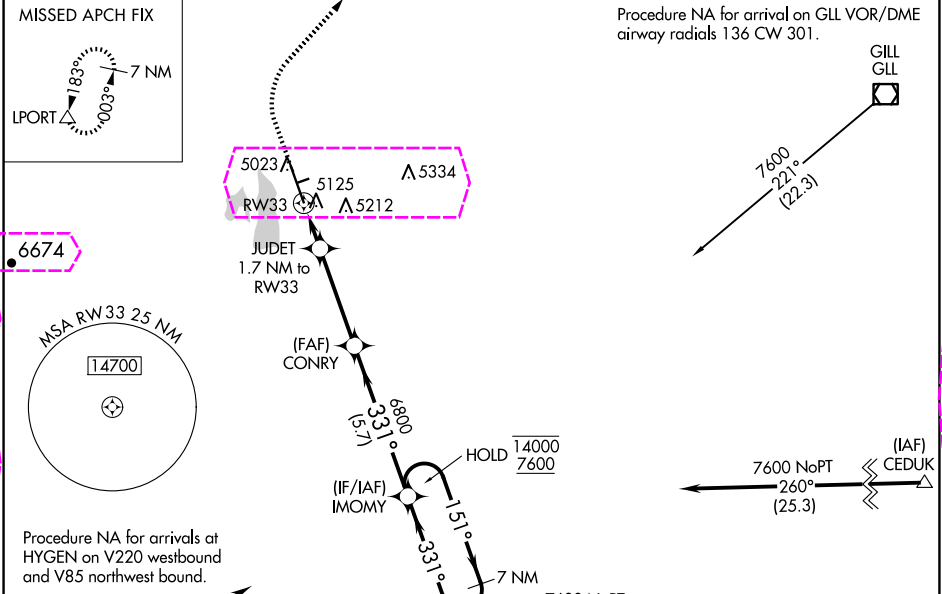
⚠

Circling Rwy 24 NA at night. For uncompensated Baro-VNAV systems, LNAV/VNAV NA below -24°C or above 54°C. For inop ALS, increase LNAV/VNAV all Cats visibility to ¾ SM and LNAV visibility Cat C/D to 1 SM.

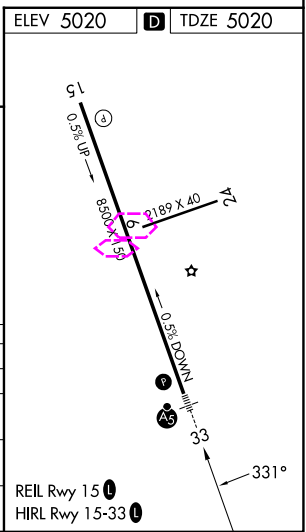
MALSR

MISSED APPROACH: Climb to 5600, then climbing right turn to 7400 direct LPORT and hold.

ATIS 135.075	DENVER APP CON 134.85 251.125	NOCO TOWER ★ 118.4 (CTAF) 0	GND CON 121.65	CLNC DEL 120.25 (When twr closed)
------------------------	---	---------------------------------------	--------------------------	--



<p>5600 7400 LPORT</p> <p>△</p>		<p>IMOMY 7 NM Holding Pattern</p> <p>151° → 14000</p> <p>← 331° 7600</p> <p>GP 3.00° TCH 51</p>		
<p>1 NM to RW33</p> <p>1 NM</p> <p>0.8</p> <p>3.7 NM</p> <p>5.7 NM</p>		<p>CONRY 6800</p> <p>331°</p> <p>6800</p>		
CATEGORY	A	B	C	D
LPV DA	5220-½ 200 (200-½)			
LNAV/VNAV DA	5329-½ 309 (400-½)			
LNAV MDA	5380-½ 360 (400-½)	5380-⅝ 360 (400-⅝)		
CIRCLING	5480-1 460 (500-1)	5520-1 500 (500-1)	5520-1½ 500 (500-1½)	5700-2¼ 680 (700-2¼)



FORT COLLINS/LOVELAND, COLORADO

Amtd 2 24MAR22

40°27'N-105°01'W

NORTHERN COLORADO RGNL (FNL)

RNAV (GPS) RWY 33

SW-1, 10 JUL 2025 to 07 AUG 2025

SW-1, 10 JUL 2025 to 07 AUG 2025


FORT COLLINS/LOVELAND, COLORADO

AL-5677 (FAA)

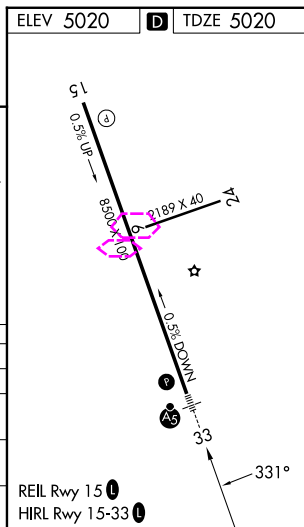
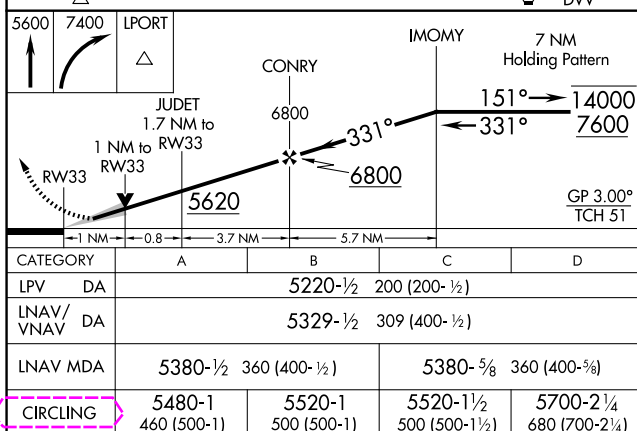
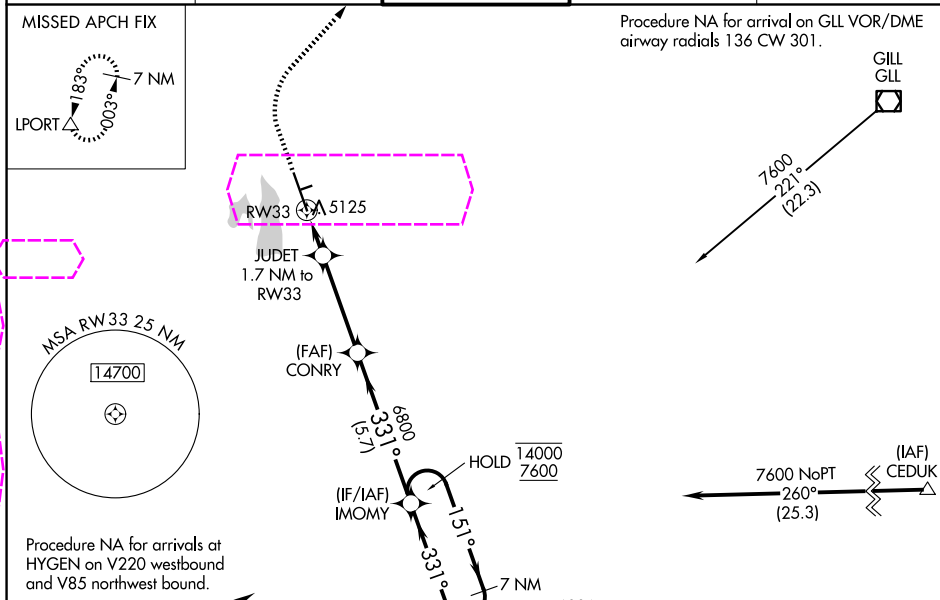
25219

WAAS CH 97511 W33A	APP CRS 331°	Rwy Ldg 8500 TDZE 5020 Apt Elev 5020
--	------------------------	---

RNAV (GPS) RWY 33 **NORTHERN COLORADO RGNL (FNL)**

RNP APCH-GPS.	MALSR 	MISSED APPROACH: Climb to 5600, then climbing right turn to 7400 direct LPORT and hold.
---------------	--	---

ATIS 135.075	DENVER APP CON 134.85 251.125	NOCO TOWER ★ 118.4 (CTAF) 0	GND CON 121.65	CLNC DEL 120.25 (When twr closed)
------------------------	---	---------------------------------------	--------------------------	--



FORT COLLINS/LOVELAND, COLORADO

Amdt 2 24MAR22

40°27'N-105°01'W

NORTHERN COLORADO RGNL (FNL)

RNAV (GPS) RWY 33