

FORT COLLINS/LOVELAND, COLORADO

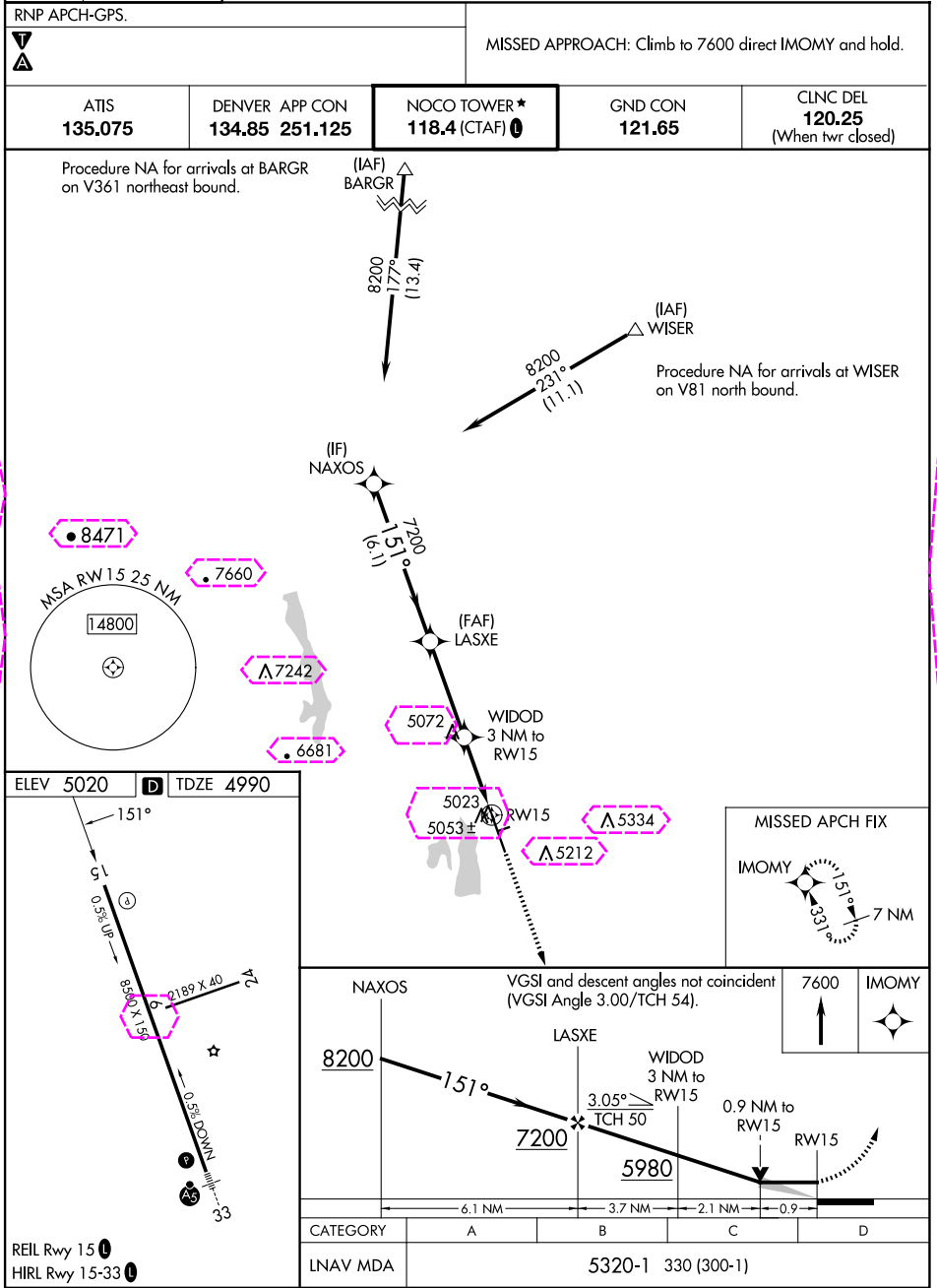
AL-5677 (FAA)

25163

APP CRS	Rwy Ldg	8500
151°	TDZE	4990
	Apt Elev	5020

# RNAV (GPS) RWY 15

NORTHERN COLORADO RGNL (FNL)



SW-1, 10 JUL 2025 to 07 AUG 2025

SW-1, 10 JUL 2025 to 07 AUG 2025

FORT COLLINS/LOVELAND, COLORADO

AL-5677 (FAA)

25219

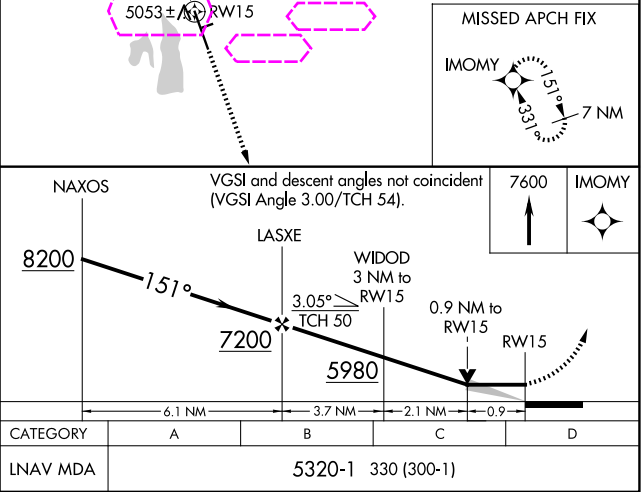
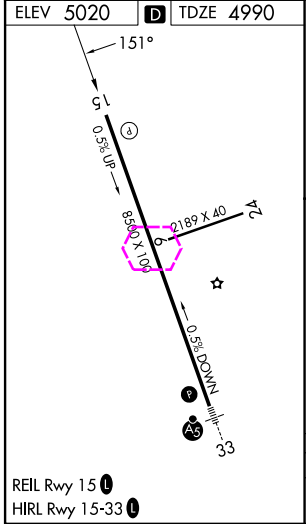
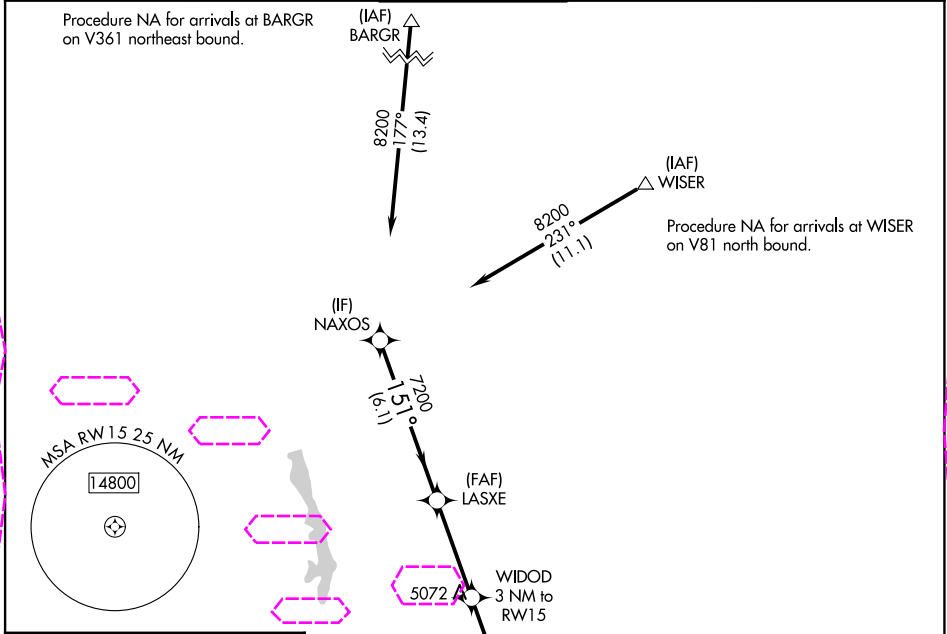
APP CRS	Rwy Ldg	8500
151°	TDZE	4990
	Apt Elev	5020

# RNAV (GPS) RWY 15

NORTHERN COLORADO RGNL (FNL)

RNP APCH-GPS.	MISSED APPROACH: Climb to 7600 direct IMOMY and hold.
---------------	---

ATIS 135.075	DENVER APP CON 134.85 251.125	NOCO TOWER* 118.4 (CTAF) 0	GND CON 121.65	CLNC DEL 120.25 (When twr closed)
-----------------	----------------------------------	-------------------------------	-------------------	---



SW-1, 07 AUG 2025 to 04 SEP 2025

SW-1, 07 AUG 2025 to 04 SEP 2025