

CENTERVILLE, TENNESSEE

AL-5660 (FAA)

23278

APP CRS	Rwy Idg	4002
021°	TDZE	765
	Apt Elev	765

# RNAV (GPS) RWY 2

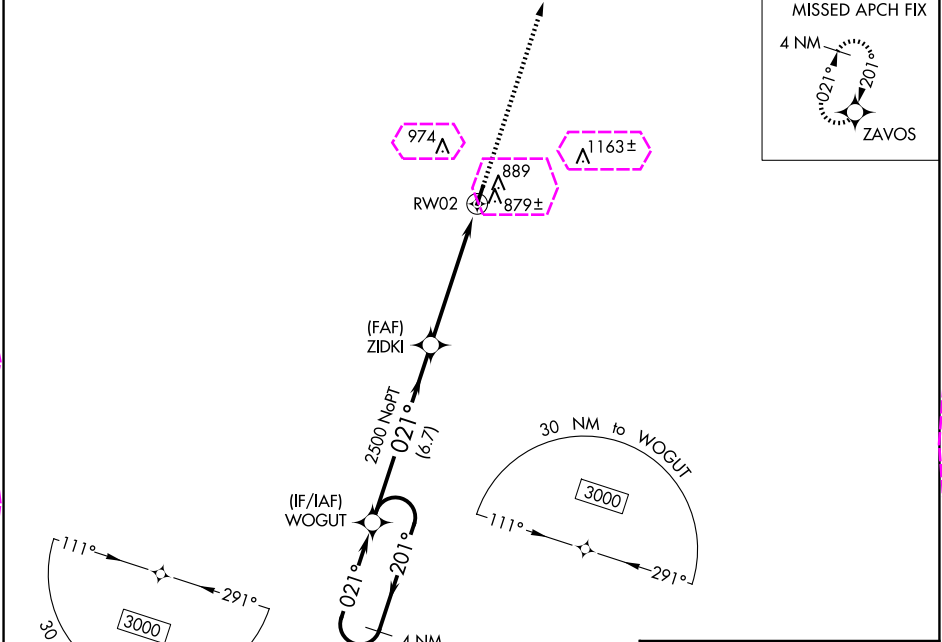
CENTERVILLE MUNI (GHM)

**NA**

Obtain local altimeter setting on CTAF, when not received, use Columbia/Mount Pleasant altimeter setting and increase all MDA 80 feet. Increase LNAV Cats C and D visibility 3/8 mile and Circling Cat D 1/4 mile. DME/DME RNP-0.3 NA. Procedure NA at night. Helicopter visibility reduction below 1 SM NA.

**MISSED APPROACH:**  
Climb to 3000 direct ZAVOS and hold.

MEMPHIS CENTER 125.85 379.25	UNICOM 122.8 (CTAF) 0
---------------------------------	--------------------------



ELEV 765		TDZE 765	
4 NM Holding Pattern WOGUT	VGSI and descent angles not coincident (VGSI Angle 4.00/TCH 43).		
3000	201°	021°	2500
6.7 NM		5.3 NM	
CATEGORY A		CATEGORY B	
CATEGORY C		CATEGORY D	
LNAV MDA		1140-1 375 (400-1)	
CIRCLING		1260-1 495 (500-1)	
		1280-1 515 (600-1 1/2)	
		1520-2 755 (800-2 1/2)	

CENTERVILLE, TENNESSEE  
Orig 10DEC15

35° 50' N-87° 27' W

CENTERVILLE MUNI (GHM)  
RNAV (GPS) RWY 2

SE-1, 10 JUL 2025 to 07 AUG 2025

SE-1, 10 JUL 2025 to 07 AUG 2025

APP CRS	Rwy Ldg	<b>4002</b>
<b>021°</b>	TDZE	<b>765</b>
	Apt Elev	<b>765</b>

RNAV (GPS) RWY 2  
CENTERVILLE MUNI (GHM)

**T**  
**A** NA

Obtain local altimeter setting on CTAF, when not received, use Columbia/Mount Pleasant altimeter setting and increase all MDA 80 feet. Increase LNAV Cats C and D visibility  $\frac{3}{8}$  mile and Circling Cat D  $\frac{1}{4}$  mile. DME/DME RNP-0.3 NA. Procedure NA at night. Helicopter visibility reduction below 1 SM NA.

**MISSED APPROACH:**  
Climb to 3000 direct  
ZAVOS and hold.

NASHVILLE APP CON  
119.35 372.0

UNICOM  
22.8 (CTAF) 

MISSED APCH FIX

RW02  $\Delta 879 \pm$ 

(FAF)  
ZIDKI

(IF/IAF)  
WOGUT

30 NM to WOGUT

Diagram of a 30 NM to WOLUT (NoPT) sector. The sector is defined by a 111° heading and a 291° heading. A value of 3000 is indicated within the sector.

4 NM	VGSI and descent angles not coincident	3000	ZAVOS
Holding Pattern WOGUT	(VGSI Angle 4.00/TCH 43).	▲	▲

CATEGORY	A	B	C	D
LNAW > MDA	1140-1 375 (400-1)			
CIRCLING	1260-1	495 (500-1)	1280-1½ 515 (600-1½)	1520-2½ 755 (800-2½)

ELEV	765		TDZE	765
------	-----	--	------	-----

CENTERVILLE, TENNESSEE  
Orig 10DEC15

35° 50' N-87° 27' W

CENTERVILLE MUNI (GHM)  
RNAV (GPS) RWY 2

SE-1, 07 AUG 2025 to 04 SEP 2025