

CENTERVILLE, TENNESSEE

AL-5660 (FAA)

24193

WAAS CH 48838 W20A	APP CRS 201°	Rwy Idg TDZE Apt Elev	3763 765 765
--	------------------------	-----------------------------	---

RNAV (GPS) RWY 20

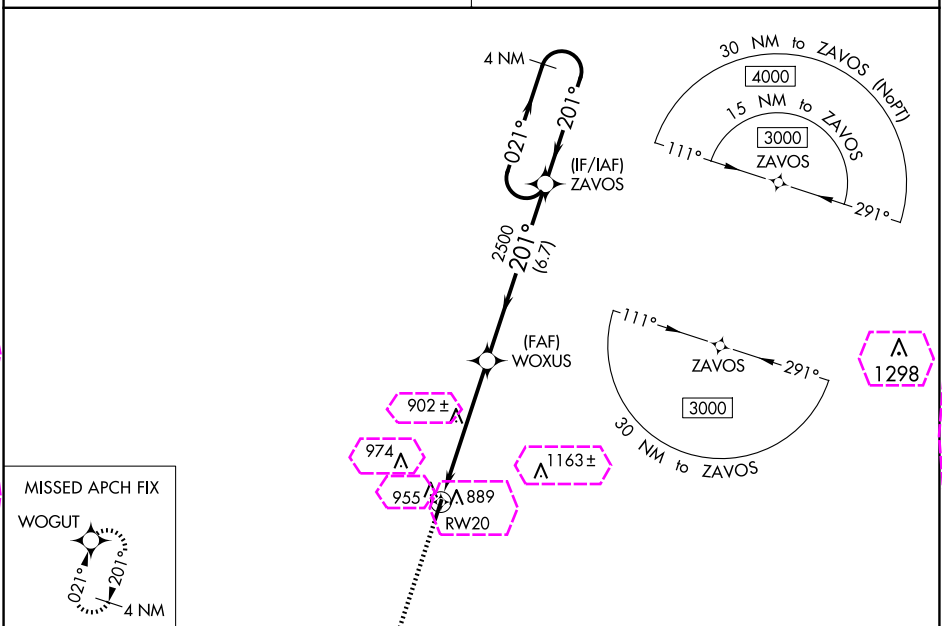
CENTERVILLE MUNI (GKM)

NA

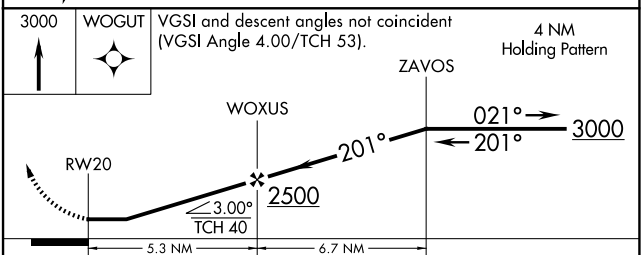
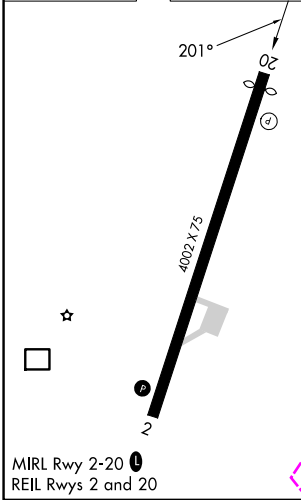
Obtain local altimeter setting on CTAF, when not received, use Columbia/Mount Pleasant altimeter setting and increase all MDA 80 feet. Increase LP Cats C and D visibility ¼ mile; LNAV Cats C and D ½ mile; Circling Cat D ¼ mile. DME/DME RNP-0.3 NA. Procedure NA at night. Helicopter visibility reduction below 1 SM NA.

MISSED APPROACH:
Climb to 3000 direct WOGUT and hold.

MEMPHIS CENTER 125.85 379.25	UNICOM 122.8 (CTAF)
---	--------------------------------------



ELEV 765	TDZE 765
-----------------	-----------------



CATEGORY	A	B	C	D
LP MDA	1160-1	395 (400-1)	1160-1½	395 (400-1½)
LNAV MDA	1220-1	455 (500-1)	1220-1¾	455 (500-1¾)
CIRCLING	1260-1	495 (500-1)	1280-1½ 515 (600-1½)	1520-2½ 755 (800-2½)

CENTERVILLE, TENNESSEE
Orig 10DEC15

35°50'N-87°27'W

RNAV (GPS) RWY 20

SE-1, 10 JUL 2025 to 07 AUG 2025

SE-1, 10 JUL 2025 to 07 AUG 2025

CENTERVILLE, TENNESSEE

AL-5660 (FAA)

25219

WAAS CH 48838 W20A	APP CRS 201°	Rwy Ldg TDZE 765 Apt Elev 765	3763 765 765
--	------------------------	---	---

RNAV (GPS) RWY 20

CENTERVILLE MUNI (GKM)

▼

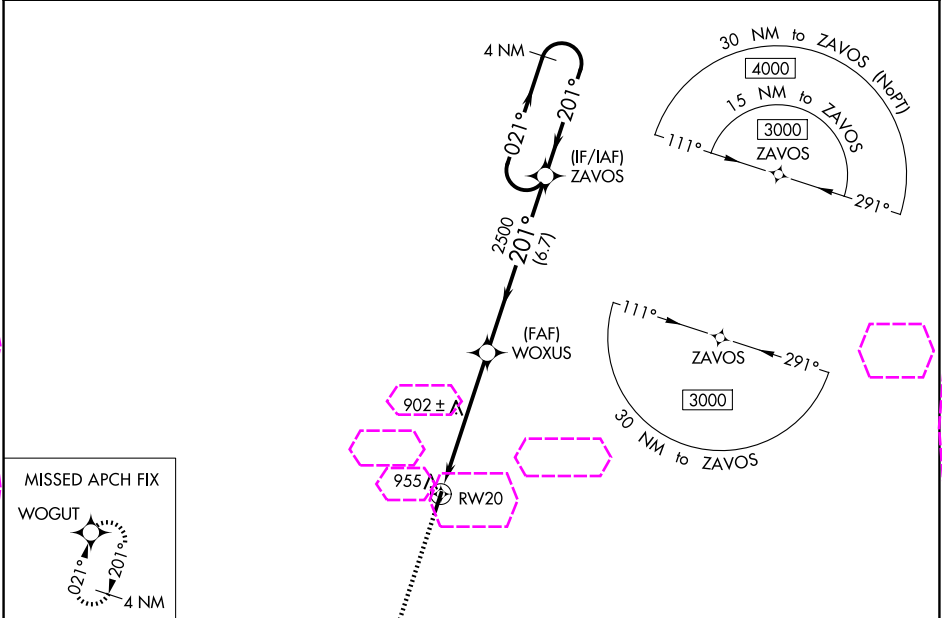
▲ NA

Obtain local altimeter setting on CTAF, when not received, use Columbia/Mount Pleasant altimeter setting and increase all MDA 80 feet. Increase LP Cats C and D visibility ¼ mile; LNAV Cats C and D ½ mile; Circling Cat D ¼ mile. DME/DME RNP-0.3 NA. Procedure NA at night. Helicopter visibility reduction below 1 SM NA.

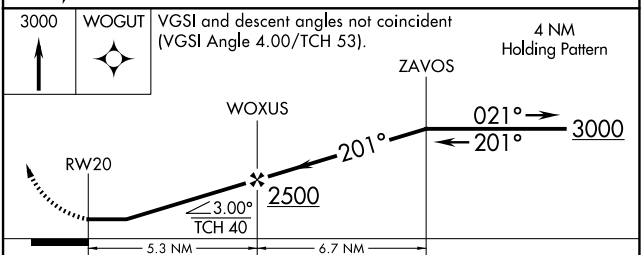
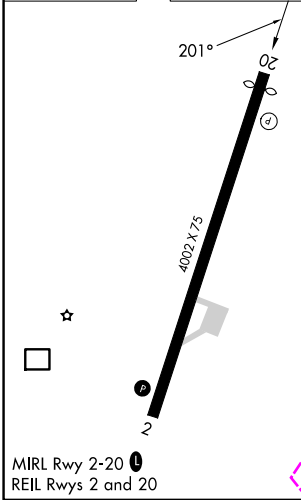
MISSED APPROACH:
Climb to 3000 direct WOGUT and hold.

NASHVILLE APP CON
119.35 372.0

UNICOM
122.8(CTAF) 0



ELEV 765	TDZE 765
----------	----------



CATEGORY	A	B	C	D
LP MDA	1160-1	395 (400-1)	1160-1½	395 (400-1½)
LNAV MDA	1220-1	455 (500-1)	1220-1¾	455 (500-1¾)
CIRCLING	1260-1	495 (500-1)	1280-1½ 515 (600-1½)	1520-2½ 755 (800-2½)

CENTERVILLE, TENNESSEE
Orig 10DEC15

35°50'N-87°27'W

CENTERVILLE MUNI (GKM)

RNAV (GPS) RWY 20

SE-1, 07 AUG 2025 to 04 SEP 2025

SE-1, 07 AUG 2025 to 04 SEP 2025