

PORTLAND, INDIANA

AL-5633 (FAA)

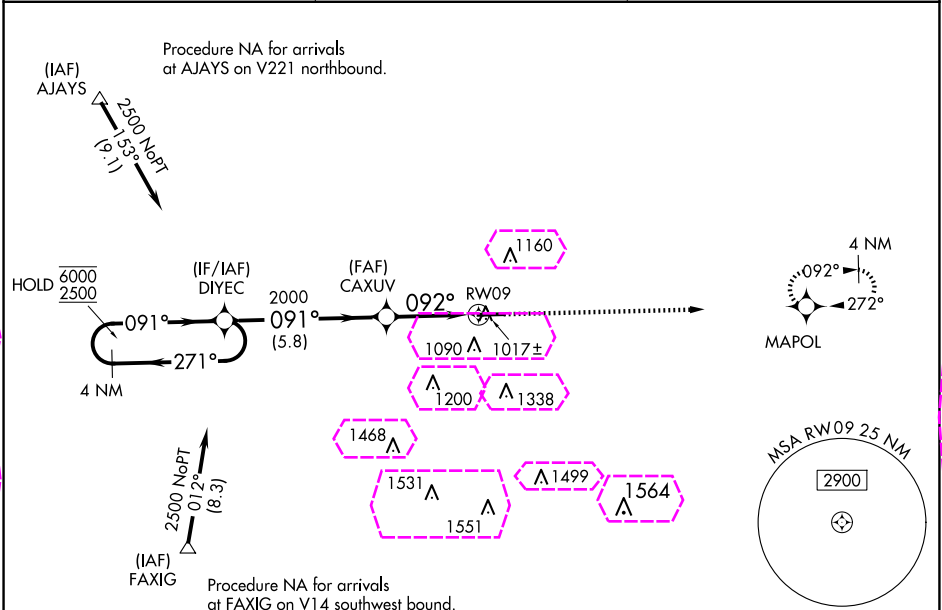
23166

WAAS CH 63225 W09A	APP CRS 092°	Rwy Idg 5505 TDZE 915 Apt Elev 925
--	------------------------	---

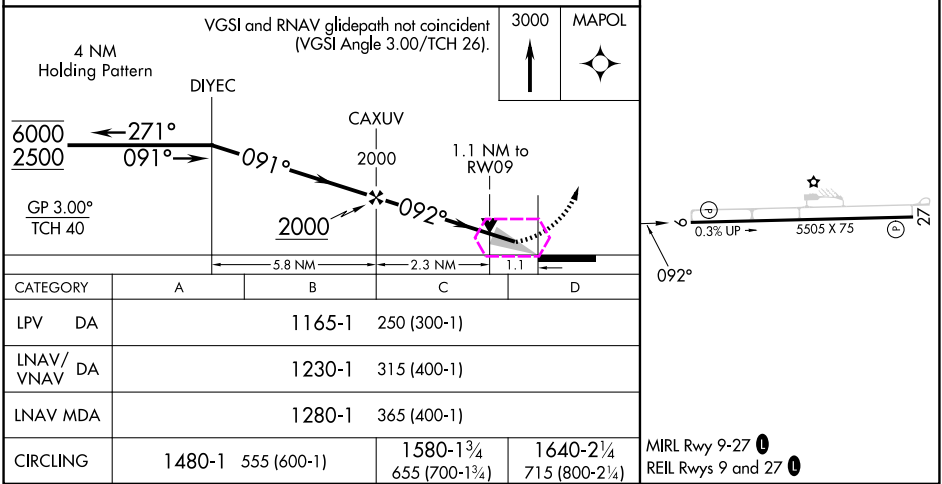
RNAV (GPS) RWY 9
PORTLAND MUNI (PLD)

RNP APCH - GPS.	MISSED APPROACH: Climb to 3000 direct MAPOL and hold.
Circling to Rwy 27 NA at night. For uncompensated Baro-VNAV systems, LNAV/VNAV NA below -16°C or above 54°C.	

AWOS-3 124.675	FORT WAYNE APP CON 132.15 (SE/NE) 284.6 127.2 (SW/NW) 284.6	UNICOM 122.8 (CTAF) 0
--------------------------	---	--



ELEV 925	TDZE 915
----------	----------



PORTLAND, INDIANA
Amdt 2A 20APR23

40°27'N-85°00'W

PORTLAND MUNI (PLD)
RNAV (GPS) RWY 9

EC-2, 10 JUL 2025 to 07 AUG 2025

EC-2, 10 JUL 2025 to 07 AUG 2025

RNP APCH - GPS.

WAAS
CH 63225
W09A

APP CRS
092°

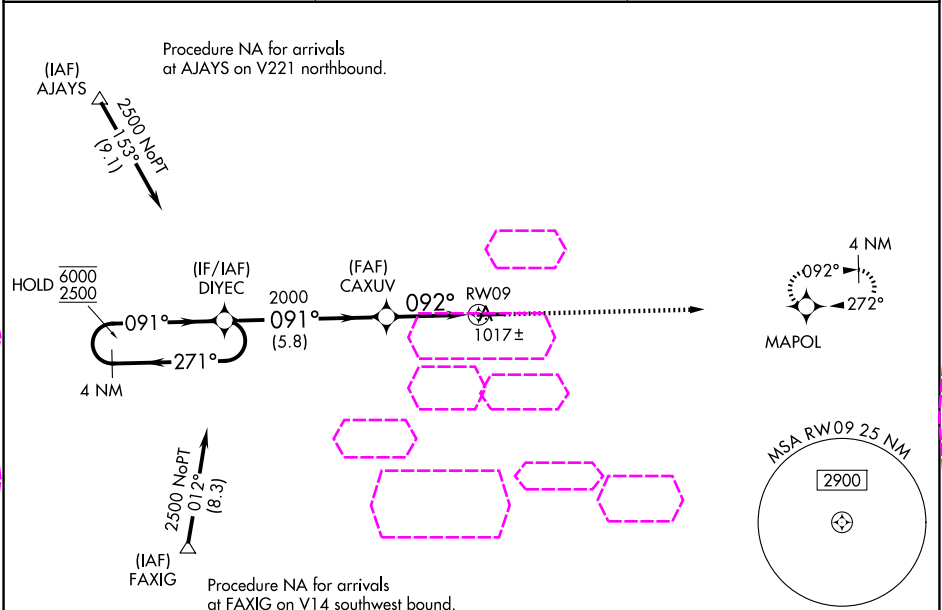
Rwy Ldg 5505
TDZE 915
Apt Elev 925

MISSED APPROACH:
Climb to 3000 direct
MAPOL and hold.

AWOS-3
124.675

FORT WAYNE APP CON
132.15 (SE/NE) 284.6
127.2 (SW/NW) 284.6

UNICOM
122.8 (CTAF) 0



ELEV 925

TDZE 915

4 NM Holding Pattern

VGSI and RNAV glidepath not coincident (VGSI Angle 3.00/TCH 26).

3000 MAPOL

DIYEC

CAXUV

GP 3.00° TCH 40

5.8 NM 2.3 NM 1.1 NM

091° 092°

1.1 NM to RW09

092°

0.3% UP 5505 X 75 270

CATEGORY	A	B	C	D
LPV DA		1165-1	250 (300-1)	
RNAV/VNAV DA		1230-1	315 (400-1)	
RNAV MDA		1280-1	365 (400-1)	
CIRCLING	1480-1 555 (600-1)		1580-1¾ 655 (700-1¾)	1640-2¼ 715 (800-2¼)

MIRL Rwy 9-27 0
REIL Rwy 9 and 27 0