

FORT MADISON, IOWA

AL-5625 (FAA)

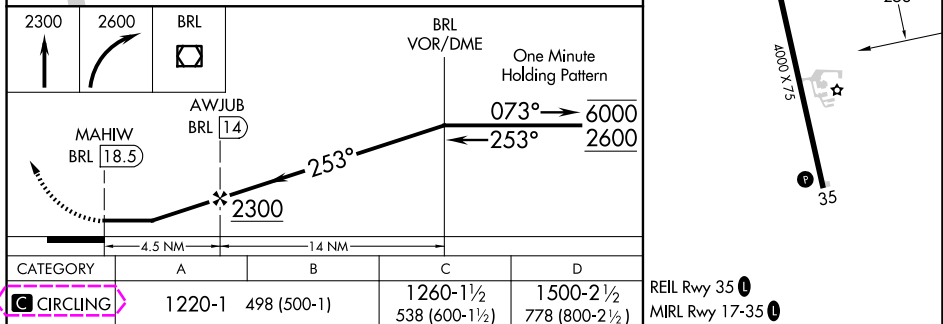
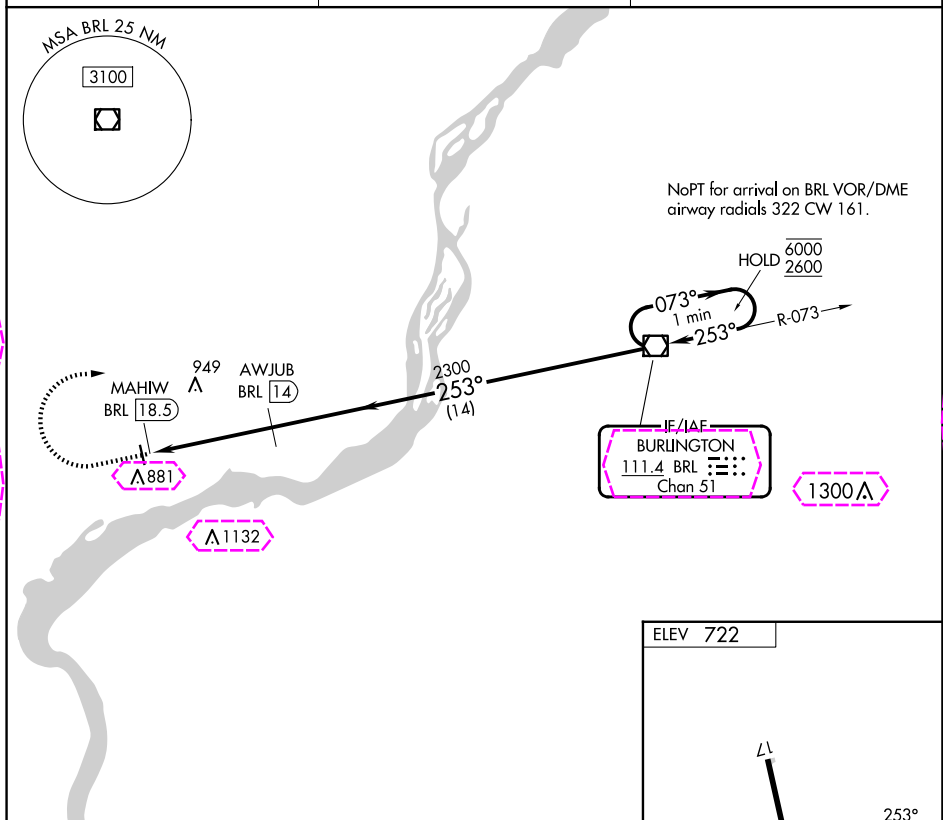
25163

VOR/DME BRL 111.4 Chan 51	APP CRS 253°	Rwy Ldg TDZE Apt Elev 722	N/A N/A 722
---	------------------------	---	--

VOR-A

FORT MADISON MUNI (F'SW)

DME required.	MISSED APPROACH: Climb to 2300 then climbing right turn to 2600 direct BRL VOR/DME and hold.
<p>▼ Visibility reduction by helicopters NA. When local altimeter not received, use BRL altimeter setting and increase all MDA's 40 feet and Circling visibility Cat D ¼ SM.</p>	

AWOS-3
120.925CHICAGO CENTER
135.6 316.1UNICOM
122.8 (CTAF) 0FORT MADISON, IOWA
Amdt 7C 12JUN25

40°40'N-91°20'W

FORT MADISON MUNI (F'SW)
VOR-A

NC-3, 10 JUL 2025 to 07 AUG 2025

NC-3, 10 JUL 2025 to 07 AUG 2025

FORT MADISON, IOWA

AL-5625 (FAA)

25219

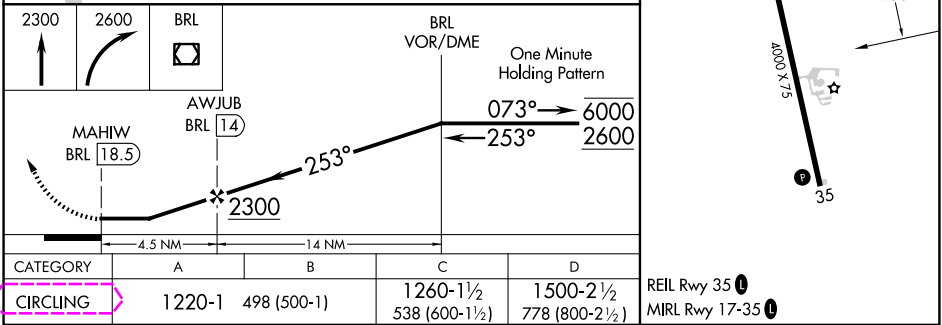
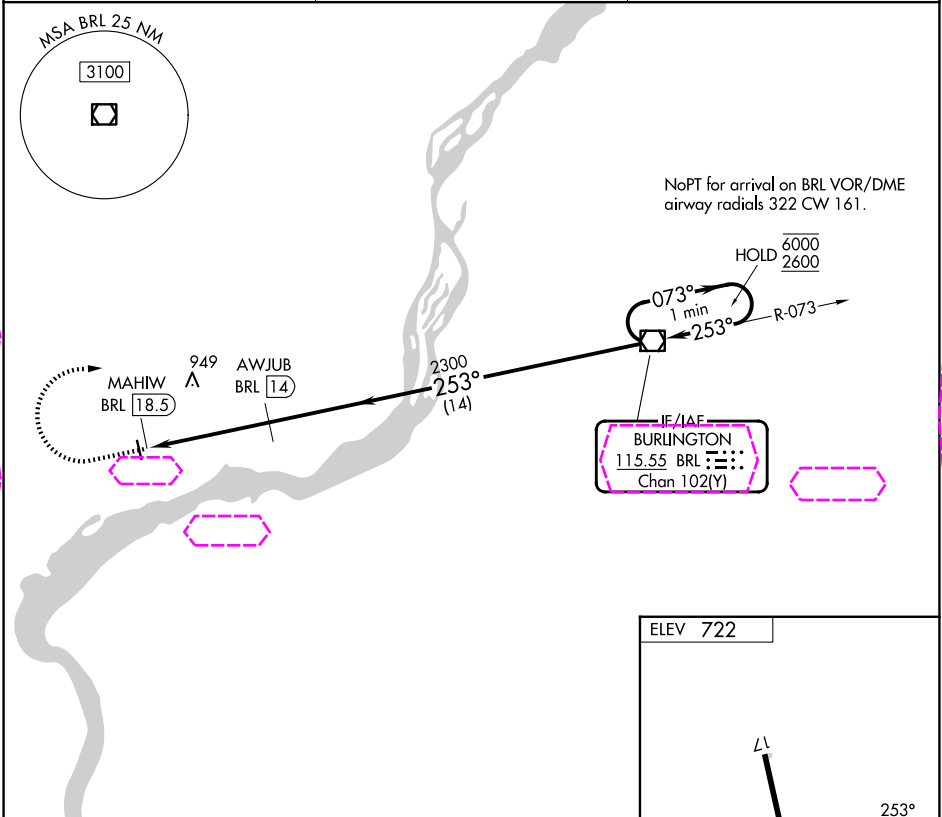
VOR/DME BRL 115.55 Chan 102(Y)	APP CRS 253°	Rwy Ldg TDZE Apt Elev 722	N/A N/A 722
--	------------------------	---	--------------------------

VOR-A

FORT MADISON MUNI (F'SW)

DME required.	MISSED APPROACH: Climb to 2300 then climbing right turn to 2600 direct BRL VOR/DME and hold.
---------------	--

AWOS-3 120.925	CHICAGO CENTER 135.6 316.1	UNICOM 122.8 (CTAF) 0
--------------------------	--------------------------------------	---------------------------------



CATEGORY	A	B	C	D	REIL Rwy 35 0 MIRL Rwy 17-35 0
CIRCLING	1220-1	498 (500-1)	1260-1½ 538 (600-1½)	1500-2½ 778 (800-2½)	

FORT MADISON, IOWA
Amdt 7C 12JUN25

40°40'N-91°20'W

FORT MADISON MUNI (F'SW)

VOR-A