

HOLLYWOOD, FLORIDA

AL-5606 (FAA)

25107

APP CRS	Rwy Idg	3180
269°	TDZE	9
	Apt Elev	9

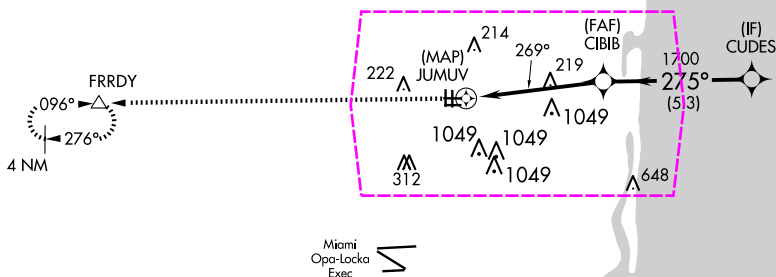
# **RNAV (GPS) RWY 28R** **NORTH PERRY (HWO)**

RNP APCH. RADAR required for procedure entry.

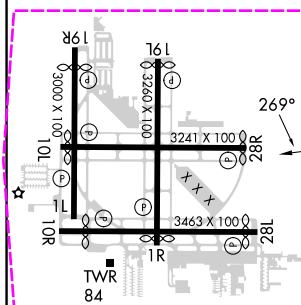
**▼** Rwy 28R helicopter visibility reduction below  $\frac{3}{4}$  SM NA. Straight-in minimums NA at night. Circling Rwy 1R, 10L, 19L, 28R NA at night. Circling NA for Cat C south of Rwy 10R-28L.

**MISSED APPROACH:**  
Climb to 2000 direct FRRDY and hold.

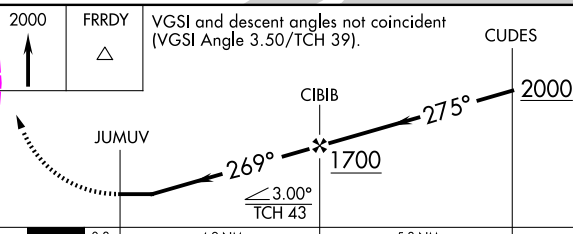
ATIS <b>135.475</b>	MIAMI APP CON <b>128.6 306.975</b>	<b>NORTH PERRY TOWER*</b> <b>132.1 (CTAF) 0 254.3</b>	GND CON <b>120.45 254.3</b>	UNICOM <b>122.95</b>
------------------------	---------------------------------------	--	--------------------------------	-------------------------

Miami  
Opa-Locka  
Exec

ELEV 9 D TDZE 9



REIL Rws 1L, 10R, 19R and 28L  
MRL Rws 10R-28L and 1L-19R



CATEGORY	A	B	C	D
LNAV MDA	520-1 511 (600-1)	520-1 $\frac{3}{8}$ 511 (600-1 $\frac{3}{8}$ )	520-1 $\frac{1}{2}$ 511 (600-1 $\frac{1}{2}$ )	NA
CIRCLING	560-1 551 (600-1)	560-1 $\frac{1}{2}$ 551 (600-1 $\frac{1}{2}$ )	560-1 $\frac{1}{2}$ 551 (600-1 $\frac{1}{2}$ )	NA

HOLLYWOOD, FLORIDA  
Orig-D 19MAY22

26°00'N-80°14'W

**NORTH PERRY (HWO)**  
**RNAV (GPS) RWY 28R**

SE-3, 10 JUL 2025 to 07 AUG 2025

HOLLYWOOD, FLORIDA

AL-5606 (FAA)

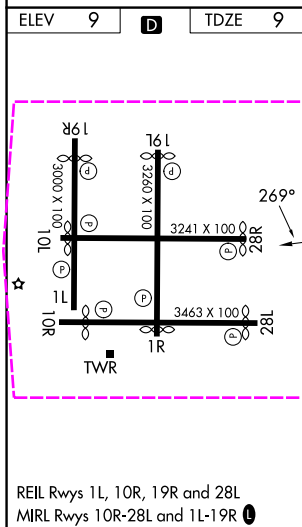
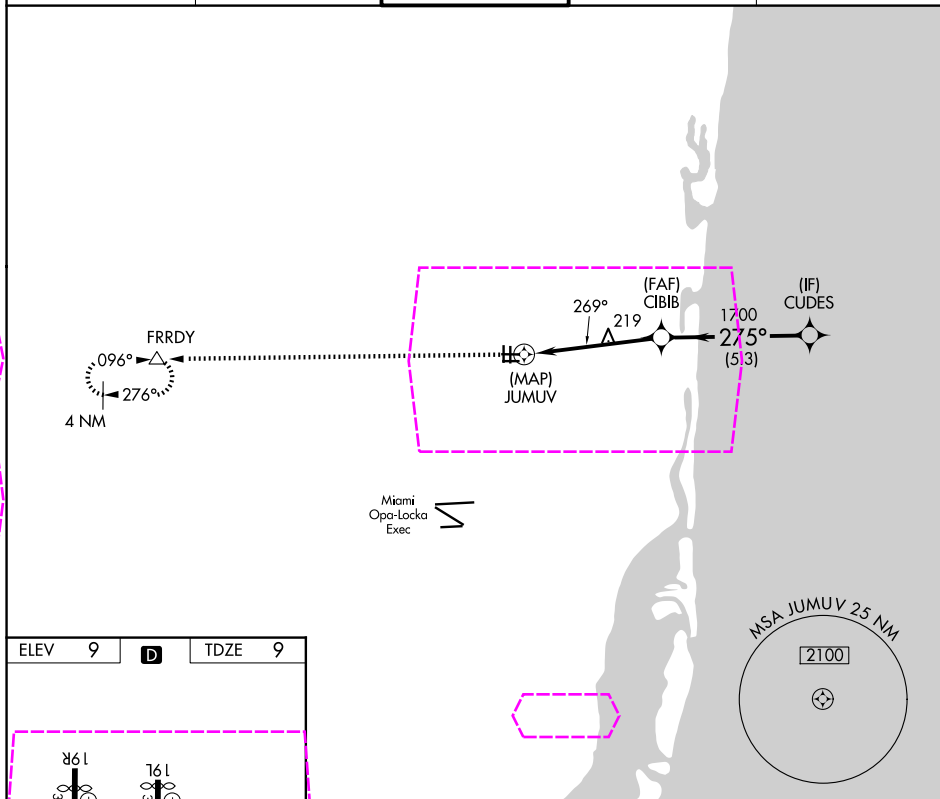
25219



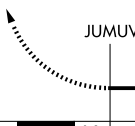
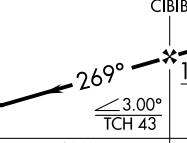
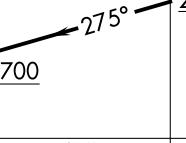
APP CRS	Rwy Ldg	3180
269°	TDZE	9
	Apt Elev	9

# **RNAV (GPS) RWY 28R** **NORTH PERRY (HWO)**

RNP APCH. RADAR required for procedure entry.	MISSED APPROACH: Climb to 2000 direct FRRDY and hold.
<p><b>▼</b> Rwy 28R helicopter visibility reduction below <math>\frac{3}{4}</math> SM NA. Straight-in minimums NA at night. Circling Rwy 1R, 10L, 19L, 28R NA at night. Circling NA for Cat C south of Rwy 10R-28L.</p>	

ATIS <b>135.475</b>	MIAMI APP CON <b>128.6 306.975</b>	NORTH PERRY TOWER* <b>132.1 (CTAF) 0 254.3</b>	GND CON <b>120.45 254.3</b>	UNICOM <b>122.95</b>
------------------------	---------------------------------------	---	--------------------------------	-------------------------



2000	FRRDY	VGSI and descent angles not coincident (VGSI Angle 3.50/TCH 39).		CUDES	
					
					
CATEGORY		A	B	C	D
LNAV MDA		520-1	511 (600-1)	520-1 $\frac{3}{8}$ 511 (600-1 $\frac{3}{8}$ )	NA
CIRCLING		560-1	551 (600-1)	560-1 $\frac{1}{2}$ 551 (600-1 $\frac{1}{2}$ )	NA

HOLLYWOOD, FLORIDA  
Orig-D 19MAY22

26°00'N-80°14'W

NORTH PERRY (HWO)  
**RNAV (GPS) RWY 28R**

SE-3, 07 AUG 2025 to 04 SEP 2025

SE-3, 07 AUG 2025 to 04 SEP 2025