

HOLLYWOOD, FLORIDA

AL-5606 (FAA)

25219

APP CRS	Rwy Ldg	2999
096°	TDZE	8
	Apt Elev	9

RNAV (GPS) RWY 10R

NORTH PERRY (HWO)

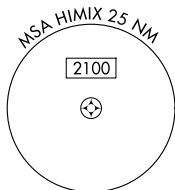
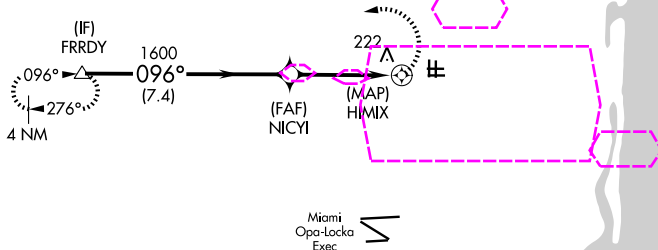
RNP APCH.

▼ Rwy 10R helicopter visibility reduction below $\frac{3}{4}$ SM NA.
Circling Rwy 1R, 10L, 19L, 28R NA at night.
Circling NA for Cat C south of Rwy 10R-28L.

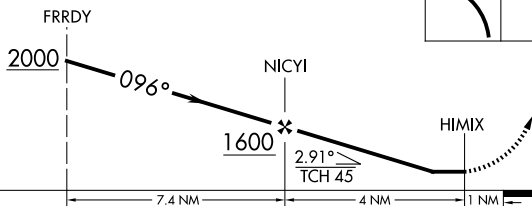
MISSED APPROACH: Climbing left turn to 2000 direct FRRDY and hold.

ATIS 135.475	MIAMI APP CON 128.6 306.975	NORTH PERRY TOWER* 132.1 (CTAF) 254.3	GND CON 120.45 254.3	UNICOM 122.95
------------------------	---------------------------------------	---	--------------------------------	-------------------------

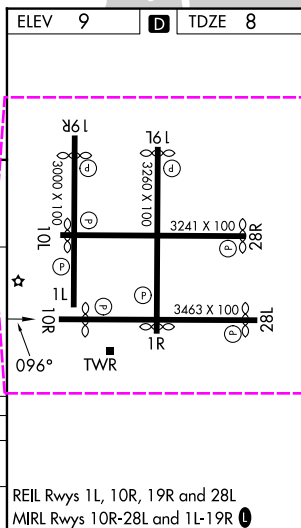
Procedure NA for arrivals at FRRDY
on V157-511-599 northwest bound.



VGSI and descent angles not coincident
(VGSI Angle 3.50/TCH 45).



CATEGORY	A	B	C	D
LNAV MDA	480-1 $\frac{1}{4}$	472 (500-1 $\frac{1}{4}$)	480-1 $\frac{3}{8}$ 472 (500-1 $\frac{3}{8}$)	NA
CIRCLING	560-1 $\frac{1}{4}$	551 (600-1 $\frac{1}{4}$)	560-1 $\frac{1}{2}$ 551 (600-1 $\frac{1}{2}$)	NA



HOLLYWOOD, FLORIDA
Orig-D 19MAY22

26°00'N-80°14'W

NORTH PERRY (HWO)
RNAV (GPS) RWY 10R

SE-3, 07 AUG 2025 to 04 SEP 2025

SE-3, 07 AUG 2025 to 04 SEP 2025