

CHINO, CALIFORNIA

AL-5599 (FAA)

24361

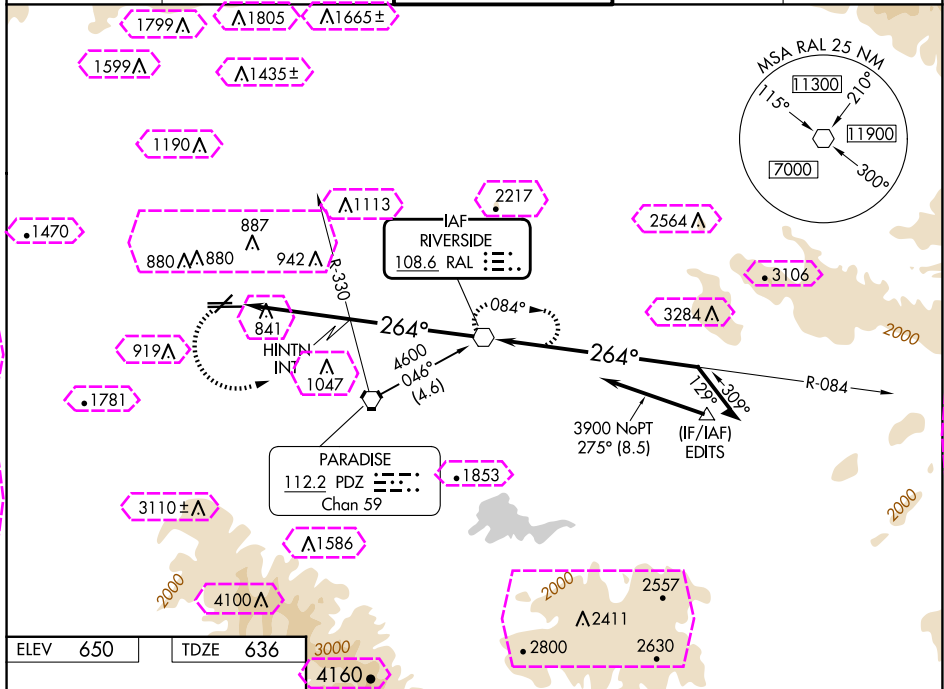
VOR RAL	APP CRS	Rwy Idg	4858
108.6	264°	TDZE	636
		App Elev	650

VOR RWY 26R

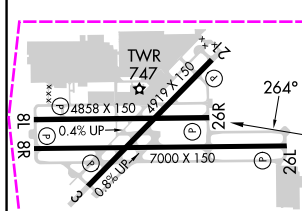
CHINO (CNO)

<p>▼ NA</p> <p>Rwy 26R helicopter visibility reduction below ¾ SM NA. When local altimeter setting not received, use Ontario altimeter setting and increase all MDAs 60 feet; increase HINTN fix minimums visibility S-26R and Circling Cat B, C, and D ¼ SM.</p>	<p>MISSED APPROACH: Climbing left turn to 4500 direct RAL VOR and hold, continue climb-in-hold to 4500.</p>
---	---

ATIS 125.85	SOCAL APP CON 135.4 377.125	CHINO TOWER ★ 118.5 (CTAF)	GND CON 121.6	UNICOM 122.95
----------------	--------------------------------	-------------------------------	------------------	------------------

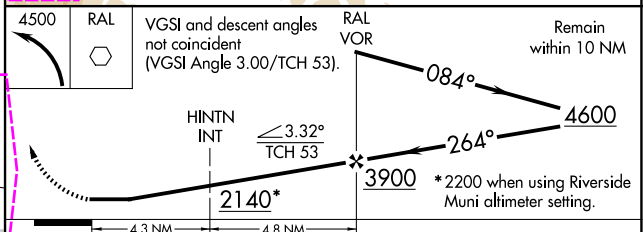


ELEV 650	TDZE 636
----------	----------



REIL Rwys 3 and 21
MIRL Rwys 3-21 and 8R-26L
HIRL Rwy 8L-26R

FAF to MAP 9.1 NM					
Knots	60	90	120	150	180
Min:Sec	9:06	6:04	4:33	3:38	3:02



CATEGORY	A	B	C	D
S-26R	2140-1¼ 1504 (1500-1¼)	2140-1½ 1504 (1500-1½)	2140-3	1504 (1500-3)
CIRCLING	2140-1¼ 1490 (1500-1¼)	2140-1½ 1490 (1500-1½)	2140-3	1490 (1500-3)
HINTN FIX MINIMUMS				
S-26R	1320-1	684 (700-1)	1320-2 684 (700-2)	1320-2¼ 684 (700-2¼)
CIRCLING	1320-1	670 (700-1)	1320-2 670 (700-2)	1340-2¼ 690 (700-2¼)

CHINO, CALIFORNIA

Orig-A 07OCT21

33°58'N-117°38'W

CHINO (CNO)

VOR RWY 26R

CHINO, CALIFORNIA

AL-5599 (FAA)

25219

VOR RAL	APP CRS	Rwy Ldg	4858
108.6	264°	TDZE	636
		App Elev	650

VOR RWY 26R

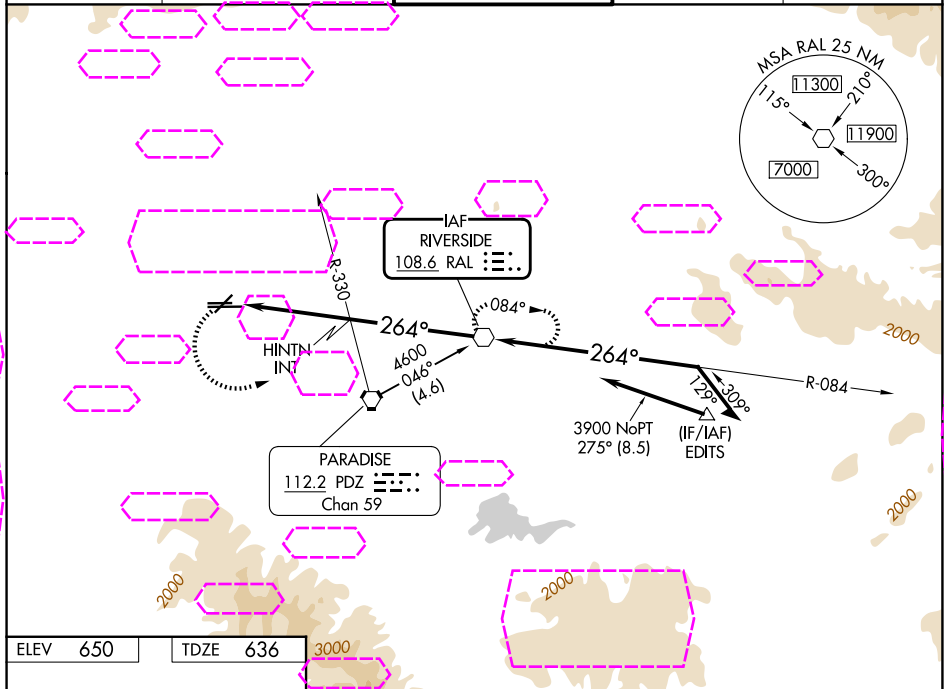
CHINO (CNO)

NA

Rwy 26R helicopter visibility reduction below ¾ SM NA.
When local altimeter setting not received, use Ontario altimeter setting and increase all MDAs 60 feet; increase HINTN fix minimums visibility 5-26R and Circling Cat B, C, and D ¼ SM.

MISSED APPROACH: Climbing left turn to 4500 direct RAL VOR and hold, continue climb-in-hold to 4500.

D-ATIS 125.85	SOCAL APP CON 135.4 377.125	CHINO TOWER ★ 118.5 (CTAF)	GND CON 121.6	UNICOM 122.95
------------------	--------------------------------	-------------------------------	------------------	------------------



ELEV 650 TDZE 636

REIL Rwy 3 and 21
MIRL Rwy 3-21 and 8R-26L
HIRL Rwy 8L-26R

FAF to MAP 9.1 NM

Knots	60	90	120	150	180
Min:Sec	9:06	6:04	4:33	3:38	3:02

VGSi and descent angles not coincident (VGSi Angle 3.00/TCH 53).				
Remain within 10 NM				
HINTN INT				
TCH 53				
HINTN FIX MINIMUMS				
CATEGORY	A	B	C	D
S-26R	2140-1¼ 1504 (1500-1¼)	2140-1½ 1504 (1500-1½)	2140-3	1504 (1500-3)
CIRCLING	2140-1¼ 1490 (1500-1¼)	2140-1½ 1490 (1500-1½)	2140-3	1490 (1500-3)
S-26R	1320-1	684 (700-1)	1320-2 684 (700-2)	1320-2¼ 684 (700-2¼)
CIRCLING	1320-1	670 (700-1)	1320-2 670 (700-2)	1340-2¼ 690 (700-2¼)

CHINO, CALIFORNIA
Orig-A 07OCT21

33°58'N-117°38'W

CHINO (CNO) VOR RWY 26R

SW-3, 07 AUG 2025 to 04 SEP 2025

SW-3, 07 AUG 2025 to 04 SEP 2025