

CHINO, CALIFORNIA

AL-5599 (FAA)

24361

WAAS CH <b>97320</b> <b>W26A</b>	APP CRS <b>255°</b>	Rwy Idg TDZE Apt Elev	<b>4858</b> <b>636</b> <b>650</b>
--	------------------------	-----------------------------	---

# RNAV (GPS) RWY 26R

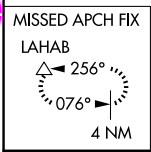
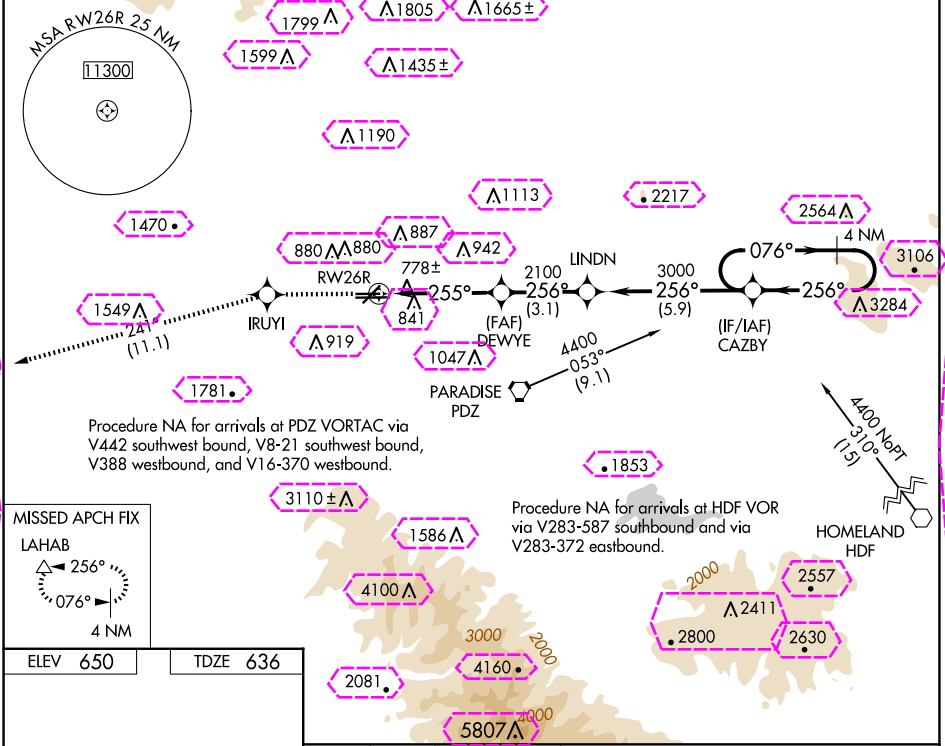
CHINO (CNO)

RNP APCH-GPS.

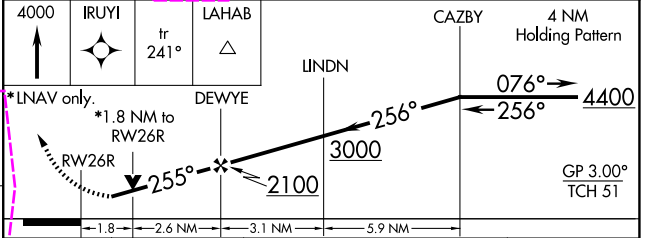
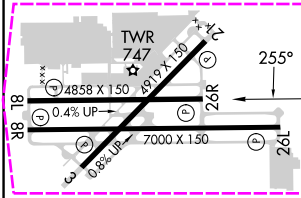
For uncompensated Baro-VNAV systems, LNAV/VNAV NA below -16°C or above 54°C. Helicopter visibility reduction below ¾ SM NA.

MISSED APPROACH: Climb to 4000 direct IRUYI and via 241° track to LAHAB and hold.

ATIS <b>125.85</b>	SOCAL APP CON <b>135.4 377.125</b>	CHINO TOWER* <b>118.5 (CTAF)</b>	GND CON <b>121.6</b>	UNICOM <b>122.95</b>
-----------------------	---------------------------------------	-------------------------------------	-------------------------	-------------------------



ELEV 650	TDZE 636
----------	----------



CATEGORY	A	B	C	D
LPV DA	1030-1¼ 394 (400-1¼)			
LNAV/VNAV DA	1177-2 541 (600-2)			
LNAV MDA	1260-1	624 (700-1)	1260-1¾ 624 (700-1¾)	1260-2 624 (700-2)
CIRCLING	1260-1¾ 610 (700-1¾)			1340-2¼ 690 (700-2¼)

REIL Rwy 3 and 21  
MIRL Rwy 3-21 and 8R-26L  
HIRL Rwy 8L-26R

CHINO, CALIFORNIA

Orig-E 07OCT21

33°58'N-117°38'W

CHINO (CNO)

# RNAV (GPS) RWY 26R

CHINO, CALIFORNIA

AL-5599 (FAA)

25219

WAAS CH <b>97320</b> <b>W26A</b>	APP CRS <b>255°</b>	Rwy Ldg TDZE Apt Elev	<b>4858</b> <b>636</b> <b>650</b>
--	------------------------	-----------------------------	---

# RNAV (GPS) RWY 26R

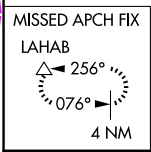
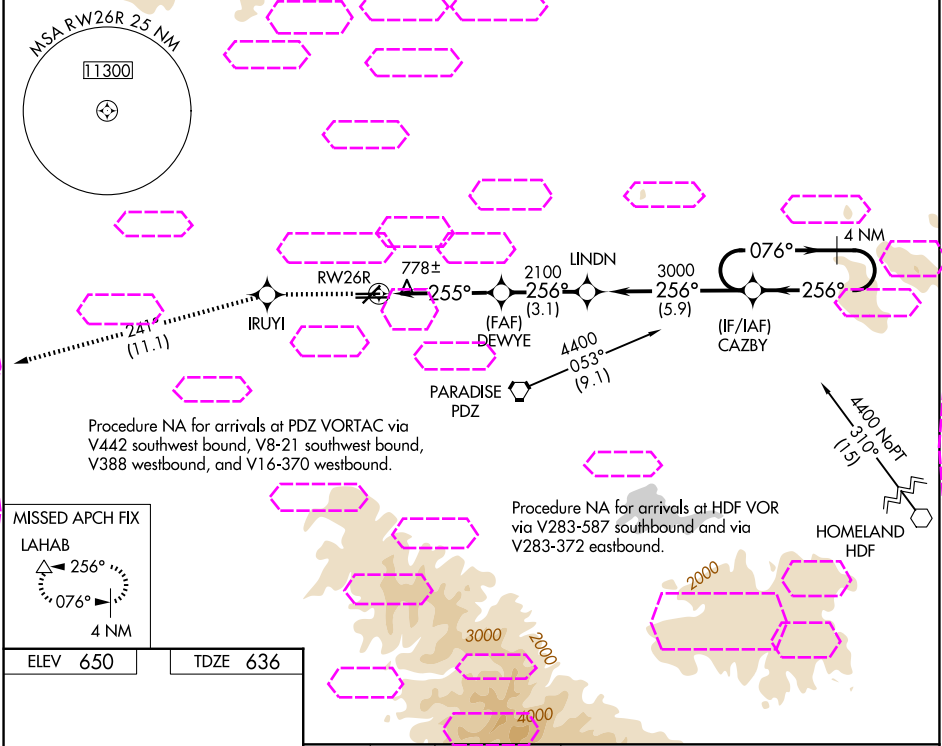
CHINO (CNO)

RNP APCH-GPS.

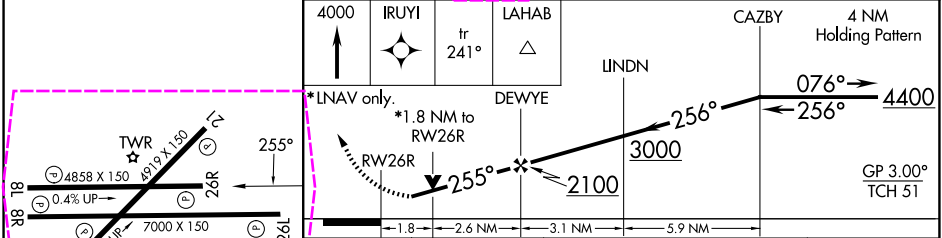
For uncompensated Baro-VNAV systems, LNAV/VNAV NA below -16°C or above 54°C. Helicopter visibility reduction below ¾ SM NA.

MISSED APPROACH: Climb to 4000 direct IRUYI and via 241° track to LAHAB and hold.

D-ATIS <b>125.85</b>	SOCAL APP CON <b>135.4 377.125</b>	CHINO TOWER ★ <b>118.5 (CTAF)</b>	GND CON <b>121.6</b>	UNICOM <b>122.95</b>
-------------------------	---------------------------------------	--------------------------------------	-------------------------	-------------------------



ELEV 650	TDZE 636
----------	----------



CATEGORY	A	B	C	D
LPV DA	1030-1¼ 394 (400-1¼)			
LNAV/VNAV DA	1177-2 541 (600-2)			
LNAV MDA	1260-1 624 (700-1)	1260-1¾ 624 (700-1¾)	1260-2 624 (700-2)	
CIRCLING	1260-1¾ 610 (700-1¾)		1340-2¼ 690 (700-2¼)	