

CHINO, CALIFORNIA

AL-5599 (FAA)

24361

LOC I-CNO 111.5	APP CRS 255°	Rwy Idg 4858 TDZE 636 Apt Elev 650
---------------------------	------------------------	---

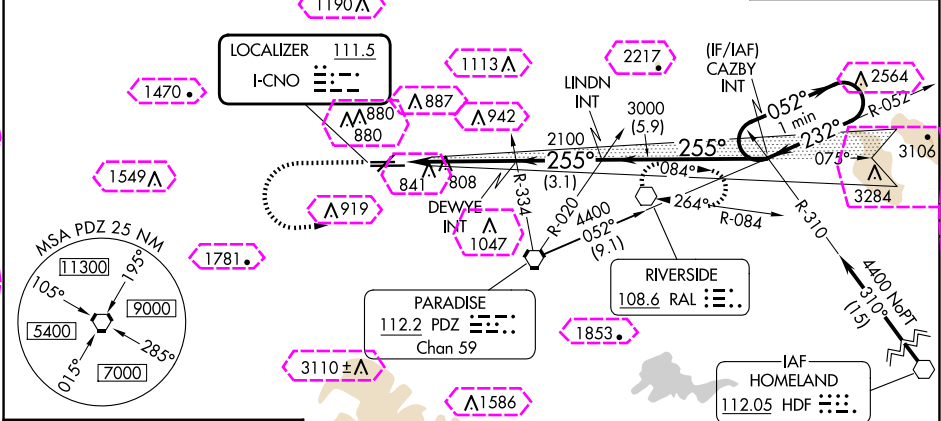
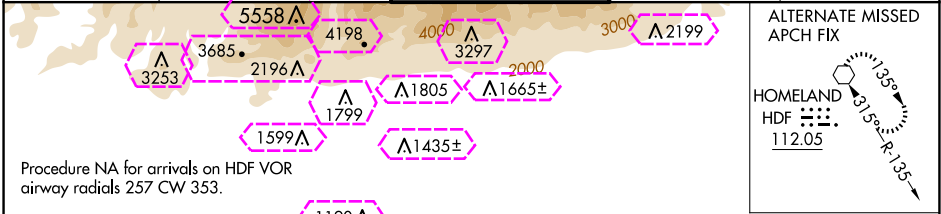
ILS or LOC RWY 26R

CHINO (CNO)

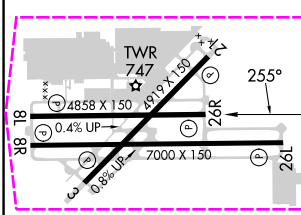
▼ Helicopter visibility reduction below $\frac{3}{4}$ SM NA.
▲ When local altimeter setting not received, use Ontario altimeter setting and increase DA to 940 feet and all visibilities $\frac{1}{4}$ SM; increase all MDAs 60 feet and visibility S-LOC 26R and Circling Cat C and D $\frac{1}{4}$ SM.

MISSED APPROACH: Climb to 1100 then climbing left turn to 4500 direct RAL VOR and hold, continue climb-in-hold to 4500.

ATS 125.85	SOCAL APP CON 135.4 377.125	CHINO TOWER ★ 118.5 (CTAF)	GND CON 121.6	UNICOM 122.95
----------------------	---------------------------------------	--------------------------------------	-------------------------	-------------------------



ELEV 650	TDZE 636
----------	----------



REIL Rlys 3 and 21 MIRL Rlys 3-21 and 8R-26L HIRL Rwy 8L-26R	FAF to MAP 4.4 NM	1100	4500	RAL	DEWEYE INT	LINDN INT	CAZBY INT	One Minute Holding Pattern	GS 3.00° TCH 51
		4.4 NM	3.1 NM	5.9 NM					
		CATEGORY	A	B	C	D			
		S-ILS 26R		886- $\frac{3}{4}$	250 (300- $\frac{3}{4}$)				
		S-LOC 26R	1060-1	424 (500-1)	1060-1 $\frac{1}{4}$	424 (500-1 $\frac{1}{4}$)			
		CIRCLING	1180-1 530 (600-1)	1200-1 550 (600-1)	1240-1 $\frac{1}{2}$ 590 (600-1 $\frac{1}{2}$)	1340-2 $\frac{1}{4}$ 690 (700-2 $\frac{1}{4}$)			

CHINO, CALIFORNIA
Amdt 8B 07OCT21

33°58'N-117°38'W

ILS or LOC RWY 26R

CHINO (CNO)

SW-3, 10 JUL 2025 to 07 AUG 2025

SW-3, 10 JUL 2025 to 07 AUG 2025

LOC I-CNO <u>111.5</u>	APP CRS 255°	Rwy Ldg TDZE Apt Elev	4858 636 650
----------------------------------	------------------------	-----------------------------	---

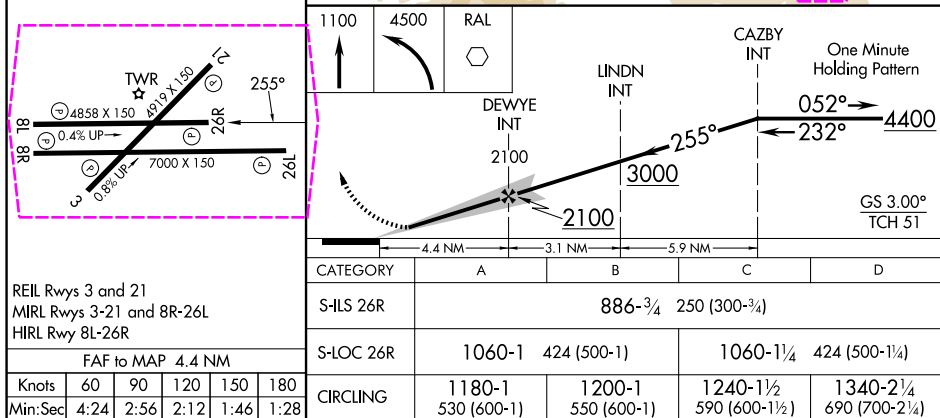
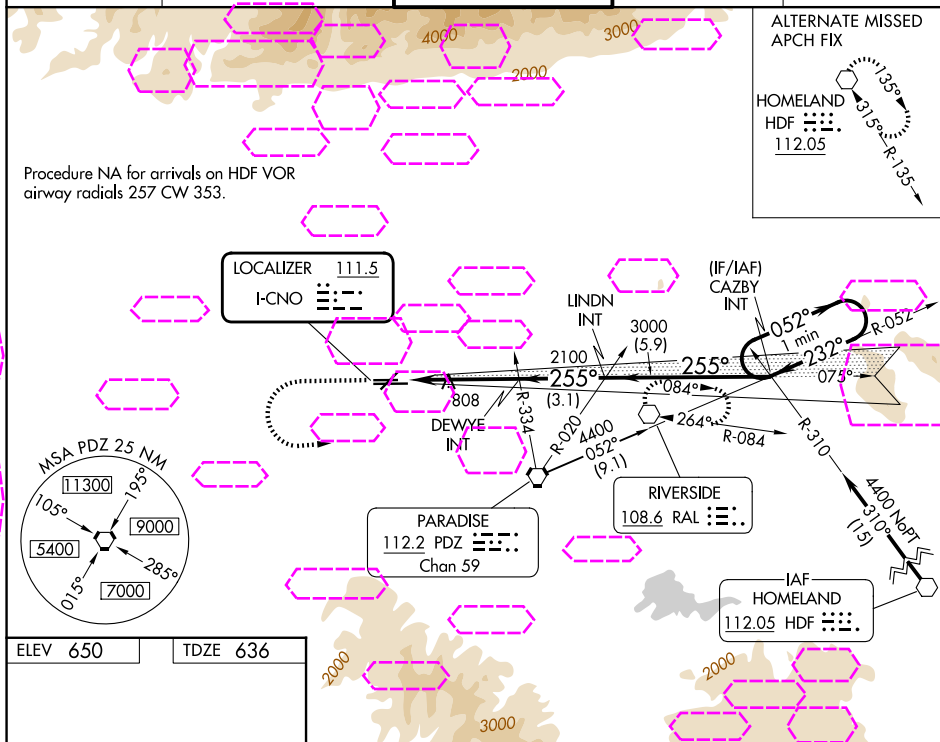
ILS or LOC RWY 26R

CHINO (CNO)

- T** Helicopter visibility reduction below $\frac{3}{4}$ SM NA.
A When local altimeter setting not received, use Ontario altimeter setting and increase DA to 940 feet and all visibilities $\frac{1}{4}$ SM; increase all MDAs 60 feet and visibility S-LOC 26R and Circling Cat C and D $\frac{1}{4}$ SM.

MISSED APPROACH: Climb to 1100 then climbing left turn to 4500 direct RAL VOR and hold, continue climb-in-hold to 4500.

D-ATIS 125.85	SOCAL APP CON 135.4 377.125	CHINO TOWER ★ 118,5 (CTAF)	GND CON 121.6	UNICOM 122.95
-------------------------	---------------------------------------	--------------------------------------	-------------------------	-------------------------



CHINO, CALIFORNIA

Amdt 8B 07OCT21

33°58'N-117°38'W

CHINO (CNO)

ILS or LOC RWY 26R

SW-3, 07 AUG 2025 to 04 SEP 2025

SW-3, 07 AUG 2025 to 04 SEP 2025