

JACKSONVILLE, FLORIDA

AL-5570 (FAA)

23222

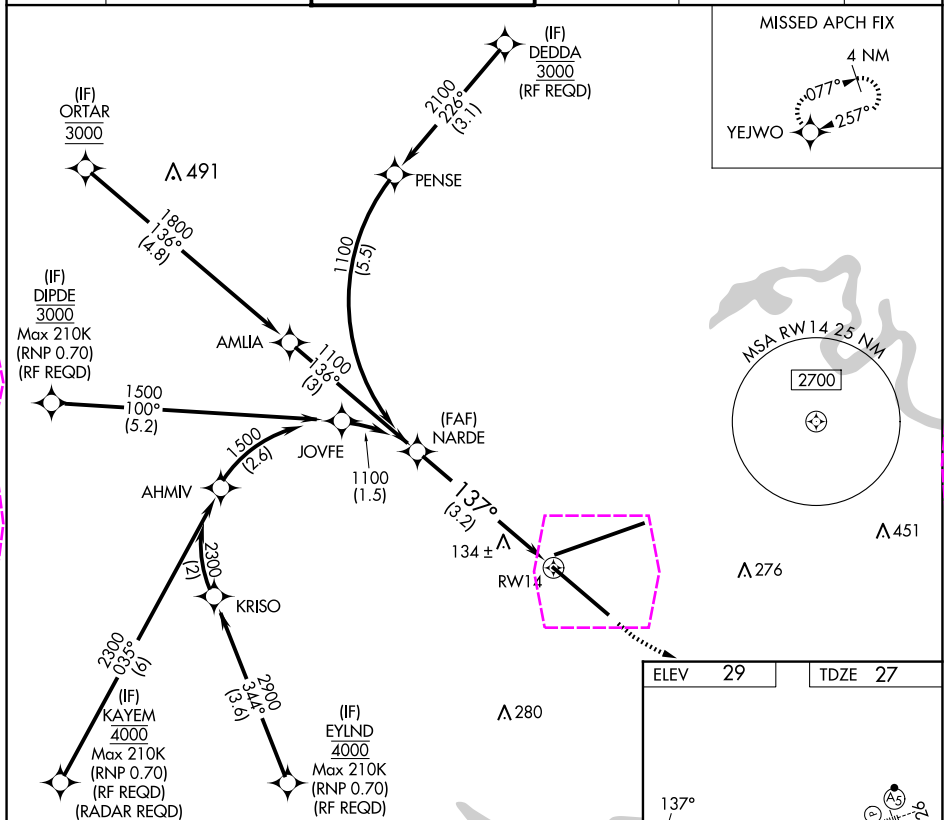
APP CRS	Rwy Idg	7701
137°	TDZE	27
	Apt Elev	29

RNAV (RNP) Y RWY 14

JACKSONVILLE INTL (JAX)

▼ For uncompensated Baro-VNAV systems, procedure NA below -5°C (23°F) or above 54°C (130°F). GPS required. For inoperative MALSR, increase RNP 0.30 all Cats visibility to 1½ mile.	MALSR A5	MISSED APPROACH: Climb to 500 then climbing left turn to 2000 direct YEJWO and hold.
--	-------------	--

D-ATIS 125.85	JACKSONVILLE APP CON 119.0 269.9	JACKSONVILLE TOWER 118.3 317.7	GND CON 121.9 348.6	CLNC DEL 119.5 290.275	CPDLC
------------------	-------------------------------------	-----------------------------------	------------------------	---------------------------	-------



VGSi and RNAV glidepath not coincident (VGSi Angle 3.00/TCH 70).					500	2000	YEJWO
NARDE					1100		
GP 3.00° TCH 54					1100	137°	RW14
See planview for multiple IF locations.							
3.2 NM							
CATEGORY	A	B	C	D			
RNP 0.30 DA	389-1		362 (400-1)				
AUTHORIZATION REQUIRED							
REIL Rwy 32 TDZ/CL Rwys 8, 14, and 26 HIRL Rwys 8-26 and 14-32							

JACKSONVILLE, FLORIDA

Orig-B 30APR15

30°30'N-81°41'W

JACKSONVILLE INTL (JAX)

RNAV (RNP) Y RWY 14

APP CRS	Rwy Ldg	7701
137°	TDZE	27
	Apt Elev	29

RNAV (RNP) Y RWY 14
JACKSONVILLE INTL (JAX)

T For uncompensated Baro-VNAV systems, procedure NA below -5°C (23°F) or above 54°C (130°F). GPS required. For inoperative MALSR, increase RNP 0.30 all Cats visibility to 1½ mile.

MALSR

MISSED APPROACH: Climb to 500 then climbing left turn to 2000 direct YELWO and hold

D-ATIS
125.85

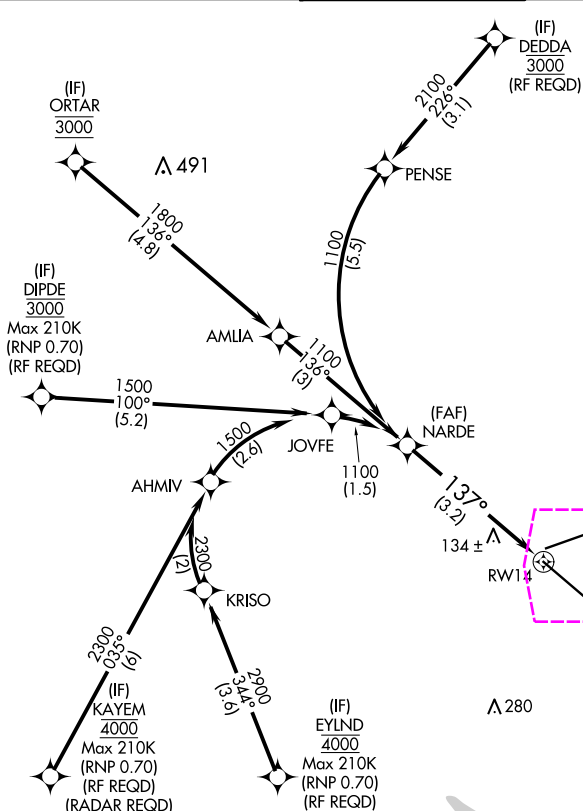
JACKSONVILLE APP CON
119.0 269.9

JACKSONVILLE TOWER
118.3 317.7

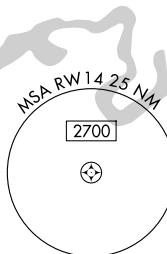
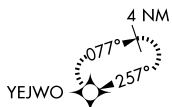
GND CON
121.9 348.6

CLNC DEL
119.5 290.275

CPD/C



MISSED APCH FIX



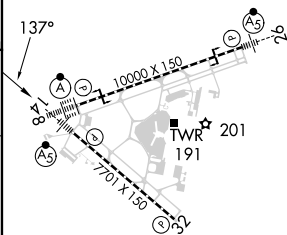
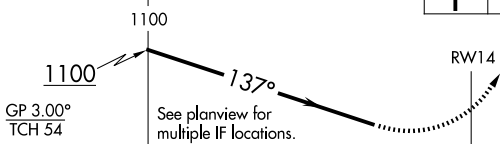
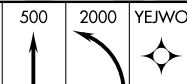
A 276

A 451

ELEV	29		TDZE	27
------	----	--	------	----

TDZE 27

VGSI and RNAV glidepath not coincident
(VGSI Angle 3.00/TCH 70).



CATEGORY

A

B

C

D

RNP 0.30 DA

389-1 362 (400-1)

AUTHORIZATION REQUIRED

REIL Rwy 32
TDZ/CL Rwy 8, 14, and 26
HIRL Rwy 8-26 and 14-32