

WAAS CH 86324 W01A	APP CRS 007°	Rwy Idg TDZE Apt Elev	5001 489 489
--	------------------------	-----------------------------	---

RNAV (GPS) RWY 1
SULPHUR SPRINGS MUNI (SLR)

RNP APCH-GPS.

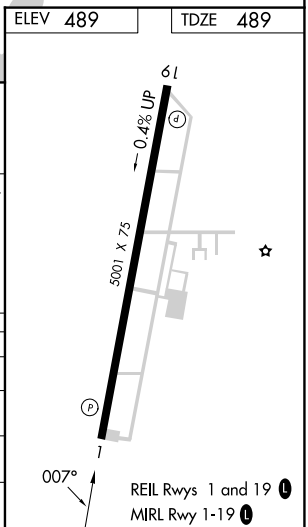
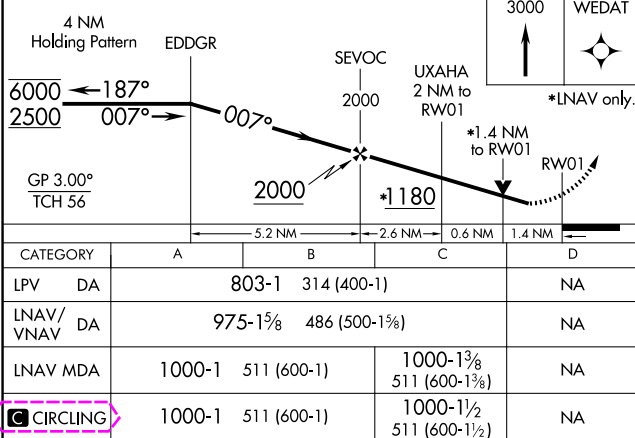
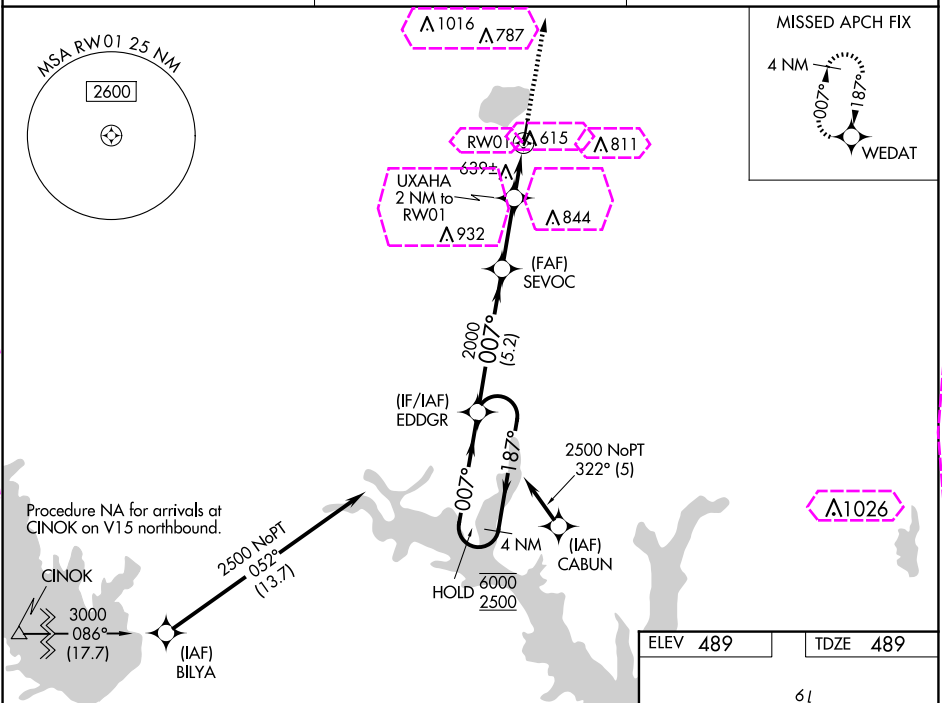
- T** Circling NA east of Rwy 1-19. Rwy 1 helicopter visibility reduction below $\frac{3}{4}$ SM NA.
A For uncompensated Baro-VNAV systems, LNAV/VNAV NA below -15°C or above 54°C.

MISSED APPROACH: Climb to 3000 direct WEDAT and hold.

AWOS-3
118.35

FORT WORTH CENTER
132.025 360.75

UNICOM
123.075 (CTAF) **L**



SULPHUR SPRINGS, TEXAS
Amdt 1E 03NOV22

33°10'N-95°37'W

SULPHUR SPRINGS MUNI (SLR)
RNAV (GPS) RWY 1

SC-2, 10 JUL 2025 to 07 AUG 2025

SC-2, 10 JUL 2025 to 07 AUG 2025

WAAS CH 86324 W01A	APP CRS 007°	Rwy Ldg TDZE Apt Elev	5001 489 489
--	------------------------	-----------------------------	---

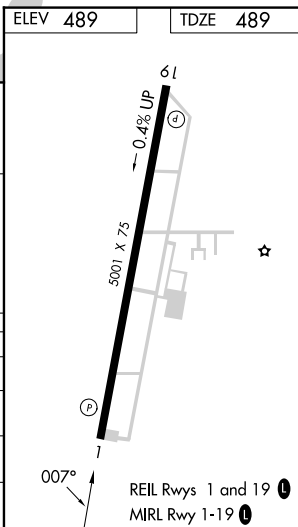
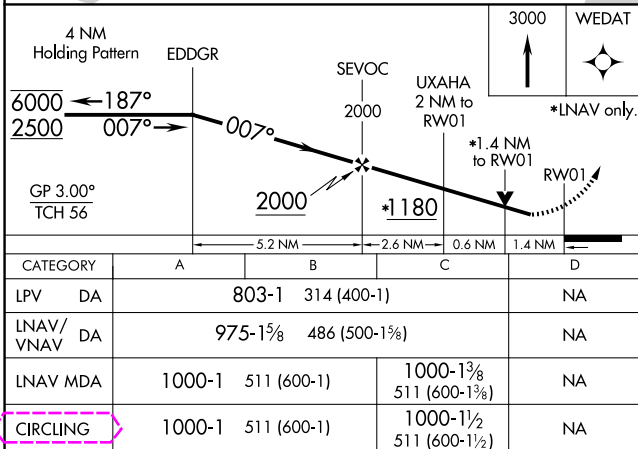
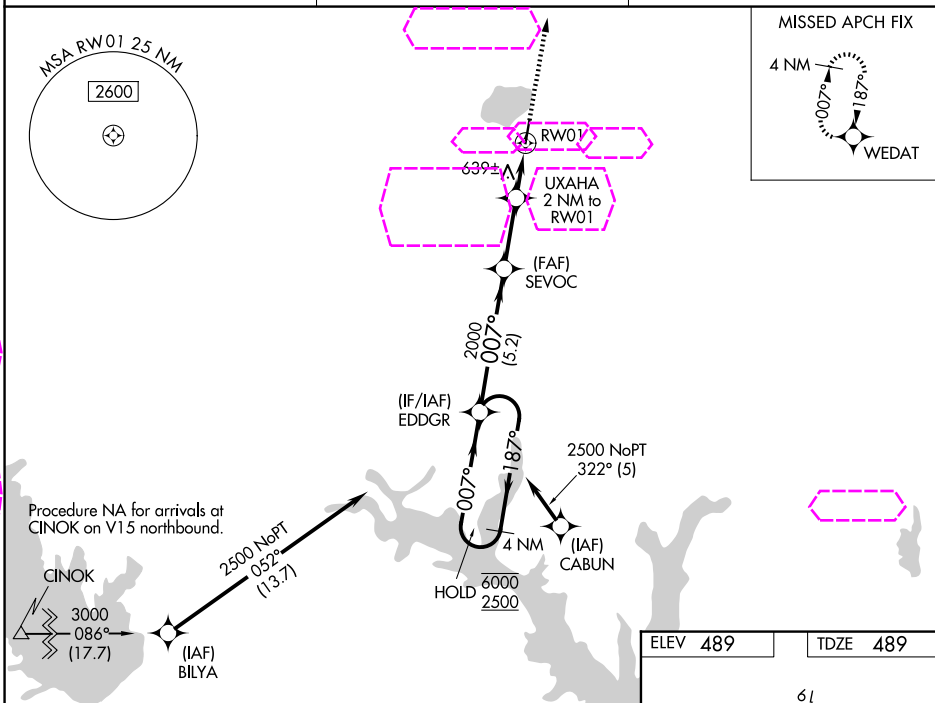
RNAV (GPS) RWY 1
SULPHUR SPRINGS MUNI (SLR)

RNP APCH-GPS.

- T** Circling NA east of Rwy 1-19. Rwy 1 helicopter visibility reduction below $\frac{3}{4}$ SM NA.
A For uncompensated Baro-VNAV systems, LNAV/VNAV NA below -15°C or above 54°C.

MISSED APPROACH: Climb to 3000 direct WEDAT and hold.

AWOS-3 118.35	FORT WORTH CENTER 132.025 317.75	UNICOM 123.075 (CTAF) 0
-------------------------	--	-----------------------------------



SULPHUR SPRINGS, TEXAS
Amdt 1E 03NOV22

33°10'N-95°37'W

SULPHUR SPRINGS MUNI (SLR)
RNAV (GPS) RWY 1

SC-2, 07 AUG 2025 to 04 SEP 2025

SC-2, 07 AUG 2025 to 04 SEP 2025