

| | | |
|--|------------------------|---|
| WAAS CH 90323 W19A | APP CRS 187° | Rwy Idg 5001 TDZE 476 Apt Elev 489 |
|--|------------------------|---|

RNAV (GPS) RWY 19
SULPHUR SPRINGS MUNI (SLR)

RNP APCH-GPS.

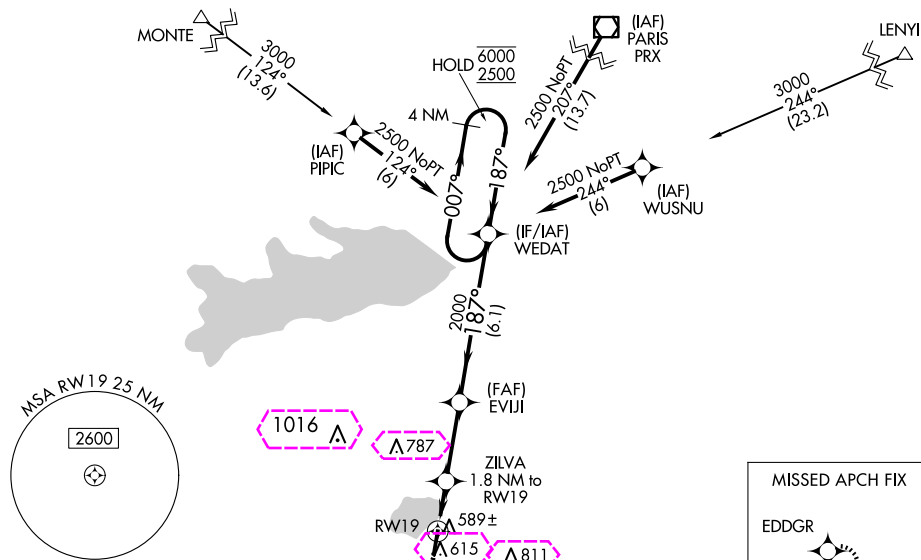
T Circling NA east of Rwy 1-19. For uncompensated
A Baro-VNAV systems, LNAV/VNAV NA below -15°C
or above 54°C.

MISSED APPROACH: Climb to 3000 direct EDDGR and hold.

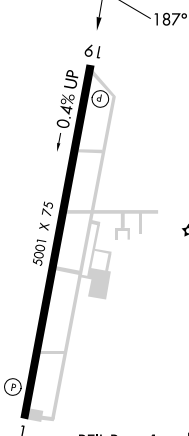
AWOS-3
118.35

FORT WORTH CENTER
132.025 360.75

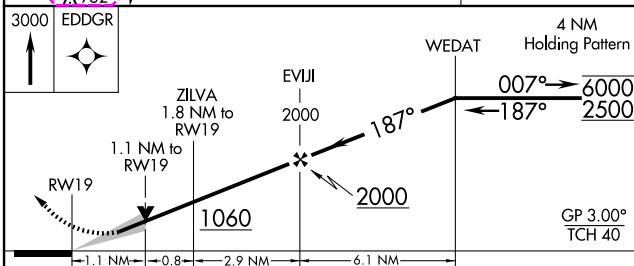
UNICOM
123.075 (CTAF) **L**




| | | |
|----------|---|----------|
| ELEV 489 | / | TDZE 476 |
|----------|---|----------|



REIL Rwy 1 and 19 **L**
MIRL Rwy 1- 19 **L**



| CATEGORY | | A | B | C | D |
|---|-----|---------|---------------|-------------------------------|----|
| LPV | DA | 726-3/4 | 250 (300-3/4) | | NA |
| LNNAV/ VNAV | DA | 776-1 | 300 (300-1) | | NA |
| LNNAV | MDA | 840-1 | 364 (400-1) | | NA |
|  | | 940-1 | 451 (500-1) | 1000-1 1/2 511 (600-1 1/2) | NA |

SULPHUR SPRINGS, TEXAS
Orig-F 21MAR24

33°10'N-95°37'W

SULPHUR SPRINGS MUNI (SLR)
RNAV (GPS) RWY 19

SULPHUR SPRINGS, TEXAS

AL-5559 (FAA)

25219

| | | |
|--|------------------------|---|
| WAAS CH 90323 W19A | APP CRS 187° | Rwy Ldg TDZE 476 Apt Elev 489 |
|--|------------------------|---|

RNAV (GPS) RWY 19

SULPHUR SPRINGS MUNI (SLR)

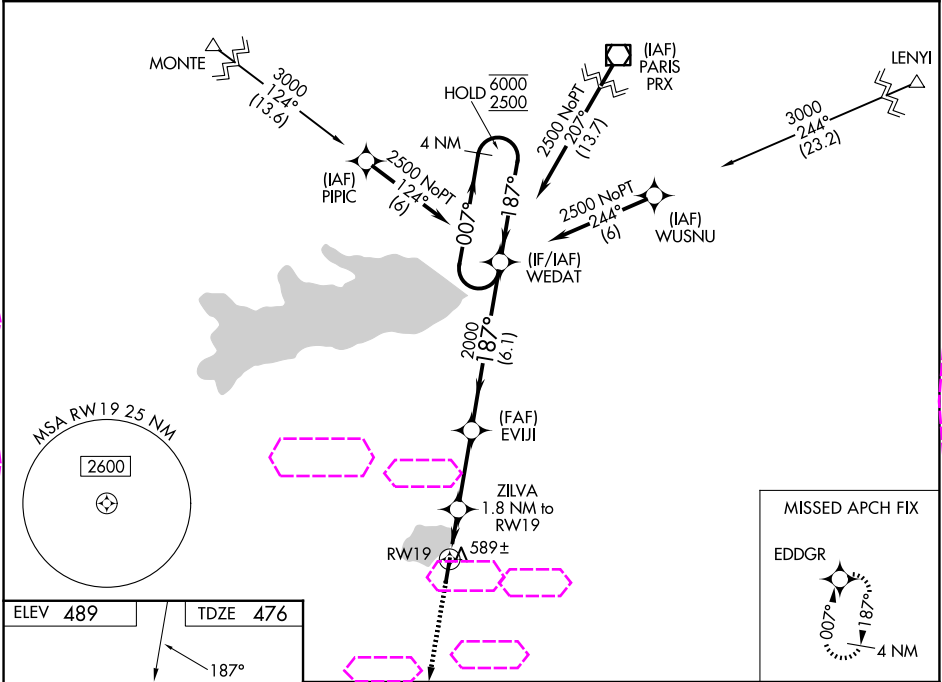
RNP APCH-GPS.

⚠

Circling NA east of Rwy 1-19. For uncompensated Baro-VNAV systems, LNAV/VNAV NA below -15°C or above 54°C.

MISSED APPROACH: Climb to 3000 direct EDDGR and hold.

| | | |
|-------------------------|--|--|
| AWOS-3 118.35 | FORT WORTH CENTER 132.025 317.75 | UNICOM 123.075 (CTAF) 0 |
|-------------------------|--|--|



ELEV **489** | TDZE **476**

REIL Rwy 1 and 19 **0**
MIRL Rwy 1- 19 **0**

3000 EDDGR

WEDAT 4 NM Holding Pattern

GP 3.00° TCH 40

1.1 NM to RW19

1.1 NM

0.8

2.9 NM

6.1 NM

| CATEGORY | A | B | C | D |
|--------------|-------|-------------|-------------------------|----|
| LPV DA | 726-¾ | 250 (300-¾) | | NA |
| LNAV/VNAV DA | 776-1 | 300 (300-1) | | NA |
| LNAV MDA | 840-1 | 364 (400-1) | | NA |
| CIRCLING | 940-1 | 451 (500-1) | 1000-1½ 511 (600-1½) | NA |

SC-2, 07 AUG 2025 to 04 SEP 2025

SC-2, 07 AUG 2025 to 04 SEP 2025