

BEDFORD, INDIANA

AL-5546 (FAA)

25107

|            |         |          |      |
|------------|---------|----------|------|
| VORTAC OOM | APP CRS | Rwy Idg  | 4501 |
| 110.2      | 159°    | TDZE     | 721  |
| Chan 39    |         | Apt Elev | 727  |

# VOR RWY 13

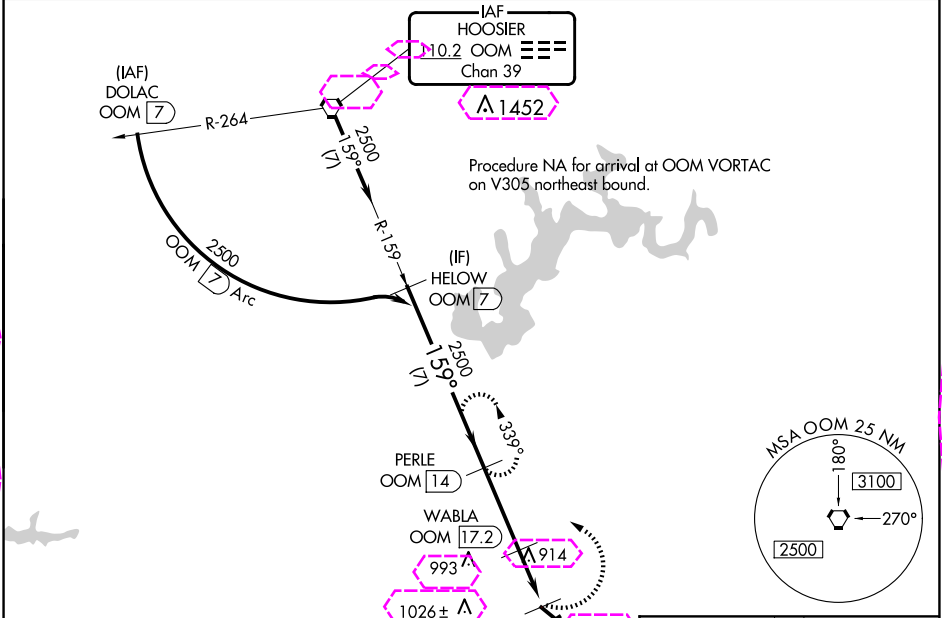
VIRGIL I GRISSOM MUNI (BFR)

DME required.

Procedure NA at night. Rwy 13 helicopter visibility reduction below 1 SM NA. When local altimeter setting not received, use Bloomington altimeter setting: increase all MDAs 80 feet and S-13 and Circling Cats C and D visibilities 1/4 SM.

MISSED APPROACH: Climbing left turn to 2500 on OOM VORTAC R-159 to PERLE/14 DME and hold, continue climb-in-hold to 2500.

|                     |                                     |                          |
|---------------------|-------------------------------------|--------------------------|
| AWOS-3PT<br>119.125 | LOUISVILLE APP CON<br>132.075 327.0 | UNICOM<br>122.8 (CTAF) 0 |
|---------------------|-------------------------------------|--------------------------|



|   |        |             |                         |                       |
|---|--------|-------------|-------------------------|-----------------------|
| <div><div>FANAB<br/>OOM 19.4</div><div>Λ 860</div><div>ELEV 727</div><div>TDZE 721</div></div>  |        |             |                         |                       |
| <div><div><div>HELOW<br/>OOM 7</div><div>PERLE<br/>OOM 14</div><div>2500</div><div>159°</div><div>2500</div><div>WABLA<br/>OOM 17.2</div><div>FANAB<br/>OOM 19.4</div><div>1380</div><div>7 NM</div><div>3.2 NM</div><div>2.2 NM</div></div><div><div>2500</div><div>PERLE<br/>OOM 14</div><div>OOM R-159</div></div></div> |        |             |                         |                       |
| CATEGORY  | A      | B           | C                       | D                     |
| S-13  | 1300-1 | 579 (600-1) | 1300-1½                 | 579 (600-1½)          |
| CIRCLING  | 1300-1 | 573 (600-1) | 1380-1¾<br>653 (700-1¾) | 1380-2<br>653 (700-2) |
| <div><div>MIRL Rwy 6-24 and 13-31</div><div>REIL Rwy 13 and 31</div></div>  |        |             |                         |                       |

BEDFORD, INDIANA

AL-5546 (FAA)

25219

|            |         |          |      |
|------------|---------|----------|------|
| VORTAC OOM | APP CRS | Rwy Ldg  | 4501 |
| 110.2      | 159°    | TDZE     | 721  |
| Chan 39    |         | Apt Elev | 727  |

# VOR RWY 13

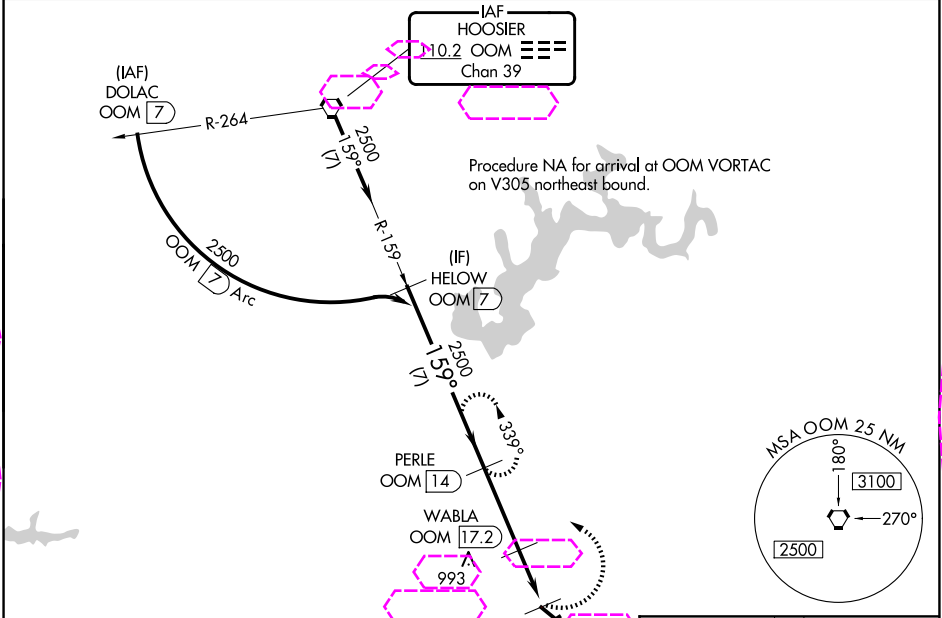
VIRGIL I GRISSOM MUNI (BFR)

DME required.

Procedure NA at night. Rwy 13 helicopter visibility reduction below 1 SM NA. When local altimeter setting not received, use Bloomington altimeter setting: increase all MDAs 80 feet and S-13 and Circling Cats C and D visibilities 1/4 SM.

MISSED APPROACH: Climbing left turn to 2500 on OOM VORTAC R-159 to PERLE/14 DME and hold, continue climb-in-hold to 2500.

|                     |                                     |                          |
|---------------------|-------------------------------------|--------------------------|
| AWOS-3PT<br>119.125 | LOUISVILLE APP CON<br>123.675 327.0 | UNICOM<br>122.8 (CTAF) 0 |
|---------------------|-------------------------------------|--------------------------|



|          |        |  |             |  |                           |  |                       |  |
|----------|--------|--|-------------|--|---------------------------|--|-----------------------|--|
|          |        |  |             |  | ELEV 727                  |  | TDZE 721              |  |
|          |        |  |             |  |                           |  |                       |  |
|          |        |  |             |  |                           |  |                       |  |
|          |        |  |             |  |                           |  |                       |  |
| CATEGORY | A      |  | B           |  | C                         |  | D                     |  |
| S-13     | 1300-1 |  | 579 (600-1) |  | 1300-1½                   |  | 579 (600-1½)          |  |
| CIRCLING | 1300-1 |  | 573 (600-1) |  | 1380-1¾<br>653 (700-1¾)   |  | 1380-2<br>653 (700-2) |  |
|          |        |  |             |  | MIRL Rwy's 6-24 and 13-31 |  |                       |  |
|          |        |  |             |  | REIL Rwy's 13 and 31      |  |                       |  |

BEDFORD, INDIANA  
Amdt 10D 29DEC22

38°50'N-86°27'W

VIRGIL I GRISSOM MUNI (BFR)  
VOR RWY 13

EC-2, 07 AUG 2025 to 04 SEP 2025

EC-2, 07 AUG 2025 to 04 SEP 2025