

VIRGIL I GRISSOM MUNI (BFR)  
RNAV (GPS) RWY 31

EC-2, 10 JUL 2025 to 07 AUG 2025

BEDFORD, INDIANA

AL-5546 (FAA)

25219

WAAS CH <b>97525</b> <b>W31A</b>	APP CRS <b>313°</b>	Rwy Ldg TDZE <b>725</b> Apt Elev <b>727</b>
--	------------------------	---

# RNAV (GPS) RWY 31

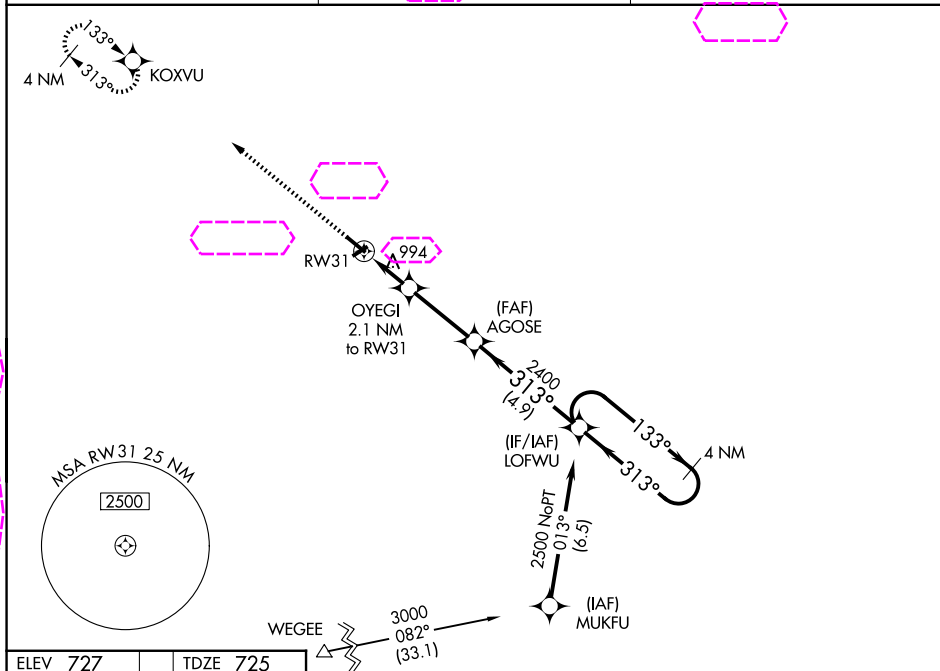
VIRGIL I GRISSOM MUNI (BFR)

RNP APCH - GPS.

- ▼ When local altimeter setting not received, use BMG altimeter setting and increase all MDAs 80 feet and LNAV visibility Cat C/D ¼ SM, and LP visibility Cat C/D ¼ SM, and Circling visibility Cat C/D ¼ SM. Procedure NA at night. Rwy 31 helicopter visibility reduction below 1 SM NA.

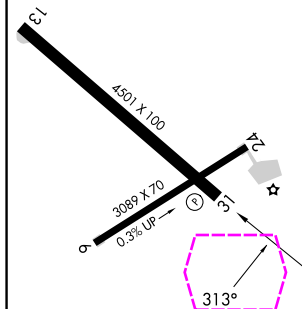
MISSED APPROACH:  
Climb to 2500 direct  
KOKVU and hold.

AWOS-3PT <b>119.125</b>	LOUISVILLE APP CON <b>123.675 327.0</b>	UNICOM <b>122.8</b> (CTAF) <b>0</b>
----------------------------	--	--



ELEV 727	TDZE 725
----------	----------

Procedure NA for arrivals  
at WEGEE on V305  
southwest bound.



2500 ↑ KOKVU		Visual Segment - Obstacles.		4 NM Holding Pattern	
RW31		OYEGI 2.1 NM to RW31		LOFWU	
2.1 NM		3 NM		4.9 NM	
1420		2400		133° ← 313° → 2500	
AGOSE					
N					
CATEGORY	A	B	C	D	
LP MDA	1260-1 535 (600-1)		1260-1½ 535 (600-1½)		
LNAV MDA	1260-1 535 (600-1)		1260-1½ 535 (600-1½)		
CIRCLING	1300-1 573 (600-1)		1380-1¼ 653 (700-1¼)	1380-2 653 (700-2)	

BEDFORD, INDIANA  
Amdt 1D 07AUG25

38°50'N - 86°27'W

VIRGIL I GRISSOM MUNI (BFR)  
RNAV (GPS) RWY 31

EC-2, 07 AUG 2025 to 04 SEP 2025

EC-2, 07 AUG 2025 to 04 SEP 2025