

ENDICOTT, NEW YORK

AL-5543 (FAA)

24249

APP CRS	Rwy Idg	3900
036°	TDZE	833
	Apt Elev	833

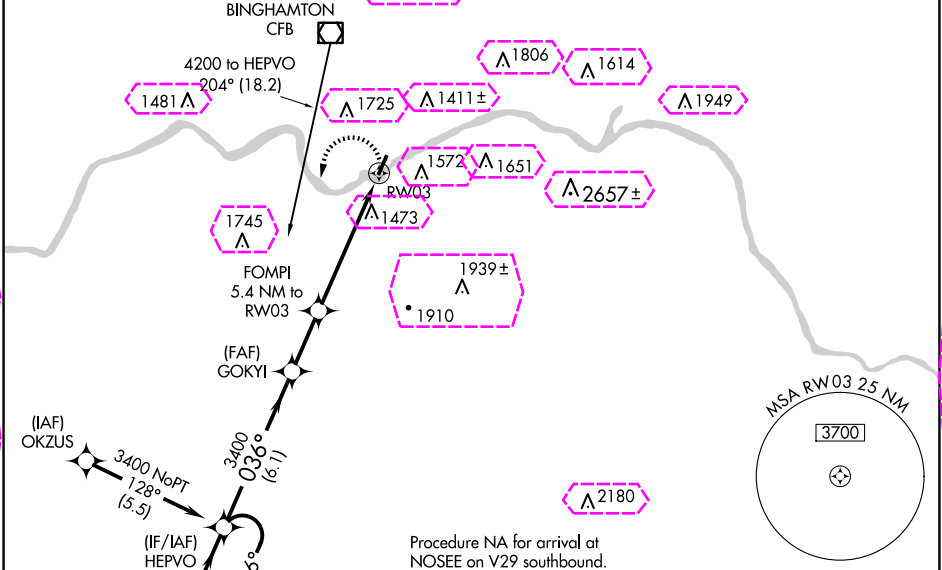
RNAV (GPS) RWY 3

TRI-CITIES (CZG)

<p>NA</p> <p>-17°C</p>	<p>DME/DME RNP-0.3 NA. Procedure NA at night.</p> <p>Rwy 3 helicopter visibility reduction below 1 SM NA.</p>	<p>MISSED APPROACH: Climbing left turn to 3400 direct HEPVO and hold.</p>
------------------------	---	---

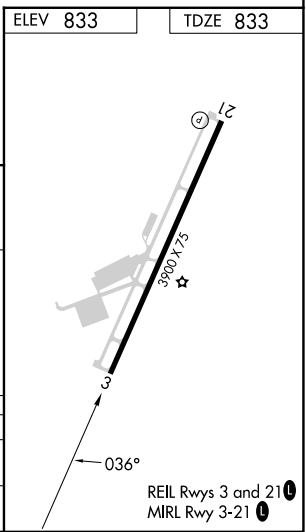
<p>AWOS-3</p> <p>119.075</p>	<p>BINGHAMTON APP CON *</p> <p>118.6 257.625</p>	<p>CLNC DEL</p> <p>121.7</p>	<p>UNICOM</p> <p>122.8 (CTAF) 0</p>
------------------------------	--	------------------------------	-------------------------------------

Procedure NA for arrival on CFB VOR/DME airway radials 154 CW 220.



ELEV 833	TDZE 833
----------	----------

Visual Segment - Obstacles.				
4 NM Holding Pattern		HEPVO	GOKYI	FOMPI 5.4 NM to RW03
3400 ← 216° → 036° → 3400				
				2580
				RW03
		6.1 NM	2.4 NM	5.4 NM
CATEGORY	A	B	C	D
LNVA MDA	2160-1¼ 1327 (1400-1¼)	2160-1½ 1327 (1400-1½)	NA	
CIRCLING	2160-1¼ 1327 (1400-1¼)	2160-1½ 1327 (1400-1½)	NA	



ENDICOTT, NEW YORK
Orig-B 07DEC17

42°05'N - 76°06'W

RNAV (GPS) RWY 3

TRI-CITIES (CZG)

ENDICOTT, NEW YORK

AL-5543 (FAA)

25219

APP CRS 036°	Rwy Ldg TDZE Apt Elev	3900 833 833
------------------------	-----------------------------	---

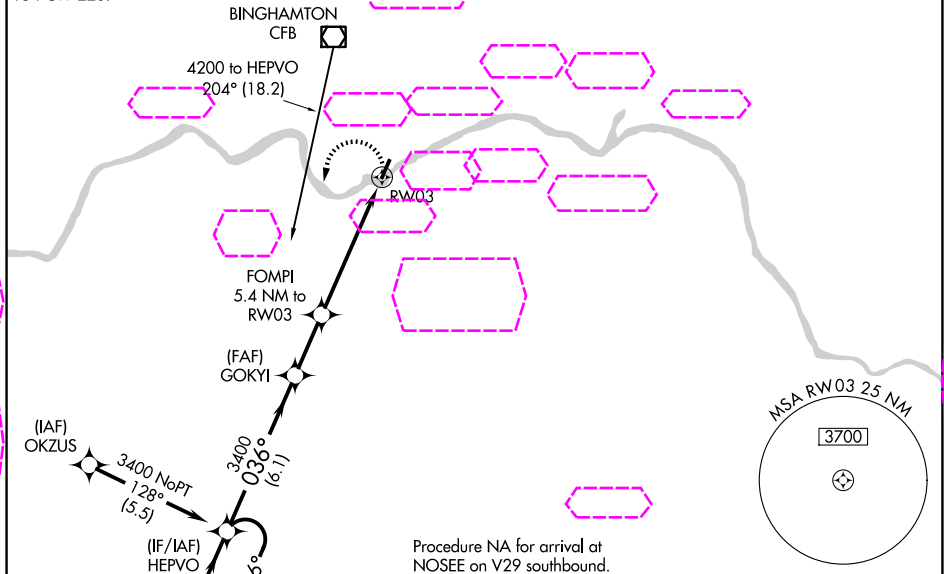
RNAV (GPS) RWY 3

TRI-CITIES (CZG)

NA -16°C	DME/DME RNP-0.3 NA. Procedure NA at night. Rwy 3 helicopter visibility reduction below 1 SM NA.	MISSED APPROACH: Climbing left turn to 3400 direct HEPVO and hold.
--------------------	--	--

AWOS-3 119.075	BINGHAMTON APP CON ★ 118.6 257.625	CLNC DEL 121.7	UNICOM 122.8 (CTAF) 0
--------------------------	--	--------------------------	---------------------------------

Procedure NA for arrival on
CFB VOR/DME airway radials
154 CW 220.



Visual Segment - Obstacles.

CATEGORY	A	B	C	D
LNNAV MDA	2160-1¼ 1327 (1400-1¼)	2160-1½ 1327 (1400-1½)	NA	NA
CIRCLING	2160-1¼ 1327 (1400-1¼)	2160-1½ 1327 (1400-1½)	NA	NA

ENDICOTT, NEW YORK

Orig-B 07DEC17

42°05'N - 76°06'W

RNAV (GPS) RWY 3

TRI-CITIES (CZG)