

MAXTON, NORTH CAROLINA

AL-5519 (FAA)

22027

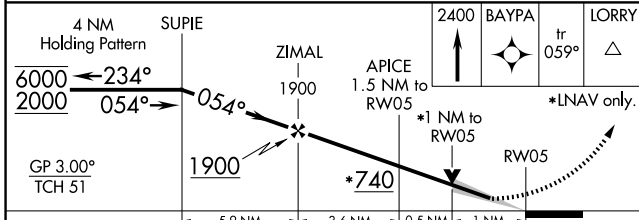
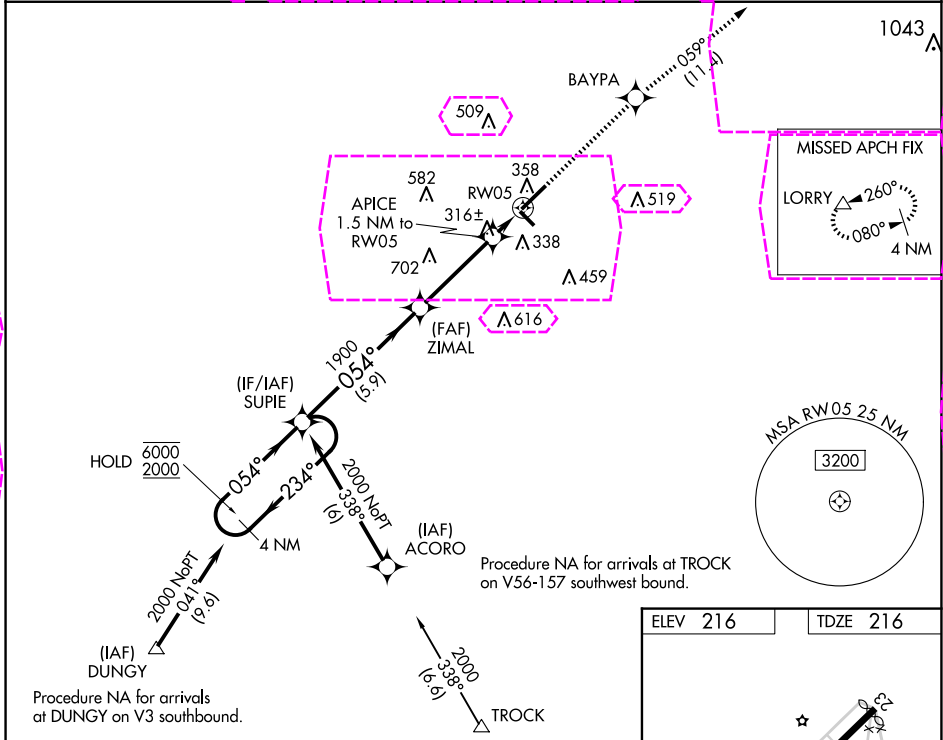
WAAS CH 90423 W05A	APP CRS 054°	Rwy Idg TDZE 216 Apt Elev 216
--	------------------------	---

RNAV (GPS) RWY 5

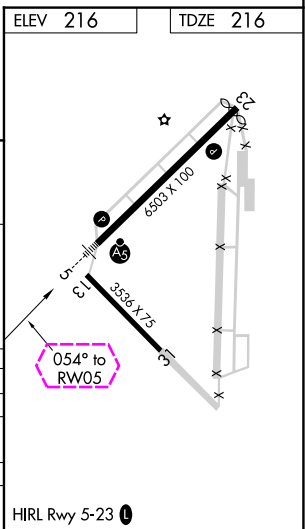
LAURINBURG/MAXTON (MEB)

RNP APCH. ▼ Circling to Rwy 13 and 31 NA at night. For uncompensated Baro-VNAV systems, LNAV/VNAV NA below -15°C or above 42°C. For inop ALS, increase LNAV/VNAV all Cats visibility to ¾ SM, and LNAV Cat C/D visibility to 1 SM. ▲	MALSR ▲	MISSED APPROACH: Climb to 2400 direct BAYPA and on track 059° to LORRY and hold.
--	------------	--

ASOS 134.125	FAYETTEVILLE APP CON 127.8 343.725	GCO 135.075	UNICOM 122.8 (CTAF) 0
------------------------	--	-----------------------	---------------------------------



CATEGORY	A	B	C	D
LPV DA		416-1/2	200 (200-1/2)	
LNAV/VNAV DA		472-1/2	256 (300-1/2)	
LNAV MDA	580-1/2	364 (400-1/2)	580-5/8	364 (400-5/8)
CIRCLING	740-1	524 (600-1)	780-1 1/2 564 (600-1 1/2)	1020-2 1/2 804 (900-2 1/2)



MAXTON, NORTH CAROLINA
Amdt 1C 10OCT19

34°48'N-79°22'W

LAURINBURG/MAXTON (MEB)
RNAV (GPS) RWY 5

MAXTON, NORTH CAROLINA

AL-5519 (FAA)

25219

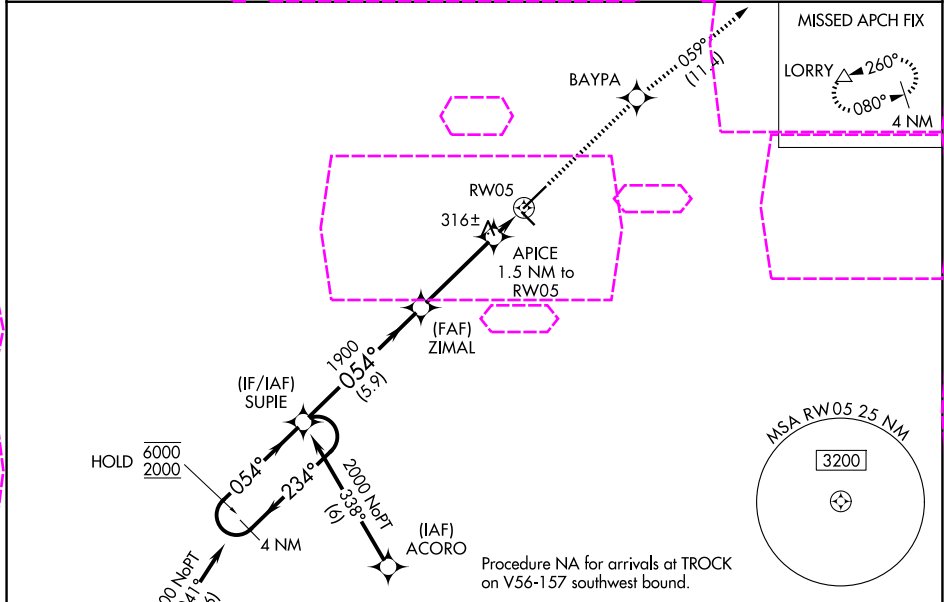
WAAS CH 90423 W05A	APP CRS 054°	Rwy Ldg TDZE 216 Apt Elev 216	6503
--	------------------------	---	-------------

RNAV (GPS) RWY 5

Laurinburg/Maxton (MEB)

RNP APCH. <div><div>▼</div><div>▲</div></div> <p>Circling to Rwy 13 and 31 NA at night. For uncompensated Baro-VNAV systems, LNAV/VNAV NA below -15°C or above 42°C. For inop ALS, increase LNAV/VNAV all Cats visibility to ¾ SM, and LNAV Cat C/D visibility to 1 SM.</p>	MALSR <div><div>AS</div><div>AS</div></div>	MISSED APPROACH: Climb to 2400 direct BAYPA and on track 059° to LORRY and hold.
--	--	--

ASOS 134.125	FAYETTEVILLE APP CON 127.8 343.725	UNICOM 122.8 (CTAF) 0
------------------------	--	--



4 NM Holding Pattern SUPIE		2400 BAYPA		LORRY	
6000 ← 234°		↑		tr 059°	
2000 → 054°		★		△	
GP 3.00° TCH 51		★ LNAV only.			
1900		APICE 1.5 NM to RW05		RW05	
5.9 NM		3.6 NM		0.5 NM	
A		B		C	
LPV DA		416-½		200 (200-½)	
LNAV/VNAV DA		472-½		256 (300-½)	
LNAV MDA		580-½		364 (400-½)	
CIRCLING		740-1		564 (600-1½)	
		524 (600-1)		804 (900-2½)	

MAXTON, NORTH CAROLINA
Amdt 1C 10OCT19

34°48'N-79°22'W

RNAV (GPS) RWY 5

Laurinburg/Maxton (MEB)

SE-2, 07 AUG 2025 to 04 SEP 2025

SE-2, 07 AUG 2025 to 04 SEP 2025