

MAXTON, NORTH CAROLINA

AL-5519 (FAA)

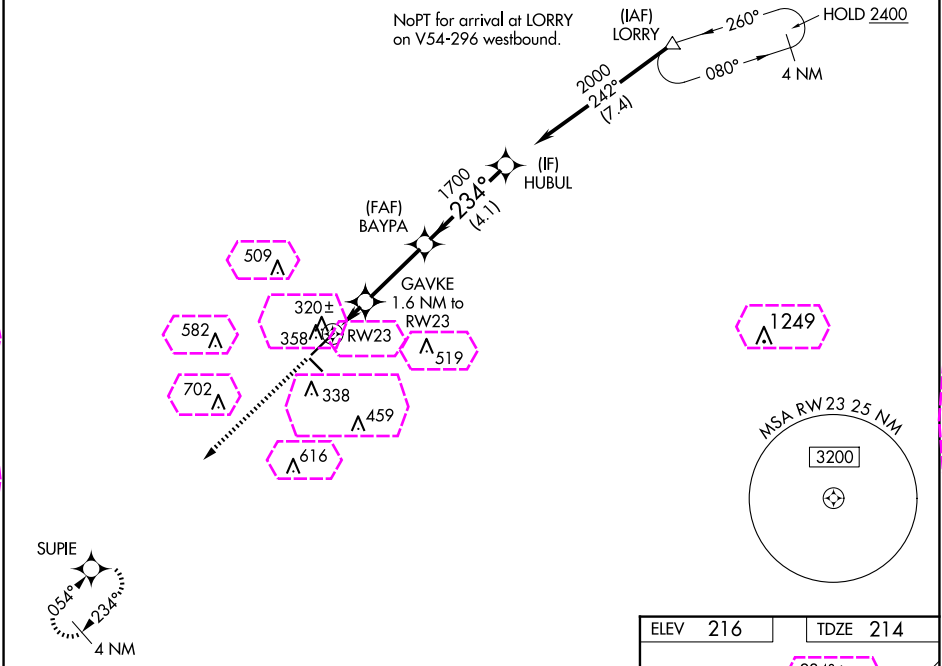
22223

WAAS CH 61023 W23A	APP CRS 234°	Rwy Idg TDZE Apt Elev	6316 214 216
--	------------------------	-----------------------------	---

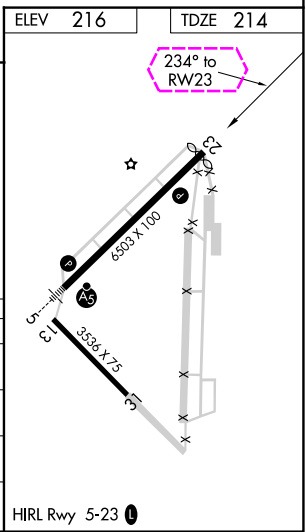
RNAV (GPS) RWY 23

LAURINBURG/MAXTON (MEB)

RNP APCH-GPS. ⚠ Circling to Rwy 13 and 31 NA at night. Rwy 23 helicopter visibility reduction below 3/4 SM NA. For uncompensated Baro-VNAV systems, LNAV/VNAV NA below -11°C or above 54°C.		MISSED APPROACH: Climb to 2000 direct SUPIE and hold.	
ASOS 134.125	FAYETTEVILLE APP CON 127.8 343.725	GCO 135.075	UNICOM 122.8 (CTAF) 0



2000 ↑ SUPIE		HUBUL			
RW23		GAVKE 1.6 NM to RW23	BAYPA 1700	2000	
1.1 NM to RW23		234°			
760		1700			
GP 3.00° TCH 38					
1.1 NM		0.5 NM	3 NM	4.1 NM	
CATEGORY	A	B	C	D	
LPV DA	483-7/8 269 (300-7/8)				
LNAV/ VNAV DA	483-7/8 269 (300-7/8)				
LNAV MDA	580-1 366 (400-1)				
CIRCLING	740-1	524 (600-1)	780-1½ 564 (600-1½)	1020-2½ 804 (900-2½)	



MAXTON, NORTH CAROLINA

AL-5519 (FAA)

25219

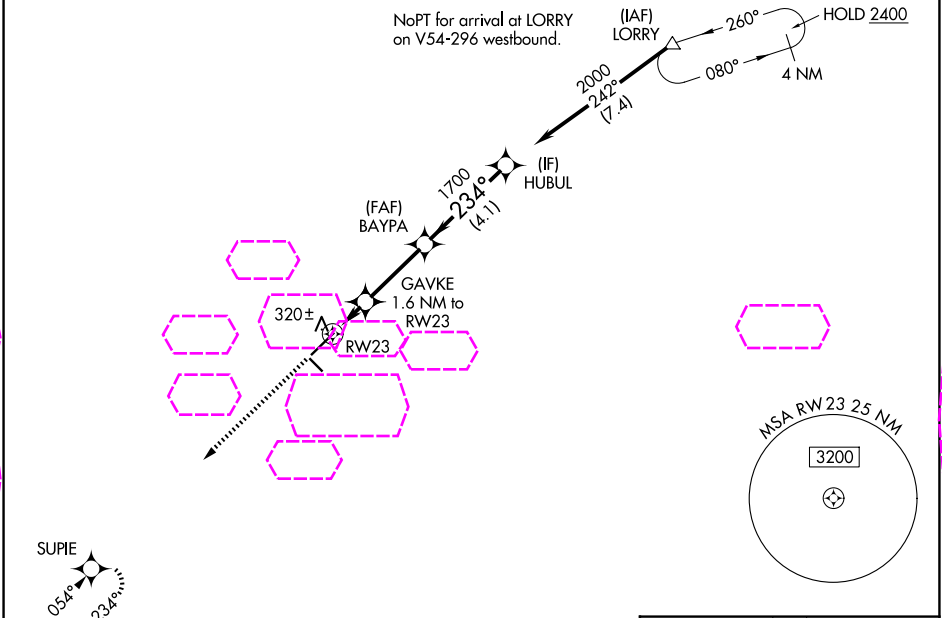
WAAS CH 61023 W23A	APP CRS 234°	Rwy Ldg TDZE Apt Elev	6316 214 216
--	------------------------	-----------------------------	---

RNAV (GPS) RWY 23

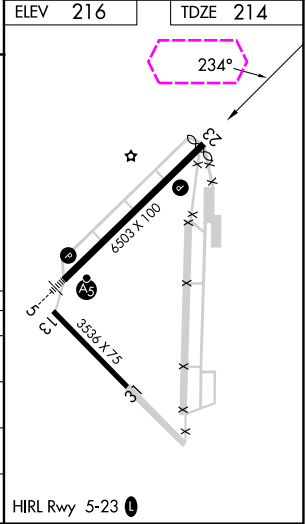
LAURINBURG/MAXTON (MEB)

RNP APCH-GPS. ▼ Circling to Rwy 13 and 31 NA at night. Rwy 23 helicopter visibility reduction below ¾ SM NA. For uncompensated Baro-VNAV systems, LNAV/VNAV NA below -11°C or above 54°C. ▲	MISSED APPROACH: Climb to 2000 direct SUPIE and hold.
---	---

ASOS 134.125	FAYETTEVILLE APP CON 127.8 343.725	UNICOM 122.8 (CTAF) 0
------------------------	--	---------------------------------



2000	SUPIE				
↑	✧				
RW23		HUBUL			
1.1 NM to RW23		BAYPA		2000	
760		1700		GP 3.00° TCH 38	
1.1 NM		0.5 NM		3 NM	
1.6 NM to RW23		4.1 NM			
CATEGORY	A	B	C	D	
LPV DA		483-7/8	269 (300-7/8)		
LNAV/VNAV DA		483-7/8	269 (300-7/8)		
LNAV MDA		580-1	366 (400-1)		
CIRCLING	740-1	524 (600-1)	780-1½ 564 (600-1½)	1020-2½ 804 (900-2½)	



MAXTON, NORTH CAROLINA
Amdt 2A 11AUG22

34°48'N-79°22'W

LAURINBURG/MAXTON (MEB)
RNAV (GPS) RWY 23

SE-2, 07 AUG 2025 to 04 SEP 2025

SE-2, 07 AUG 2025 to 04 SEP 2025