

MAXTON, NORTH CAROLINA

AL-5519 (FAA)

22139

LOC I-MEB 110.7	APP CRS 054°	Rwy ldg TDZE Apt Elev 6503 216 216
---------------------------	------------------------	--

ILS or LOC RWY 5
LAURINBURG/MAXTON (MEB)

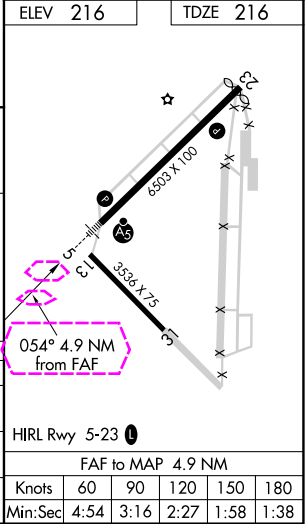
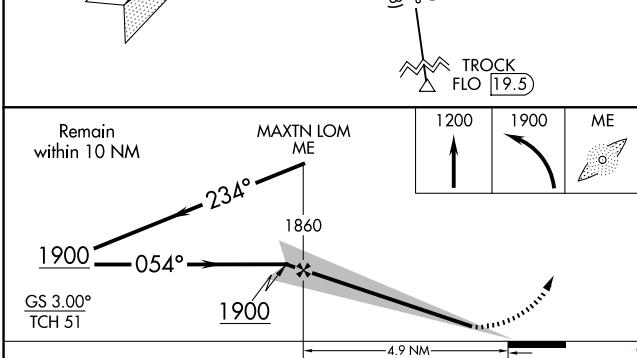
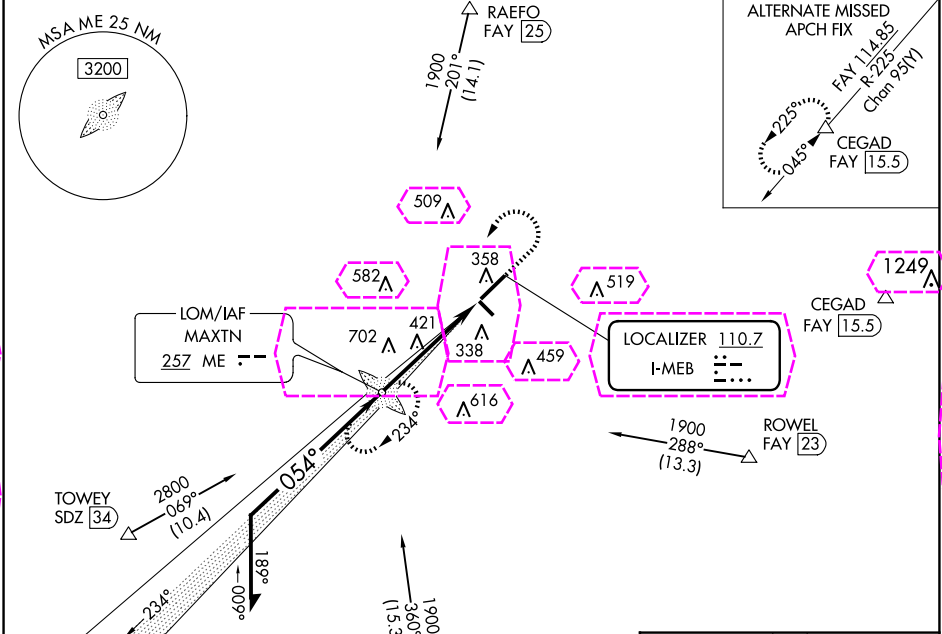
ADF required for procedure entry.
ADF required.

MALSR

MISSED APPROACH: Climb to 1200 then climbing left turn to 1900 direct MAXTN LOM and hold.

⚠ Circling Rwy 13 and 31 NA at night. For inop ALS, increase S-LOC 5 Cat C/D visibility to 1½ SM.

ASOS 134.125	FAYETTEVILLE APP CON 127.8 343.725	GCO 135.075	UNICOM 122.8 (CTAF) 0
------------------------	--	-----------------------	---------------------------------



CATEGORY	A	B	C	D
S-ILS 5	416-½ 200 (200-½)			
S-LOC 5	680-½ 464 (500-½)	680-1 464 (500-1)		
CIRCLING	740-1 524 (600-1)	780-1½ 564 (600-1½)	1020-2½ 804 (900-2½)	

MAXTON, NORTH CAROLINA
Amdt 2C 19MAY22

34°48'N-79°22'W

LAURINBURG/MAXTON (MEB)
ILS or LOC RWY 5

MAXTON, NORTH CAROLINA

AL-5519 (FAA)

25219

LOC I-MEB 110.7	APP CRS 054°	Rwy Ldg 6503 TDZE 216 Apt Elev 216
---------------------------	------------------------	--

ILS or LOC RWY 5
LAURINBURG/MAXTON (MEB)

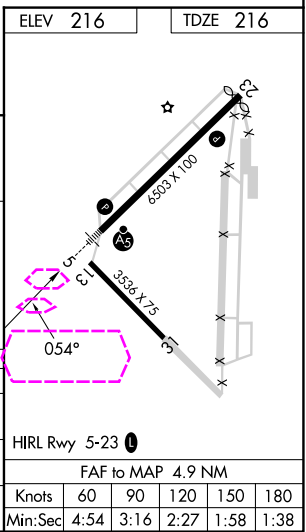
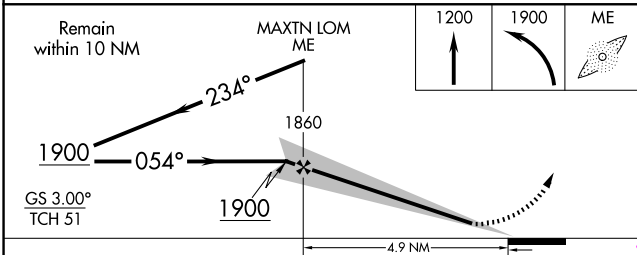
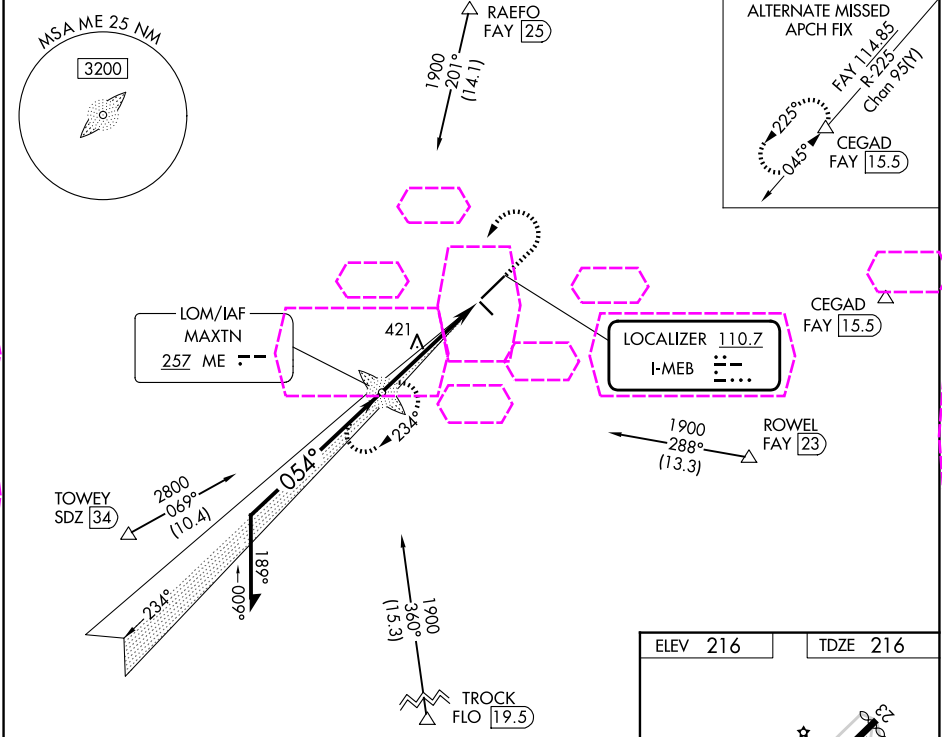
ADF required for procedure entry.
ADF required.

MALSR

MISSED APPROACH: Climb to 1200 then climbing left turn to 1900 direct MAXTN LOM and hold.

⚠ Circling Rwy 13 and 31 NA at night. For inop ALS, increase S-LOC 5 Cat C/D visibility to 1½ SM.

ASOS 134.125	FAYETTEVILLE APP CON 127.8 343.725	UNICOM 122.8 (CTAF) 0
------------------------	--	--



CATEGORY	A	B	C	D
S-ILS 5		416-½	200 (200-½)	
S-LOC 5	680-½	464 (500-½)	680-1	464 (500-1)
CIRCLING	740-1	524 (600-1)	780-1½ 564 (600-1½)	1020-2½ 804 (900-2½)

MAXTON, NORTH CAROLINA
Amdt 2C 19MAY22

34°48'N-79°22'W

LAURINBURG/MAXTON (MEB)
ILS or LOC RWY 5

SE-2, 07 AUG 2025 to 04 SEP 2025

SE-2, 07 AUG 2025 to 04 SEP 2025