

(CLTCH3.CLTCH) 24193

AL-5504 (FAA)

DAVISON AAF (DAA)  
FORT BELVOIR, VIRGINIA

# CLTCH THREE DEPARTURE (RNAV)

TOP ALTITUDE:  
3000

P-568

P-56A

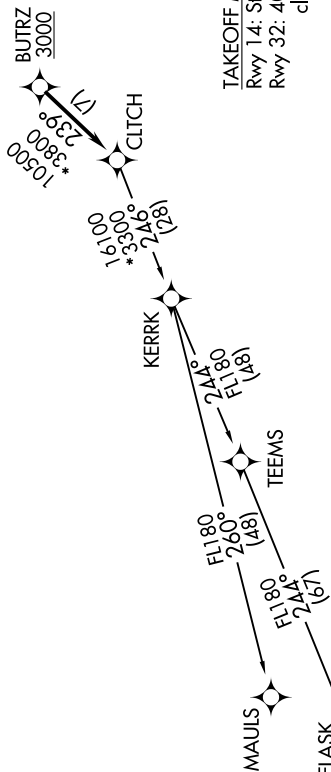
## DEPARTURE ROUTE DESCRIPTION

Climb on heading assigned by ATC, expect RADAR vectors to BUTRZ, then on track 239° to CLTCH, thence....  
....on assigned transition, maintain altitude assigned by ATC, expect clearance to filed altitude within ten (10) minutes after departure.

FLASK TRANSITION (CLTCH3.FLASK)  
MAULS TRANSITION (CLTCH3.MAULS)

POTOMAC DEP CON  
118.95 257.2  
ATIS  
128.175  
CLNC DEL  
351.8  
GND CON  
121.9 351.8  
DAVISON TOWER ★  
124.275 (CTAF) 229.4

NOTE: RNAV 1.  
NOTE: RADAR required.  
NOTE: DME/DME/IRU or GPS required.  
NOTE: Turbo-jets only.



TAKEOFF MINIMUMS:  
Rwy 14: Standard.  
Rwy 32: 400-2 or Standard with minimum climb of 300' per NM to 500.

NOTE: Chart not to scale.

CLTCH THREE DEPARTURE (RNAV)  
(CLTCH3.CLTCH) 31DEC20

FORT BELVOIR, VIRGINIA  
DAVISON AAF (DAA)

NE-3, 10 JUL 2025 to 07 AUG 2025

NE-3, 10 JUL 2025 to 07 AUG 2025

(CLTCH3.CLTCH) 25219

AL-5504 (FAA)

DAVISON AAF (KDA)A

FORT BELVOIR, VIRGINIA

# CLTCH THREE DEPARTURE (RNAV)

TOP ALTITUDE:  
3000

P-568

P-56A

## DEPARTURE ROUTE DESCRIPTION

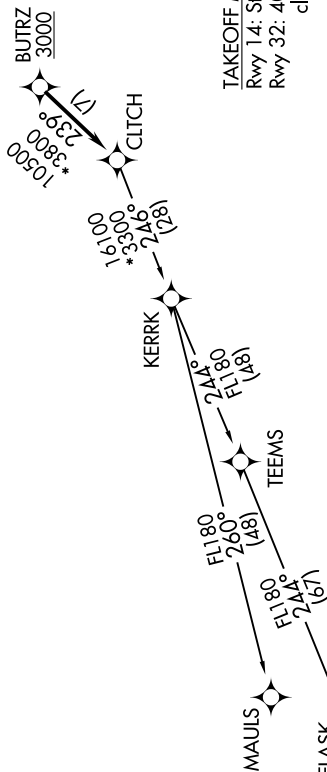
Climb on heading assigned by ATC, expect RADAR vectors to BUTRZ, then on track 239° to CLTCH, thence....

....on assigned transition, maintain altitude assigned by ATC, expect clearance to filed altitude within ten (10) minutes after departure.

FLASK TRANSITION (CLTCH3.FLASK)  
MAULS TRANSITION (CLTCH3.MAULS)

POTOMAC DEP CON  
118.95 257.2  
ATIS  
128.175  
CLNC DEL  
351.8  
GND CON  
121.9 351.8  
DAVISON TOWER ★  
124.275 (CTAF) 229.4

NOTE: RNAV 1.  
NOTE: RADAR required.  
NOTE: DME/DME/IRU or GPS required.  
NOTE: Turbo-jets only.



NOTE: Chart not to scale.

TAKEOFF MINIMUMS:

Rwy 14: Standard.

Rwy 32: 400-2 or Standard with minimum climb of 300' per NM to 500.

# CLTCH THREE DEPARTURE (RNAV)

(CLTCH3.CLTCH) 31DEC20

FORT BELVOIR, VIRGINIA

DAVISON AAF (KDA)A

NE-3, 07 AUG 2025 to 04 SEP 2025

NE-3, 07 AUG 2025 to 04 SEP 2025