




VOR/DME MAD 110.4 Chan 41	APP CRS 345°	Rwy Idg 3100 TDZE 99 Apt Elev 103
--	------------------------	--

VOR RWY 36

MERIDEN MARKHAM MUNI (MMK)

 	Rwy 36 helicopter visibility reduction below 1 SM NA. Procedure NA at night.		MISSED APPROACH: Climbing right turn to 2700 on HFD VOR/DME R-251 to MIDDLE INT/HFD 10.6 DME and hold, continue climb-in-hold to 2700.	
	ASOS 134.925	BRADLEY APP CON 127.8 269.325	CLNC DEL 120.65	UNICOM 123.05 (CTAF) 

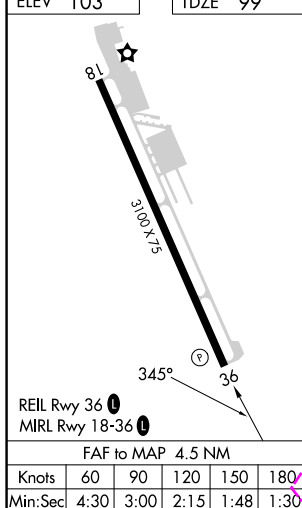
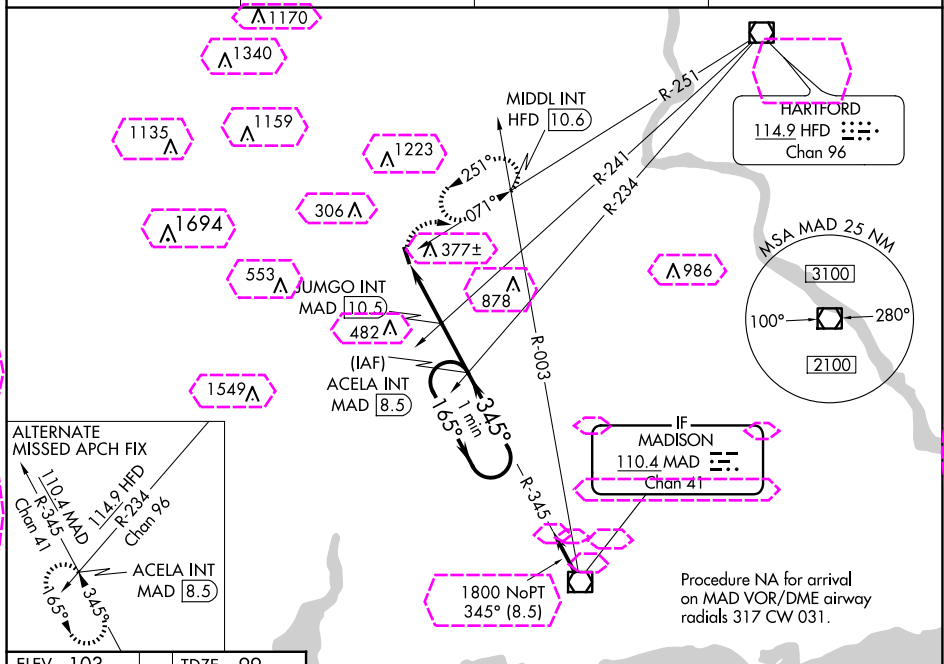


Diagram illustrating the JUMGO 10.5° TCH 38° VOR approach. The diagram shows a 345° inbound leg from 1800 feet to 1060 feet, followed by a 165° outbound leg. A 2.5 NM segment is marked before the 1060 feet fix, and a 2 NM segment is marked after. The diagram also shows the ACALA 8.5° MAD and the HFD R-251. The diagram is labeled with 'JUMGO INT MAD 10.5°' and 'One Minute Holding Pattern'.

MERIDEN, CONNECTICUT

AL-5493 (FAA)

25219

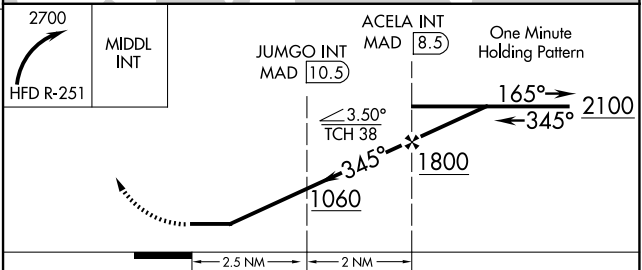
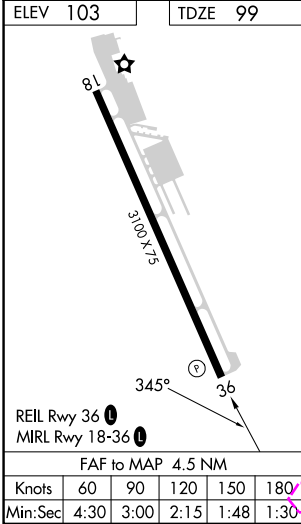
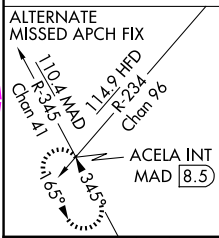
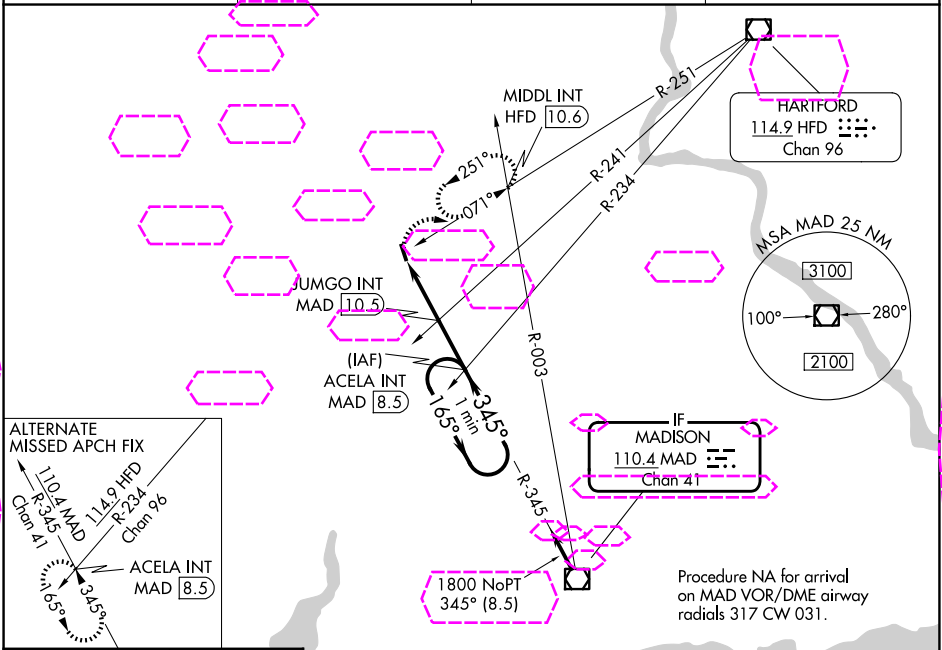
VOR/DME MAD	APP CRS	Rwy Ldg	3100
110.4	345°	TDZE	99
Chan 41		Apt Elev	103

VOR RWY 36

MERIDEN MARKHAM MUNI (MMK)

<p>▼ Rwy 36 helicopter visibility reduction below 1 SM NA. Procedure NA at night.</p> <p>▲ MISSED APPROACH: Climbing right turn to 2700 on HFD VOR/DME R-251 to MIDDLE INT/HFD 10.6 DME and hold, continue climb-in-hold to 2700.</p>

ASOS 134.925	YANKEE APP CON 127.8 269,325	CLNC DEL 120.65	UNICOM 123.05 (CTAF) 0
-----------------	---------------------------------	--------------------	---------------------------



CATEGORY	A	B	C	D
S-36	1060-1¼ 961 (1000-1¼)	1060-1½ 961 (1000-1½)	NA	
CIRCLING	1060-1¼ 957 (1000-1¼)	1060-1½ 957 (1000-1½)	NA	
JUMGO FIX MINIMUMS (DUAL VOR RECEIVERS OR DME REQUIRED)				
S-36	880-1 781 (800-1)	880-1¼ 781 (800-1¼)	NA	
CIRCLING	880-1 777 (800-1)	920-1¼ 817 (900-1¼)	NA	

MERIDEN, CONNECTICUT

Amtd 5 24MAY18

41°31'N-72°50'W

MERIDEN MARKHAM MUNI (MMK)

VOR RWY 36

NE-1, 07 AUG 2025 to 04 SEP 2025

NE-1, 07 AUG 2025 to 04 SEP 2025