

MERIDEN, CONNECTICUT

AL-5493 (FAA)

23166

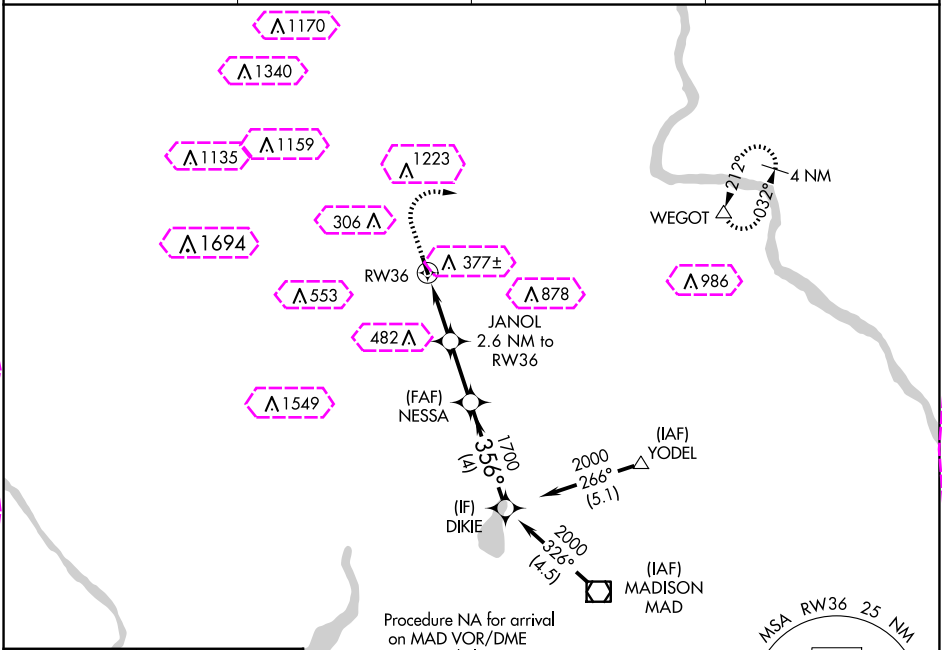
WAAS CH <b>81832</b> <b>W36A</b>	APP CRS <b>356°</b>	Rwy Idg TDZE <b>99</b> Apt Elev <b>103</b>
--	------------------------	--

# RNAV (GPS) RWY 36

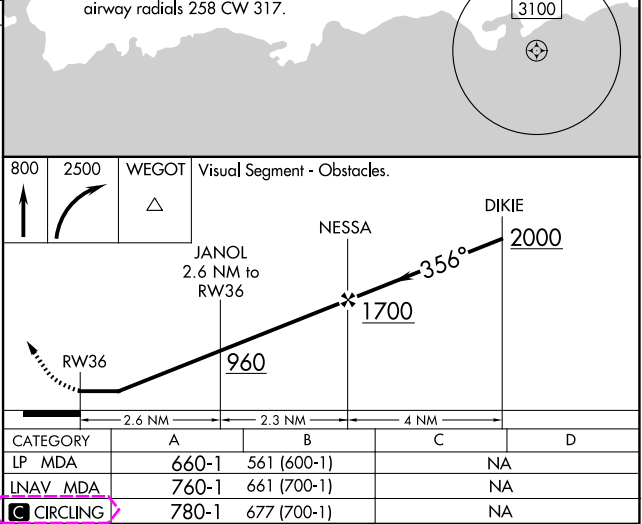
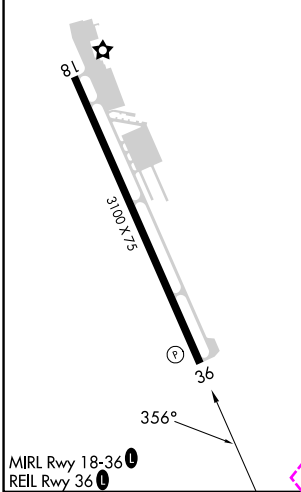
MERIDEN MARKHAM MUNI (MMK)

RNP APCH.	MISSED APPROACH: Climb to 800 then climbing right turn to 2500 direct WEGOT and hold.
▼ Procedure NA at night. ▲ Rwy 36 helicopter visibility reduction below 1 SM NA.	

ASOS <b>134.925</b>	BRADLEY APP CON <b>127.8 269.325</b>	CLNC DEL <b>120.65</b>	UNICOM <b>123.05</b> (CTAF) <b>0</b>
------------------------	---	---------------------------	---



ELEV <b>103</b>	TDZE <b>99</b>
-----------------	----------------



MERIDEN, CONNECTICUT

AL-5493 (FAA)

25219

WAAS CH <b>81832</b> <b>W36A</b>	APP CRS <b>356°</b>	Rwy Ldg TDZE <b>99</b> Apt Elev <b>103</b>
--	------------------------	--

# RNAV (GPS) RWY 36

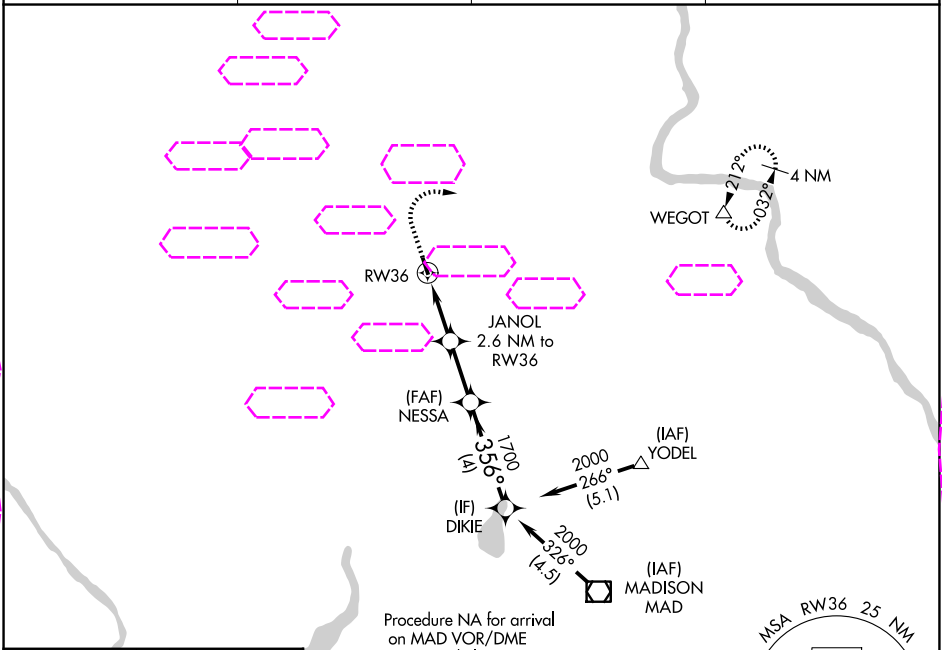
MERIDEN MARKHAM MUNI (MMK)

RNP APCH.

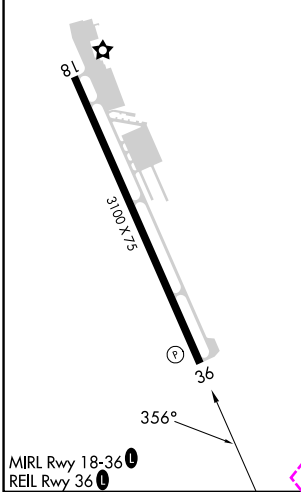
**Procedure NA at night.**  
**Rwy 36 helicopter visibility reduction below 1 SM NA.**

MISSED APPROACH: Climb to 800 then climbing right turn to 2500 direct WEGOT and hold.

ASOS <b>134.925</b>	<b>YANKEE APP CON</b> <b>127.8 269.325</b>	CLNC DEL <b>120.65</b>	UNICOM <b>123.05 (CTAF)</b>
------------------------	---	---------------------------	--------------------------------



ELEV <b>103</b>	TDZE <b>99</b>
-----------------	----------------



800	2500	WEGOT	Visual Segment - Obstacles.			
↑	↷	△				
			JANOL 2.6 NM to RW36	NESSA	DIKIE 2000	
			960	1700	356°	
			2.6 NM	2.3 NM	4 NM	
CATEGORY	A	B	C	D		
LP MDA	660-1	561 (600-1)	NA			
LNAV MDA	760-1	661 (700-1)	NA			
CIRCLING	780-1	677 (700-1)	NA			

MERIDEN, CONNECTICUT  
Orig-F 05NOV20

41°31'N-72°50'W

MERIDEN MARKHAM MUNI (MMK)  
RNAV (GPS) RWY 36

NE-1, 07 AUG 2025 to 04 SEP 2025

NE-1, 07 AUG 2025 to 04 SEP 2025