



MILLBROOK, NEW YORK

AL-5473 (FAA)

25219

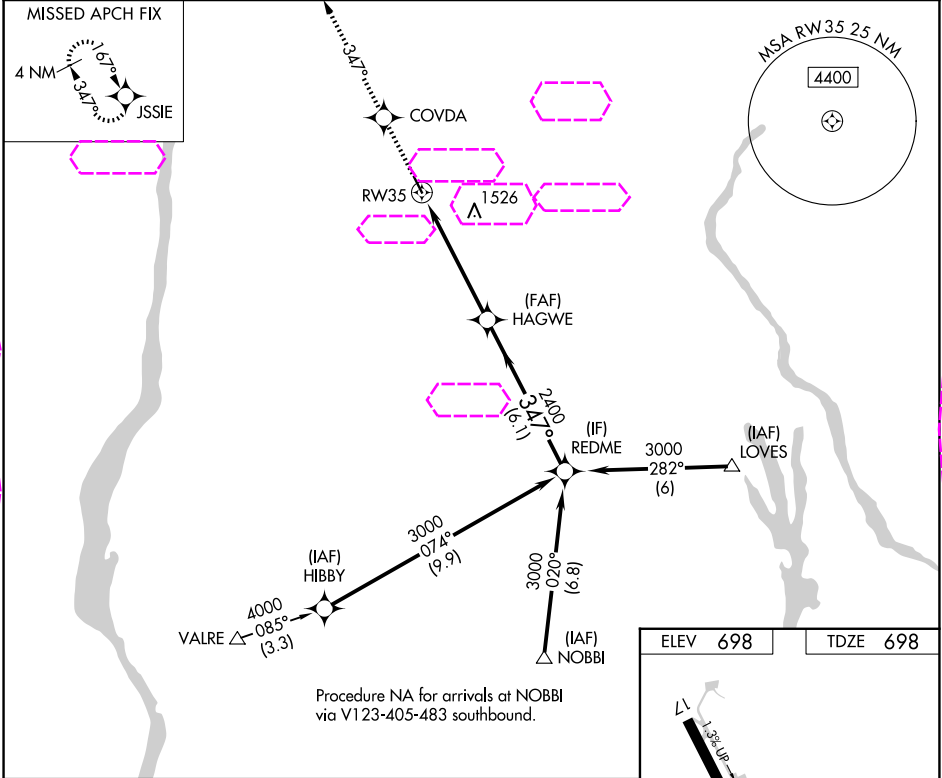
WAAS CH <b>86308</b> <b>W35A</b>	APP CRS <b>347°</b>	Rwy Idg TDZE <b>698</b> Apt Elev <b>698</b>	<b>3828</b>
--	------------------------	---	-------------

# RNAV (GPS) RWY 35

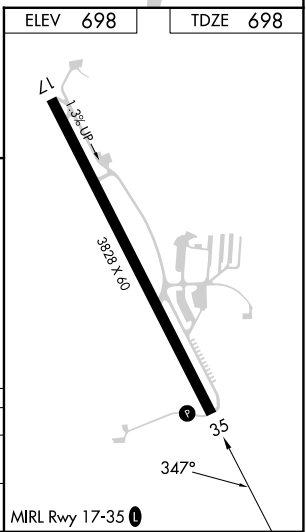
SKY ACRES (44N)

RNP APCH.	MISSED APPROACH: Climb to 3000 direct COVDA and via 347° track to JSSIE and hold.
NA 22°C	Use Newburgh altimeter setting; when not received use Poughkeepsie altimeter setting and increase LPV DA to 1063, and all MDA 20 feet.

SWF ASOS <b>124.575</b>	POU ASOS <b>126.75</b>	NEW YORK APP CON <b>132.75 363.1</b>	UNICOM <b>122.8 (CTAF)</b>
----------------------------	---------------------------	---	-------------------------------



3000 ↑	COVDA ✦	tr 347°	JSSIE ✦	VGSI and RNAV glidepath not coincident (VGSI Angle 3.00/TCH 33).	REDME	Procedure Turn NA
<p>The diagram illustrates a flight path starting from a thick black line representing the ground. A dashed line labeled 'RW35' indicates a runway or approach path. A solid line representing the glide path starts from the ground and ascends at an angle of 347°. A point on this path is marked with a cross and labeled 'HAGWE'. Below the path, two horizontal distances are indicated: 5.2 NM from the start to HAGWE, and 6.1 NM from HAGWE to a vertical line labeled 'REDME'. The altitude at HAGWE is labeled '2400', and the altitude at REDME is labeled '3000'. A note on the right side of the diagram states 'GP 3.00° TCH 40'.</p>						
CATEGORY		A	B	C	D	
LPV	DA	1046-1¼	348 (400-1¼)	NA		
LNAB	MDA	1700-1¼ 1002 (1100-1¼)	1700-1½ 1002 (1100-1½)	NA		



MILLBROOK, NEW YORK

Amdt 1A 07NOV19

41°42'N-73°44'W

# RNAV (GPS) RWY 35

SKY ACRES (44N)

NE-2, 07 AUG 2025 to 04 SEP 2025

NE-2, 07 AUG 2025 to 04 SEP 2025