

WACO, TEXAS

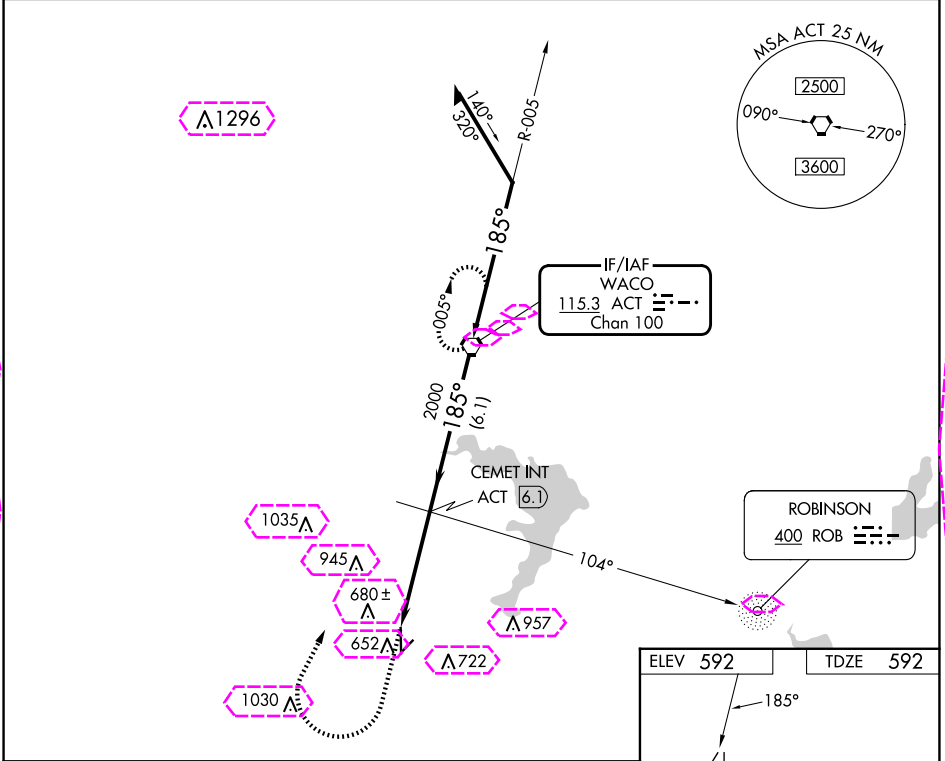
AL-5441 (FAA)




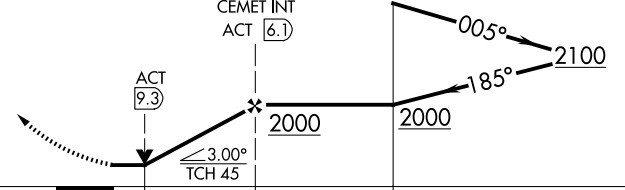

25107

VORTAC ACT	APP CRS	Rwy Idg	5501
115.3	185°	TDZE	592
Chan 100		Apt Elev	592

VOR RWY 17
MC GREGOR EXEC (PWG)

ADF or DME required.		MISSED APPROACH: Climb to 1000 then climbing right turn to 4000 direct ACT VORTAC and hold, continue climb-in-hold to 4000.	
ASR			
AWOS-3PT	WACO APP CON *	GCO	UNICOM
135.525	127.65 352.0	121.725	123.05 (CTAF) 0



1000	4000	ACT	VGSI and descent angles not coincident (VGSI Angle 3.00/TCH 36).		
			<div>Remain within 10 NM</div> 		
CEMET INT ACT 6.1		ACT VORTAC			
ACT 9.3		2100			
3.00° TCH 45		2000			
1.1		6.1 NM			
CATEGORY	A	B	C	D	
S-17	980-1	388 (400-1)	980-1 ¹ / ₈ 388 (400-1 ¹ / ₈)	NA	
 CIRCLING	980-1 388 (400-1)	1060-1 468 (500-1)	1300-2 708 (800-2)	NA	

ELEV 592	TDZE 592
185°	
Z1	
5501 X 75 0.4% UP	
3484 X 55	
35	
REIL Rwy 17 0	
MIRL Rwy 17-35 0	
FAF to MAP 4.3 NM	
Knots	60 90 120 150 180
Min:Sec	4:18 2:52 2:09 1:43 1:26

WACO, TEXAS

Amdt 11A 15JUN23

31°29'N-97°19'W

MC GREGOR EXEC (PWG)
VOR RWY 17

WACO, TEXAS

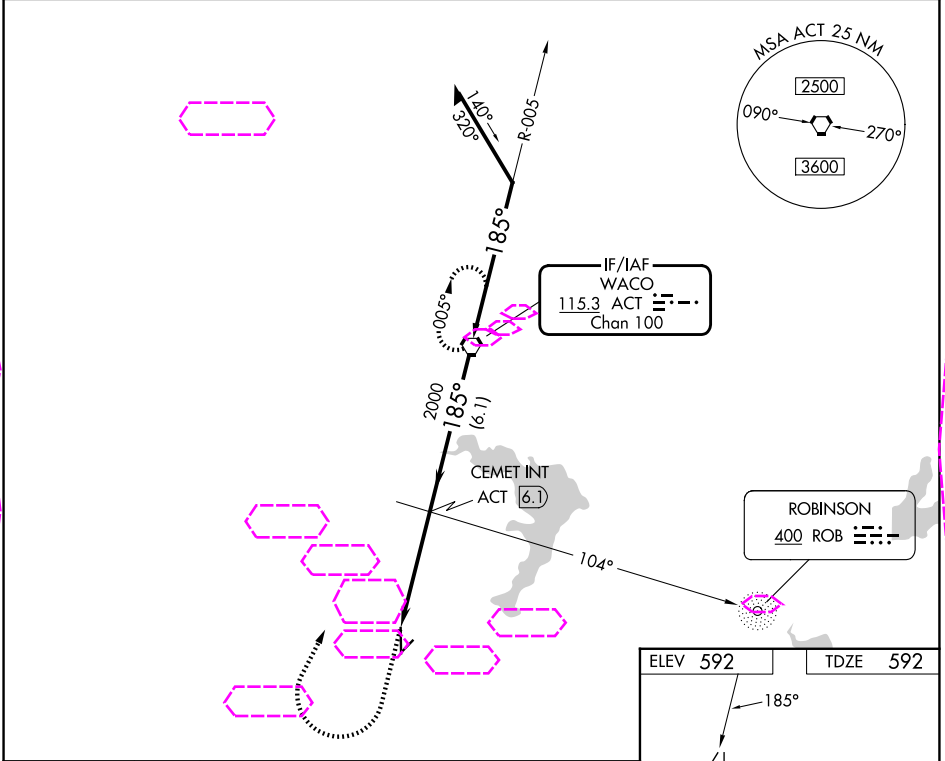
AL-5441 (FAA)




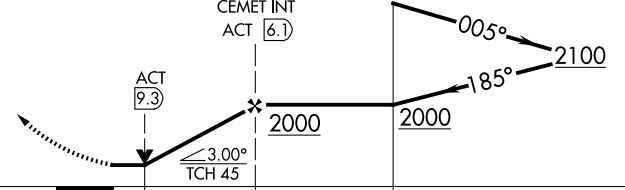
25219

VORTAC ACT	APP CRS	Rwy Ldg	5501
115.3	185°	TDZE	592
Chan 100		Apt Elev	592

VOR RWY 17
MC GREGOR EXEC (PWG)

ADF or DME required.		MISSED APPROACH: Climb to 1000 then climbing right turn to 4000 direct ACT VORTAC and hold, continue climb-in-hold to 4000.
ASR		
AWOS-3PT 135.525	WACO APP CON★ 127.65 352.0	UNICOM 123.05 (CTAF) 0



1000	4000	ACT	VGSI and descent angles not coincident (VGSI Angle 3.00/TCH 36).	
				
			Remain within 10 NM	
CATEGORY	A	B	C	D
S-17	980-1	388 (400-1)	980-1 $\frac{1}{8}$ 388 (400-1 $\frac{1}{8}$)	NA
CIRCLING	980-1 388 (400-1)	1060-1 468 (500-1)	1300-2 708 (800-2)	NA

ELEV 592	TDZE 592
185°	
17	
17-35	
FAF to MAP 4.3 NM	
Knots	60 90 120 150 180
Min:Sec	4:18 2:52 2:09 1:43 1:26

WACO, TEXAS
Amdt 11A 15JUN23

31°29'N-97°19'W

MC GREGOR EXEC (PWG)
VOR RWY 17

SC-3, 07 AUG 2025 to 04 SEP 2025

SC-3, 07 AUG 2025 to 04 SEP 2025