

WACO, TEXAS

AL-5441 (FAA)

24249

WAAS CH 87130 W35A	APP CRS 353°	Rwy Idg TDZE 580 Apt Elev 592
--	------------------------	---

RNAV (GPS) RWY 35

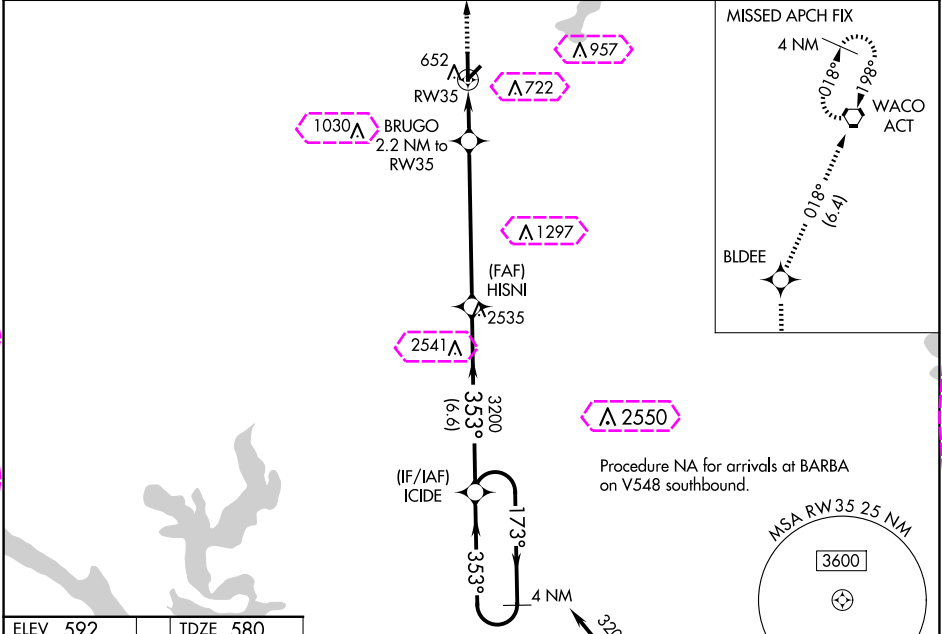
MC GREGOR EXEC (PWG)

RNP APCH - GPS.

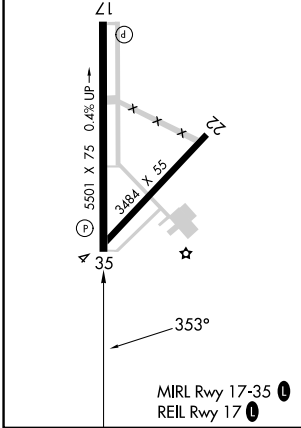
Baro-VNAV NA when using Waco Rgnl altimeter setting. For uncompensated Baro-VNAV systems, LNAV/VNAV NA below -16°C or above 54°C. When local altimeter setting not received, use Waco Rgnl altimeter setting and increase LPV DA to 861 feet; increase LNAV/VNAV DA to 861 feet; increase all MDAs 40 feet and LNAV visibility Cat B ¼ SM, and Circling visibility Cat B/C ¼ SM. Rwy 35 helicopter visibility reduction below ¾ SM NA.

MISSED APPROACH: Climb to 2500 direct BLDEE and on track 018° to ACT VORTAC and hold.

AWOS-3PT 135.525	WACO APP CON ★ 127.65 352.0	GCO 121.725	UNICOM 123.05 (CTAF) 0
----------------------------	---------------------------------------	-----------------------	---



ELEV 592	TDZE 580
-----------------	-----------------



2500	BLDEE	ACT	HISNI	ICIDE	4 NM Holding Pattern
↑	018°	⬡	3200		
BRUGO 2.2 NM to RW35		353°		173° 3200	
RW35		3200		GP 3.00° TCH 46	
2.2 NM		5.9 NM		6.6 NM	
CATEGORY	A	B	C	D	
LPV DA	830-¾	250 (300-¾)		NA	
LNAV/VNAV DA	830-¾	250 (300-¾)		NA	
LNAV MDA	960-1	380 (400-1)	960-1 ¾ 380 (400-1 ¾)	NA	
CIRCLING	1020-1 428 (500-1)	1060-1 468 (500-1)	1300-2 708 (800-2)	NA	

WACO, TEXAS
Amdt 1C 15JUN23

31°29'N-97°19'W

MC GREGOR EXEC (PWG)

RNAV (GPS) RWY 35

SC-3, 10 JUL 2025 to 07 AUG 2025

SC-3, 10 JUL 2025 to 07 AUG 2025

WACO, TEXAS

AL-5441 (FAA)

25219

WAAS CH 87130 W35A	APP CRS 353°	Rwy Ldg TDZE 580 Apt Elev 592
--	------------------------	---

RNAV (GPS) RWY 35

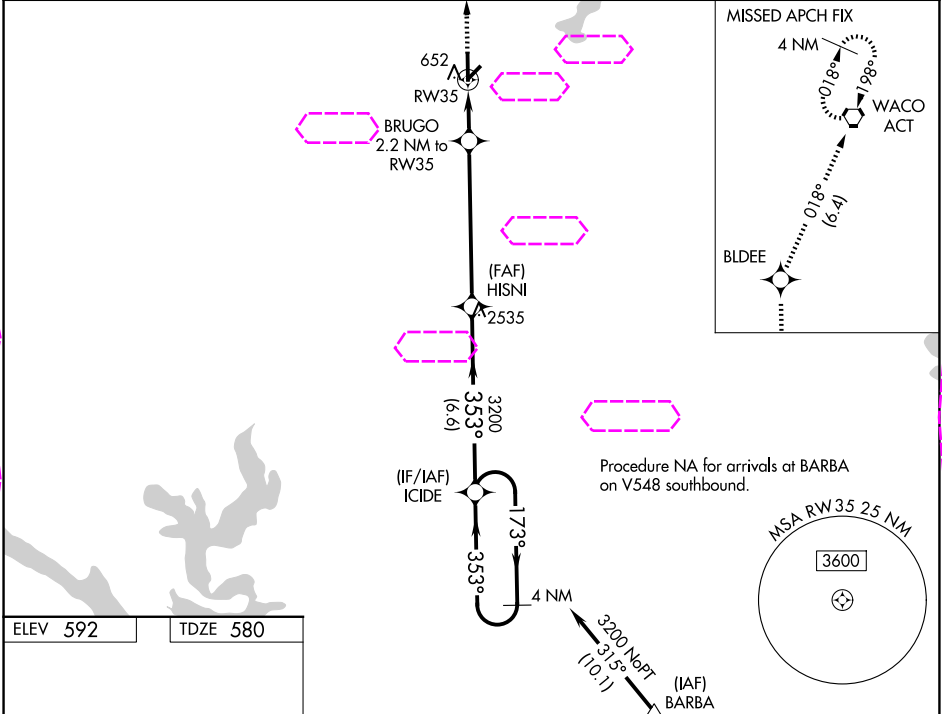
MC GREGOR EXEC (PWG)

RNP APCH - GPS.

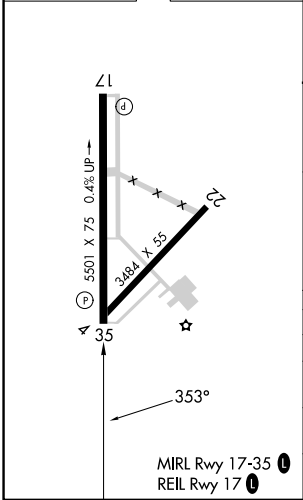
ASR Baro-VNAV NA when using Waco Rgnl altimeter setting. For uncompensated Baro-VNAV systems, LNAV/VNAV NA below -16°C or above 54°C. When local altimeter setting not received, use Waco Rgnl altimeter setting and increase LPV DA to 861 feet; increase LNAV/VNAV DA to 861 feet; increase all MDAs 40 feet and LNAV visibility Cat B ¼ SM, and Circling visibility Cat B/C ¼ SM. Rwy 35 helicopter visibility reduction below ¾ SM NA.

MISSED APPROACH: Climb to 2500 direct BLDEE and on track 018° to ACT VORTAC and hold.

AWOS-3PT 135.525	WACO APP CON★ 127.65 352.0	UNICOM 123.05 (CTAF)
----------------------------	--------------------------------------	--------------------------------



ELEV 592	TDZE 580
----------	----------



2500	BLDEE	ACT	HISNI	ICIDE	4 NM Holding Pattern
↑	018°	⬡	3200		
BRUGO 2.2 NM to RW35		353°		173°	3200
1300		3200		GP 3.00° TCH 46	
2.2 NM		5.9 NM		6.6 NM	
CATEGORY	A	B	C	D	
LPV DA	830-¾	250 (300-¾)		NA	
LNAV/VNAV DA	830-¾	250 (300-¾)		NA	
LNAV MDA	960-1	380 (400-1)	960-1½ 380 (400-1½)	NA	
CIRCLING	1020-1 428 (500-1)	1060-1 468 (500-1)	1300-2 708 (800-2)	NA	

WACO, TEXAS
Amdt 1C 15JUN23

31°29'N-97°19'W

MC GREGOR EXEC (PWG)

RNAV (GPS) RWY 35

SC-3, 07 AUG 2025 to 04 SEP 2025

SC-3, 07 AUG 2025 to 04 SEP 2025