

WACO, TEXAS

AL-5441 (FAA)

24249

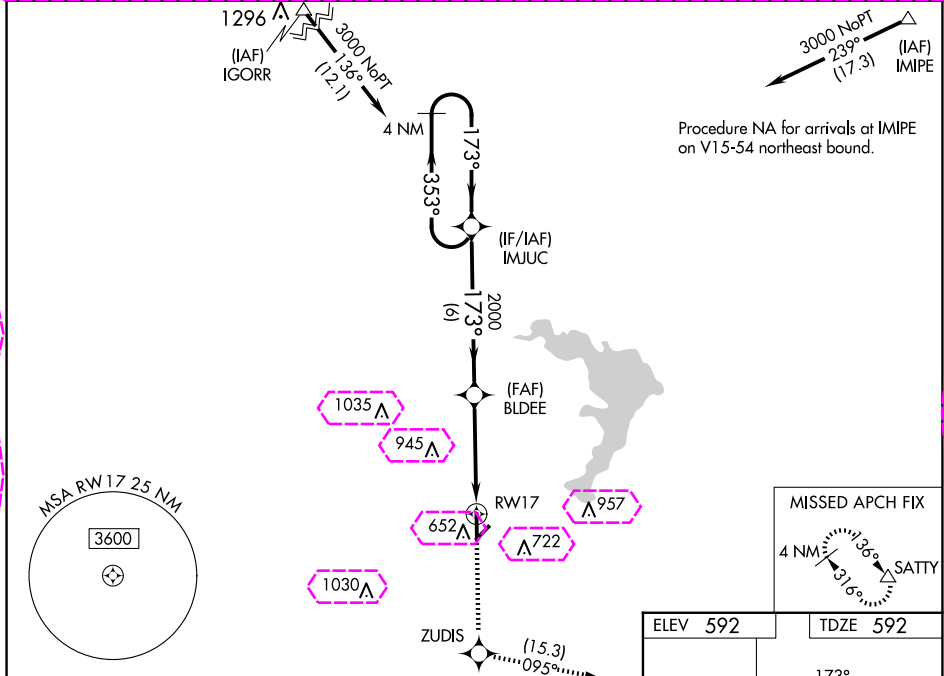
WAAS CH 63230 W17A	APP CRS 173°	Rwy Idg 5501 TDZE 592 Apt Elev 592
--	------------------------	---

RNAV (GPS) RWY 17

MC GREGOR EXEC (PWG)

RNP APCH - GPS.	Baro-VNAV NA when using Waco Rgnl altimeter setting. For uncompensated Baro-VNAV systems, LNAV/VNAV NA below -20°C or above 54°C. When local altimeter setting not received, use Waco Rgnl altimeter setting and increase LPV DA to 873 feet and all visibilities ½ SM; increase LNAV/VNAV DA to 873 feet and all visibilities ½ SM; increase all MDAs 40 feet and Circling visibility Cat C ¼ SM.	MISSED APPROACH: Climb to 2500 direct ZUDIS and on track 095° to SATTY and hold.
-----------------	--	---

AWOS-3PT 135.525	WACO APP CON ★ 127.65 352.0	GCO 121.725	UNICOM 123.05 (CTAF) 0
----------------------------	---------------------------------------	-----------------------	---



4 NM Holding Pattern

IMJUC

2500

ZUDIS

tr 095°

SATTY

3000

← 353°

173° →

BLDEE

2000

1.3 NM to RW17

RW17

GP 3.00° TCH 37

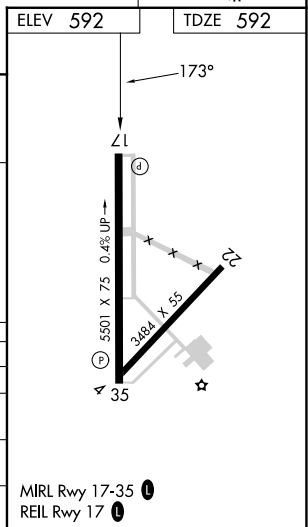
2000

6 NM

3 NM

1.3 NM

CATEGORY	A	B	C	D
LPV DA		842-3/4	250 (300-3/4)	NA
LNAV/VNAV DA		842-3/4	250 (300-3/4)	NA
LNAV MDA	1040-1	448 (500-1)	1040-1 3/8 448 (500-1 3/8)	NA
CIRCLING	1040-1 448 (500-1)	1060-1 468 (500-1)	1300-2 708 (800-2)	NA



WACO, TEXAS
Amdt 1C 15JUN23

31°29'N-97°19'W

MC GREGOR EXEC (PWG)
RNAV (GPS) RWY 17

SC-3, 10 JUL 2025 to 07 AUG 2025

SC-3, 10 JUL 2025 to 07 AUG 2025

WACO, TEXAS

AL-5441 (FAA)

25219

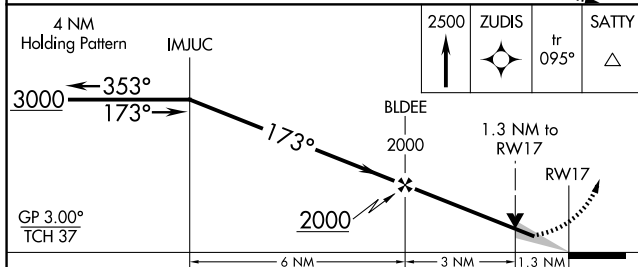
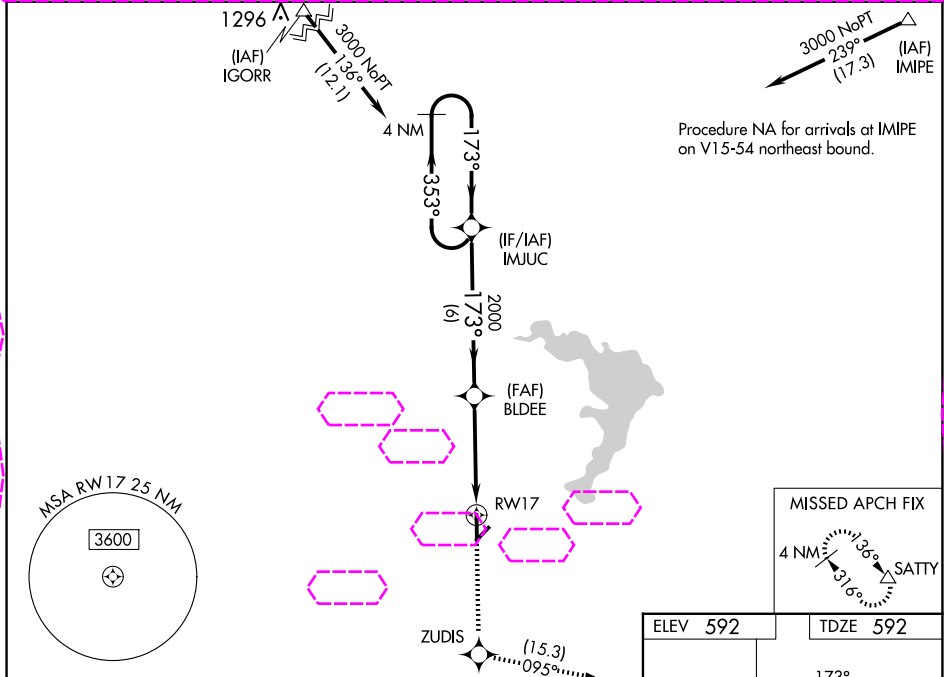
WAAS CH 63230 W17A	APP CRS 173°	Rwy Ldg TDZE 592 Apt Elev 592
--	------------------------	---

RNAV (GPS) RWY 17

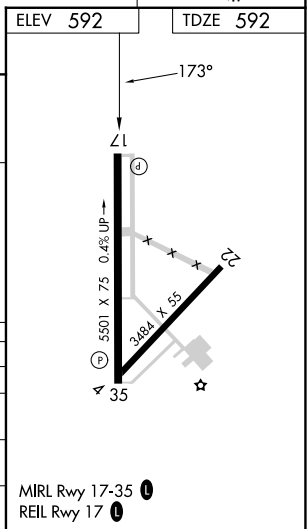
MC GREGOR EXEC (PWG)

RNP APCH - GPS.	Baro-VNAV NA when using Waco Rgnl altimeter setting. For uncompensated Baro-VNAV systems, LNAV/VNAV NA below -20°C or above 54°C. When local altimeter setting not received, use Waco Rgnl altimeter setting and increase LPV DA to 873 feet and all visibilities ½ SM; increase LNAV/VNAV DA to 873 feet and all visibilities ½ SM; increase all MDAs 40 feet and Circling visibility Cat C ¼ SM.	MISSED APPROACH: Climb to 2500 direct ZUDIS and on track 095° to SATTY and hold.
-----------------	--	---

AWOS-3PT 135.525	WACO APP CON★ 127.65 352.0	UNICOM 123.05 (CTAF) 0
----------------------------	--------------------------------------	----------------------------------



CATEGORY	A	B	C	D
LPV DA	842-¾	250 (300-¾)		NA
LNAV/VNAV DA	842-¾	250 (300-¾)		NA
LNAV MDA	1040-1	448 (500-1)	1040-1¾ 448 (500-1¾)	NA
CIRCLING	1040-1 448 (500-1)	1060-1 468 (500-1)	1300-2 708 (800-2)	NA



WACO, TEXAS
Amdt 1C 15JUN23

31°29'N-97°19'W

MC GREGOR EXEC (PWG)
RNAV (GPS) RWY 17

SC-3, 07 AUG 2025 to 04 SEP 2025

SC-3, 07 AUG 2025 to 04 SEP 2025