

OXFORD, OHIO

AL-5429 (FAA)

25163

WAAS CH 49228 W05A	APP CRS 050°	Rwy Ldg TDZE Apt Elev	3741 1041 1041
--	------------------------	-----------------------------	---

RNAV (GPS) RWY 5

MIAMI UNIVERSITY (OXD)

RNP APCH - GPS.

Baro-VNAV NA when using Covington altimeter setting. Straight-in/Circling Rwy 5 at night, operational VGSi required, remain on or above VGSi glidepath until threshold. Rwy 5 helicopter visibility reduction below 1 SM NA. When local altimeter setting not received, use Covington altimeter setting: increase LPV DA to 1393 and all visibilities $\frac{1}{8}$ SM; increase LNAV/VNAV DA to 1419 and all visibilities $\frac{1}{4}$ SM; increase all MDA 100 feet and visibility LNAV Cat C $\frac{3}{8}$ SM and Circling Cat C $\frac{1}{4}$ SM.

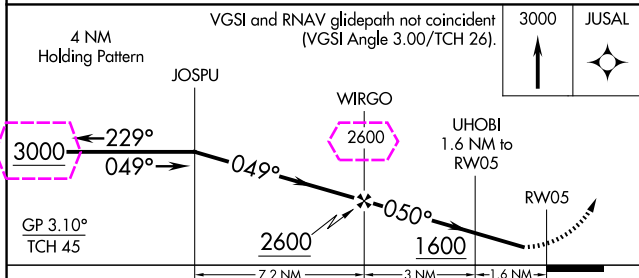
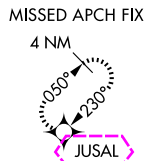
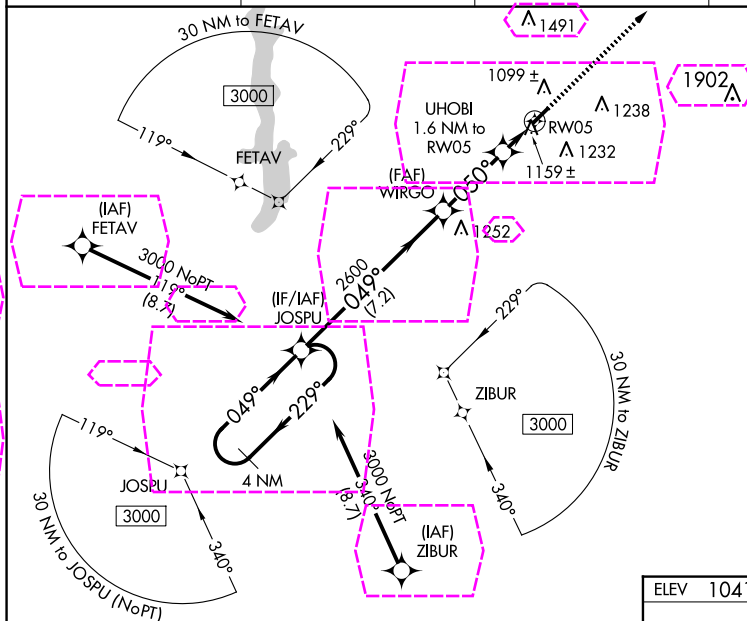
MISSED APPROACH:
Climb to 3000 direct
JUSAL and hold.

AWOS-3PT
118.625

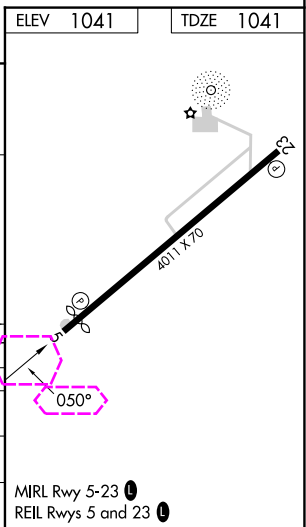
CINCINNATI APP CON
121.0 254.25

UNICOM
122.8 (CTAF)

122.9



CATEGORY	A	B	C	D
LPV DA	1304-1	263 (300-1)		NA
LNAV/VNAV DA	1330-1	289 (300-1)		NA
LNAV MDA	1420-1	379 (400-1)		NA
CIRCLING	1460-1 419 (500-1)	1600-1 559 (600-1)	1600-1½ 559 (600-1½)	NA



OXFORD, OHIO

Orig-B 06OCT22

39°30'N-84°47'W

RNAV (GPS) RWY 5

OXFORD, OHIO

AL-5429 (FAA)

25219

WAAS CH 49228 W05A	APP CRS 050°	Rwy Ldg TDZE Apt Elev	3741 1041 1041
--	------------------------	-----------------------------	---

RNAV (GPS) RWY 5

MIAMI UNIVERSITY (OXD)

RNP APCH - GPS.

Baro-VNAV NA when using CVG altimeter setting. Rwy 5 helicopter visibility reduction below 1 SM NA. For uncompensated Baro-VNAV systems, LNAV/VNAV NA below -17°C or above 54°C. When local altimeter setting not received, use CVG altimeter setting: increase LPV DA to 1393; increase LNAV/VNAV DA to 1419; increase all MDA 100 feet and visibility LNAV Cat C 3/8 SM.

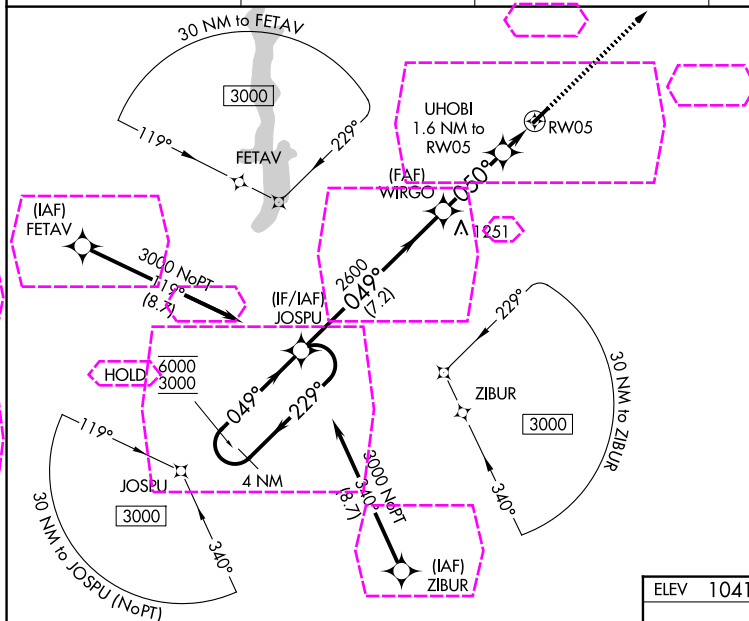
MISSED APPROACH:
Climb to 3000 direct
JUSAL and hold.

AWOS-3PT
118.625

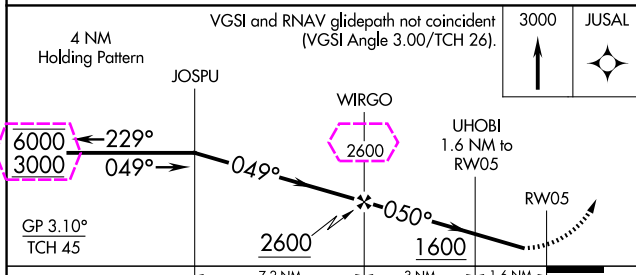
CINCINNATI APP CON
121.0 254.25

UNICOM
122.8 (CTAF)

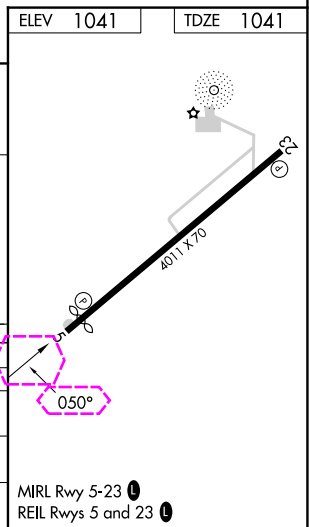
122.9



MISSED APCH FIX
4 NM



CATEGORY	A	B	C	D
LPV DA	1304-1	263 (300-1)		NA
LNAV/VNAV DA	1330-1	289 (300-1)		NA
LNAV MDA	1420-1	379 (400-1)		NA
CIRCLING	1460-1 419 (500-1)	1600-1 559 (600-1)	1600-1½ 559 (600-1½)	NA



OXFORD, OHIO

Orig-C 07AUG25

39°30'N-84°47'W

RNAV (GPS) RWY 5

MIRL Rwy 5-23
REIL Rws 5 and 23