

OXFORD, OHIO

AL-5429 (FAA)

25163

| | | |
|--|------------------------|---|
| WAAS CH 56528 W23A | APP CRS 230° | Rwy Ldg 3741 TDZE 1041 Apt Elev 1041 |
|--|------------------------|---|

RNAV (GPS) RWY 23

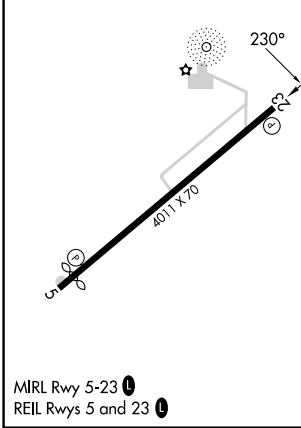
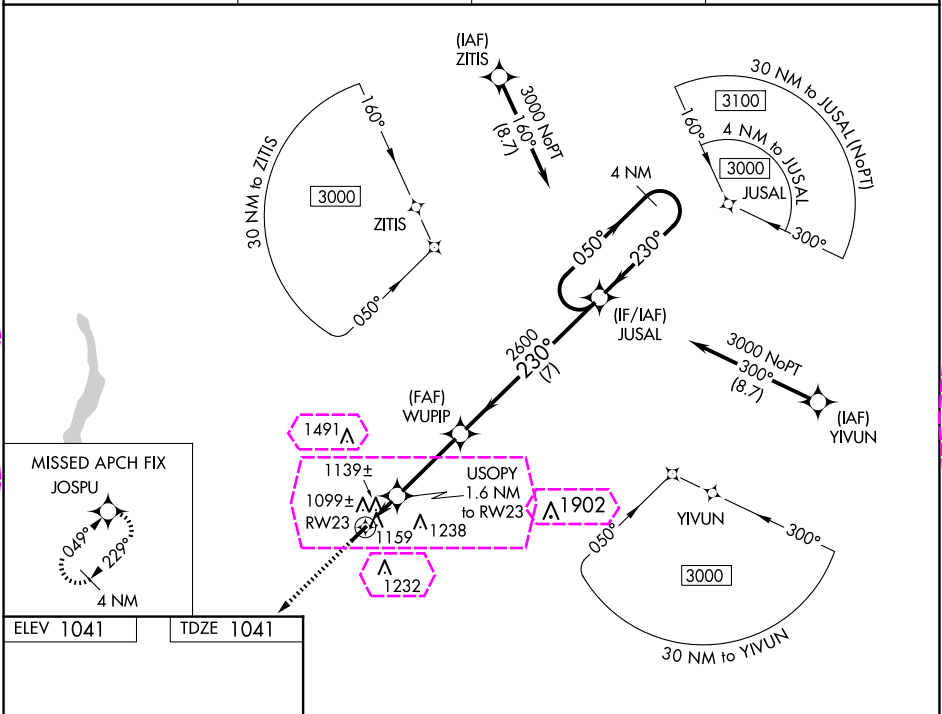
MIAMI UNIVERSITY (OXD)

RNP APCH - GPS.

⚠ **NA** When Circling to Rwy 5 at night, operational VGSI required, remain on or above VGSI glidepath until threshold. Rwy 23 helicopter visibility reduction below $\frac{3}{4}$ SM NA. When local altimeter setting not received, use Covington altimeter setting and increase all MDA 100 feet, increase LP Cat C visibility $\frac{3}{8}$ mile, increase LNAV and Circling Cat C visibility $\frac{1}{4}$ mile.

MISSED APPROACH:
Climb to 3000 direct JOSPU and hold.

| | | | |
|----------------------------|---|-------------------------------|-----------------------|
| AWOS-3PT 118.625 | CINCINNATI APP CON 121.0 254.25 | UNICOM 122.8 (CTAF) | 122.9 0 |
|----------------------------|---|-------------------------------|-----------------------|



| | | | |
|---|--------------------|--------------------|---|
| 3000 JUSAL VGSI and descent angles not coincident (VGSI Angle 3.00/TCH 28). | | | |
| 4 NM Holding Pattern | | | |
| USOPY 1.6 NM to RWY 23 | | | |
| RWY 23 | | | |
| 3.00° TCH 45 | | | |
| 2600 | | | |
| 1580 | | | |
| 1.6 NM 3.2 NM 7 NM | | | |
| CATEGORY | A | B | C |
| LP MDA | 1400-1 | 359 (400-1) | NA |
| LNAV MDA | 1420-1 | 379 (400-1) | 1420-1 $\frac{1}{8}$ 379 (400-1 $\frac{1}{8}$) |
| CIRCLING | 1460-1 419 (500-1) | 1600-1 559 (600-1) | 1600-1 $\frac{1}{2}$ 559 (600-1 $\frac{1}{2}$) |

OXFORD, OHIO

Orig-B 06OCT22

39°30'N-84°47'W

RNAV (GPS) RWY 23

OXFORD, OHIO

AL-5429 (FAA)

25219

| | | |
|--|------------------------|---|
| WAAS CH 56528 W23A | APP CRS 230° | Rwy Ldg 3741 TDZE 1041 Apt Elev 1041 |
|--|------------------------|---|

RNAV (GPS) RWY 23

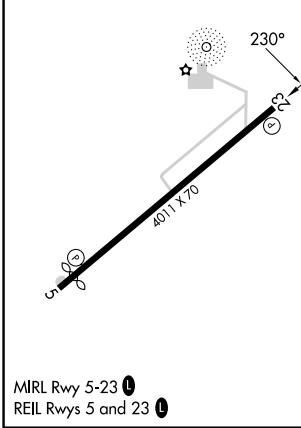
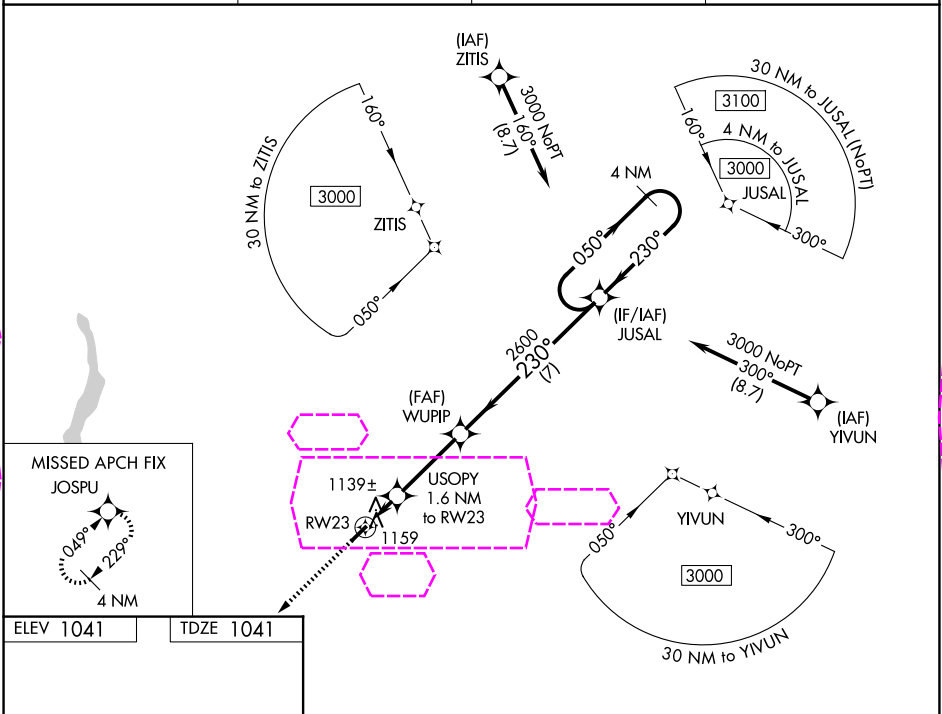
MIAMI UNIVERSITY (OXD)




RNP APCH - GPS.

⚠ **NA** When Circling to Rwy 5 at night, operational VGSI required, remain on or above VGSI glidepath until threshold. Rwy 23 helicopter visibility reduction below $\frac{3}{4}$ SM NA. When local altimeter setting not received, use Covington altimeter setting and increase all MDA 100 feet, increase LP Cat C visibility $\frac{3}{8}$ mile, increase LNAV and Circling Cat C visibility $\frac{1}{4}$ mile.

MISSED APPROACH:
Climb to 3000 direct JOSPU and hold.

| | | | |
|----------------------------|---|-------------------------------|-----------------------|
| AWOS-3PT 118.625 | CINCINNATI APP CON 121.0 254.25 | UNICOM 122.8 (CTAF) | 122.9 0 |
|----------------------------|---|-------------------------------|-----------------------|



| | | | | | | |
|---|-----------------------|--|--|------|----------------------------|-------------------------|
| 3000 ↑ | | JOSPU  | VGSI and descent angles not coincident (VGSI Angle 3.00/TCH 28). | | JUSAL | 4 NM Holding Pattern |
| RW23  | | USOPY 1.6 NM to RW23 | WUPIP  | 230° | 050° → 3000 ← 230° | |
| 1.6 NM | | 3.2 NM | 7 NM | | | |
| CATEGORY | A | B | C | D | | |
| LP MDA | 1400-1 359 (400-1) | | | NA | | |
| LNAV MDA | 1420-1 379 (400-1) | | 1420-1½ 379 (400-1½) | | NA | |
| CIRCLING | 1460-1 419 (500-1) | | 1600-1 559 (600-1) | | 1600-1½ 559 (600-1½) NA | |

OXFORD, OHIO

Orig-B 06OCT22

39°30'N-84°47'W

MIAMI UNIVERSITY (OXD)

RNAV (GPS) RWY 23

EC-2, 07 AUG 2025 to 04 SEP 2025

EC-2, 07 AUG 2025 to 04 SEP 2025