

ST. LOUIS, MISSOURI

AL-5400 (FAA)

22279

WAAS CH 61114 W08B	APP CRS 079°	Rwy Idg 7414 TDZE 462 Apt Elev 463
--	------------------------	---

RNAV (GPS) RWY 8R

SPIRIT OF ST LOUIS (SUS)

RNP APCH - GPS.

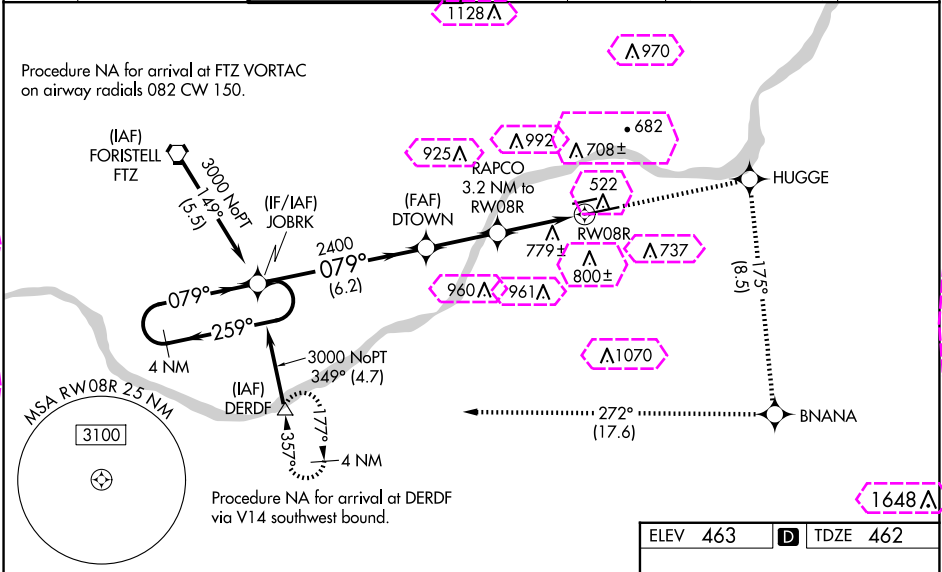
⚠ For uncompensated Baro-VNAV systems, LNAV/VNAV NA below -15°C or above 54°C. Baro-VNAV and VDP NA when using St Louis Lambert Intl altimeter setting. When local altimeter setting not received, use St Louis Lambert Intl altimeter setting and increase all DA 57 feet all MDA 60 feet, increase visibility LNAV/VNAV all Cats and LNAV Cats C/D ½ mile, and Circling Cat C ¼ mile. For inop MALSR, increase LNAV/VNAV all Cats visibility to 2½ mile and LNAV Cats C/D visibility to 1½ mile. For inop MALSR when using St Louis Lambert Intl altimeter setting, increase LNAV Cats C/D visibility to 1¾ mile.

#RVR 1800 authorized with use of FD or AP or HUD to DA, NA when using St Louis Lambert Intl altimeter setting.

MALSR

MISSED APPROACH:
Climb to 3000 direct HUGGE and right turn on track 175° to BNANA and right turn on track 272° to DERDF and hold.

ATIS 134.8	ST. LOUIS APP CON 126.5 254.3	SPIRIT TOWER* 124.75 (CTAF) 0 257.2	GND CON 121.7	CLNC DEL 133.1	ST. LOUIS CLNC DEL 121.7 (when tower closed)	UNICOM 122.95
----------------------	---	---	-------------------------	--------------------------	---	-------------------------



4 NM Holding Pattern		JOBRK				
			*LNAV only			
3000 ← 259° 079° →		DTOWN 2400	RAPCO 3.2 NM to RW08R	*1.6 NM to RW08R		
GP 3.00° TCH 55		2400	*1540	RW08R		
		6.2 NM	2.6 NM	1.6 NM	1.6 NM	
CATEGORY	A	B	C	D		
LPV DA#	662/24 200 (200-½)					
LNAV/ VNAV DA	1129-1⅞ 667 (700-1⅞)					
LNAV MDA	1040/24 578 (600-½)		1040-1¼ 578 (600-1¼)			
CIRCLING	1100-1 637 (700-1)	1140-1 677 (700-1)	1160-2 697 (700-2)	1360-3 897 (900-3)		

ELEV 463 D TDZE 462

MIRL Rwy 8L-26R 1
HIRL Rwy 8R-26L 1

ST. LOUIS, MISSOURI
Orig-D 06OCT22

38°40'N-90°39'W

SPIRIT OF ST LOUIS (SUS)
RNAV (GPS) RWY 8R

ST. LOUIS, MISSOURI

AL-5400 (FAA)

25219

WAAS CH 61114 W08B	APP CRS 079°	Rwy Ldg 7225 TDZE 462 Apt Elev 463
--	------------------------	---

RNAV (GPS) RWY 8R

SPIRIT OF ST LOUIS (SUS)

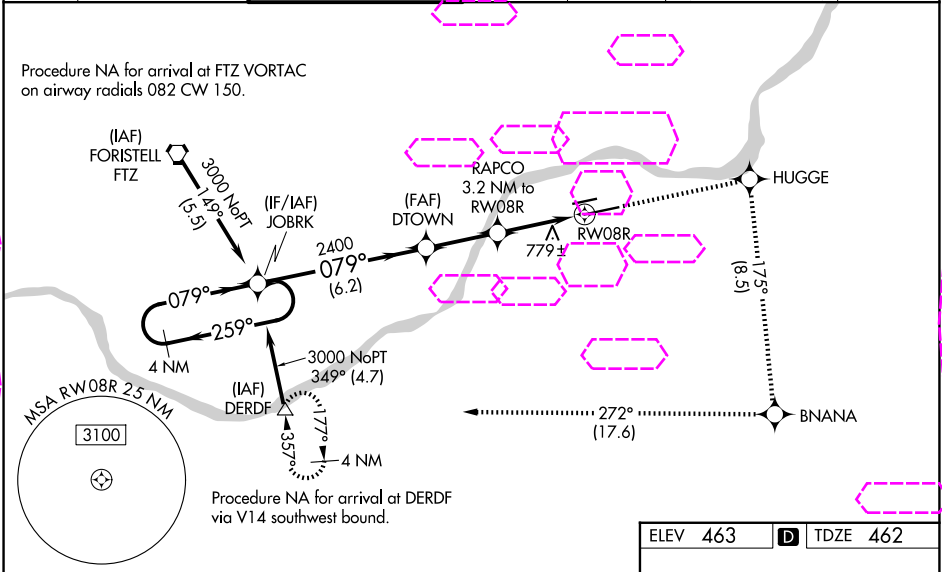
RNP APCH - GPS.

▼ For uncompensated Baro-VNAV systems, LNAV/VNAV NA below -15°C or above 54°C.
▲ Baro-VNAV and VDP NA when using St Louis Lambert Intl altimeter setting. When local altimeter setting not received, use St Louis Lambert Intl altimeter setting and increase all DA 57 feet all MDA 60 feet, increase visibility LNAV/VNAV all Cats and LNAV Cats C/D ½ mile, and Circling Cat C ¼ mile. For inop MALSR, increase LNAV/VNAV all Cats visibility to 2½ mile and LNAV Cats C/D visibility to 1½ mile. For inop MALSR when using St Louis Lambert Intl altimeter setting, increase LNAV Cats C/D visibility to 1¾ mile.
RVR 1800 authorized with use of FD or AP or HUD to DA, NA when using St Louis Lambert Intl altimeter setting.

MALSR

MISSED APPROACH:
Climb to 3000 direct HUGGE and right turn on track 175° to BNANA and right turn on track 272° to DERDF and hold.

ATIS 134.8	ST. LOUIS APP CON 126.5 254.3	SPIRIT TOWER* 124.75 (CTAF) 0 257.2	GND CON 121.7	CLNC DEL 133.1	ST. LOUIS CLNC DEL 121.7 (when tower closed)	UNICOM 122.95
----------------------	---	---	-------------------------	--------------------------	---	-------------------------



4 NM Holding Pattern		3000	HUGGE	BNANA	DERDF
		↑	tr 175°	tr 272°	△
3000 ← 259° 079° → 2400		DTOWN	RAPCO	*LNAV only	
		2400	3.2 NM to RWY 08R		
GP 3.00° TCH 55			*1.6 NM to RWY 08R		
		6.2 NM	2.6 NM	1.6 NM	1.6 NM
CATEGORY	A	B	C	D	
LPV DA#		662/24	200 (200-½)		
LNAV/VNAV DA		1129-1⅞	667 (700-1⅞)		
LNAV MDA	1040/24	578 (600-½)	1040-1¼	578 (600-1¼)	
CIRCLING	1100-1 637 (700-1)	1140-1 677 (700-1)	1160-2 697 (700-2)	1360-3 897 (900-3)	

ELEV 463 D TDZE 462

MIRL Rwy 8L-26R 1
HIRL Rwy 8R-26L 1

ST. LOUIS, MISSOURI
Orig-D 06OCT22

38°40'N-90°39'W

SPIRIT OF ST LOUIS (SUS)
RNAV (GPS) RWY 8R

NC-3, 07 AUG 2025 to 04 SEP 2025

NC-3, 07 AUG 2025 to 04 SEP 2025