

WAAS CH 97414 W26A	APP CRS 259°	Rwy Idg 5000 TDZE 463 Apt Elev 463
----------------------------------------	------------------------	---------------------------------------------------------------

RNAV (GPS) RWY 26R
SPIRIT OF ST LOUIS (SUS)

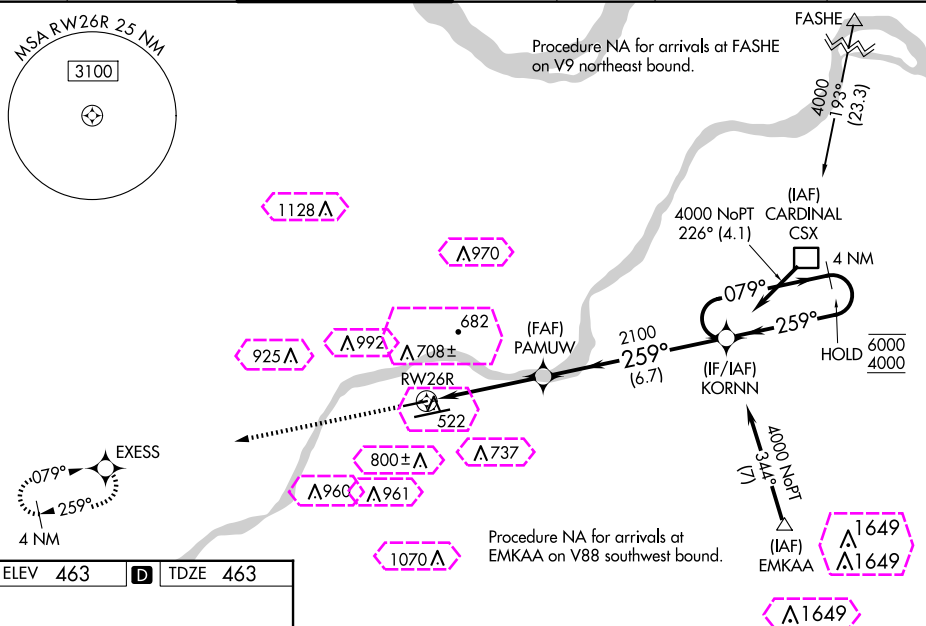
SPIRIT OF ST LOUIS (SUS)

RNP APCH - GPS.

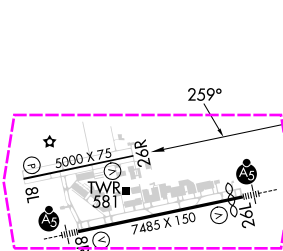
V Baro-VNAV and VDP NA when using St Louis Lambert Intl altimeter setting. Rwy 26R helicopter visibility reduction below $\frac{3}{4}$ SM NA. For uncompensated Baro-VNAV systems, LNAV/VNAV NA below -18°C or above 54°C. When local altimeter setting not received, use St Louis Lambert Intl altimeter setting: increase LPV DA to 798 feet and all visibilities $\frac{1}{2}$ SM, increase LNAV/VNAV DA to 823 feet and all visibilities $\frac{1}{2}$ SM; increase all MDA 60 feet.

MISSED APPROACH: Climb to 3000 direct EXESS and hold.

ATIS 134.8	ST. LOUIS APP CON 126.5 254.3	SPIRIT TOWER★ 124.75 (CTAF) 0 257.2	GND CON 121.7	CLNC DEL 133.1	ST. LOUIS CLNC DEL 121.7 (when tower closed)	UNICOM 122.95
----------------------	-----------------------------------------	-----------------------------------------------	-------------------------	--------------------------	-----------------------------------------------------------	-------------------------



ELEV 463	D	TDZE 463
----------	----------	----------



CATEGORY		A	B	C	D
LPV	DA	755-7%	292 (300-7%)	NA	
LNAV/ VNAV	DA	780-7%	317 (400-7%)	NA	
LNAV	MDA	940-1	477 (500-1)	NA	
CIRCLING		1100-1 637 (700-1)	1140-1 677 (700-1)	NA	

MIRL Rwy 8L-26R **L**HIRL Rwy 8R-26L **L**

ST. LOUIS, MISSOURI

Amdt 1B 25JAN24

SPIRIT OF ST LOUIS (SUS)

38°40'N-90°39'W

RNAV (GPS) RWY 26R

ST. LOUIS, MISSOURI

AL-5400 (FAA)

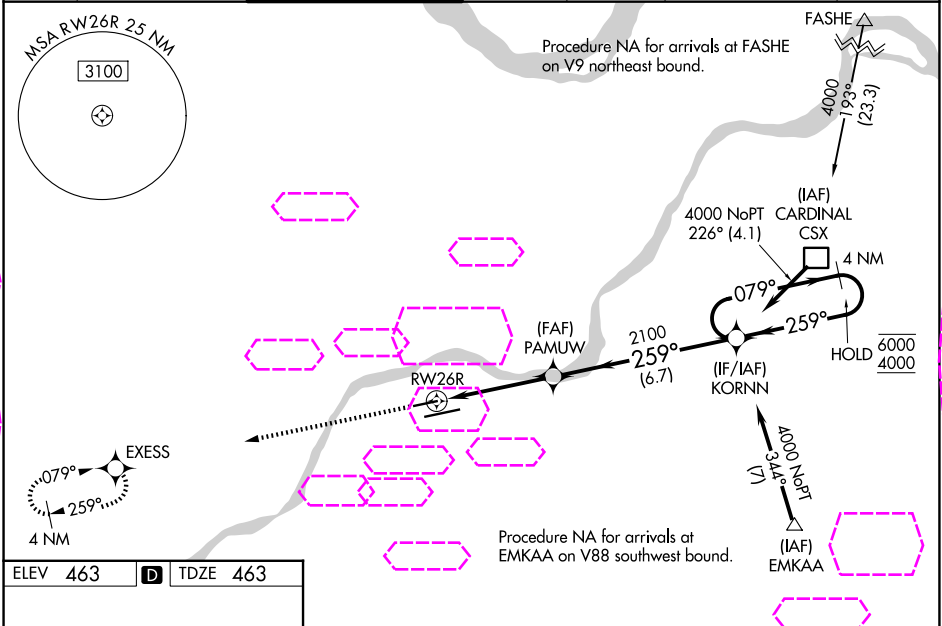
25219

WAAS CH 97414 W26A	APP CRS 259°	Rwy Ldg 5000 TDZE 463 Apt Elev 463
----------------------------------------	------------------------	---------------------------------------------------------------

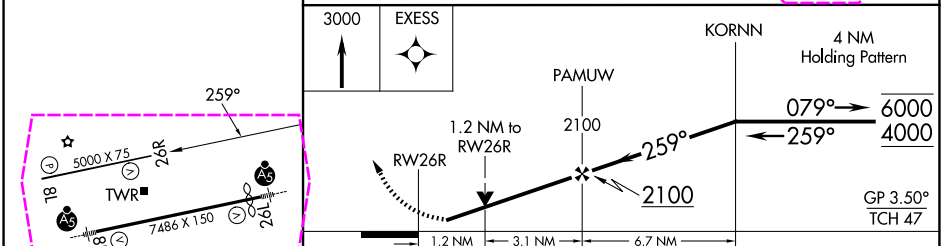
RNAV (GPS) RWY 26R

SPIRIT OF ST LOUIS (SUS)

RNP APCH - GPS.					MISSED APPROACH: Climb to 3000 direct EXESS and hold.	
<div><div><div>▼</div><div>▲</div></div><div>Baro-VNAV and VDP NA when using St Louis Lambert Intl altimeter setting. Rwy 26R helicopter visibility reduction below ¾ SM NA. For uncompensated Baro-VNAV systems, LNAV/VNAV NA below -18°C or above 54°C. When local altimeter setting not received, use St Louis Lambert Intl altimeter setting: increase LPV DA to 798 feet and all visibilities ½ SM, increase LNAV/VNAV DA to 823 feet and all visibilities ½ SM; increase all MDAs 60 feet.</div></div>						
ATIS 134.8	ST. LOUIS APP CON 126.5 254.3	SPIRIT TOWER★ 124.75 (CTAF) 0 257.2	GND CON 121.7	CLNC DEL 133.1	ST. LOUIS CLNC DEL 121.7 (when tower closed)	UNICOM 122.95



ELEV 463	D	TDZE 463
-----------------	----------	-----------------



CATEGORY	A	B	C	D
LPV DA	755-7/8 292 (300-7/8)		NA	
LNAV/VNAV DA	780-7/8 317 (400-7/8)		NA	
LNAV MDA	940-1 477 (500-1)		NA	
CIRCLING	1100-1 637 (700-1)	1140-1 677 (700-1)	NA	

MIRL Rwy 8L-26R
HIRL Rwy 8R-26L

ST. LOUIS, MISSOURI
Amdt 1B 25JAN24

38°40'N-90°39'W

SPIRIT OF ST LOUIS (SUS)

RNAV (GPS) RWY 26R

NC-3, 07 AUG 2025 to 04 SEP 2025

NC-3, 07 AUG 2025 to 04 SEP 2025