

ST. LOUIS, MISSOURI

AL-5400 (FAA)

24025

WAAS CH <b>81914</b> <b>W26B</b>	APP CRS <b>259°</b>	Rwy Idg <b>7004</b> TDZE <b>462</b> Apt Elev <b>463</b>
--	------------------------	---

# RNAV (GPS) RWY 26L


SPIRIT OF ST LOUIS (SUS)

RNP APCH - GPS.

**⚠** Baro-VNAV and VDP NA when using St Louis Lambert Intl altimeter setting. For uncompensated Baro-VNAV systems, LNAV/VNAV NA below -18°C or above 54°C. For inop ALS when using St Louis Lambert Intl altimeter setting, increase LNAV/VNAV all Cats visibility to 1 3/8 SM and LNAV Cat C and D to 1 3/8 SM. When local altimeter setting not received, use St Louis Lambert Intl altimeter setting: increase LPV DA to 705 feet; increase LNAV/VNAV DA to 959 feet and all visibilities to RVR 5000; increase all MDAs 60 feet and LNAV visibility Cat C/D to RVR 5500 and Circling visibility Cat C 1/4 SM.

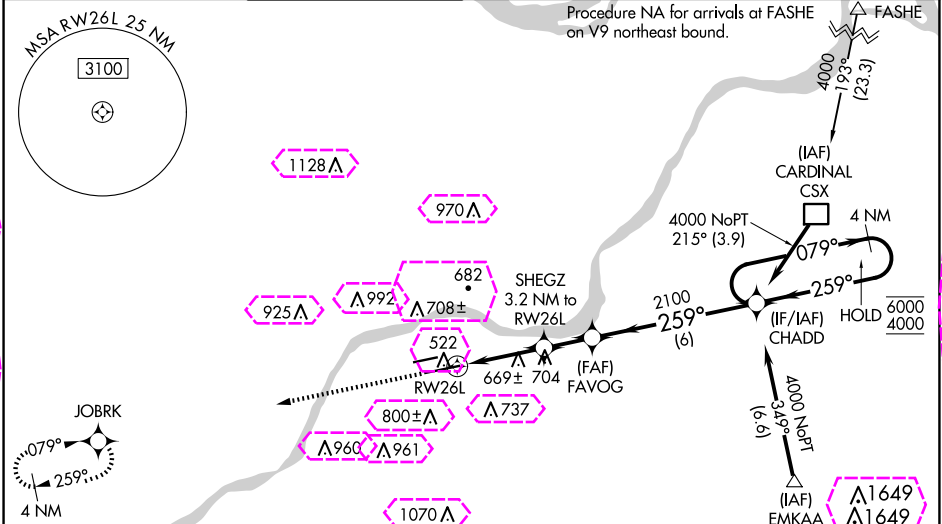
\*RVR 1800 authorized with use of FD or AP or HUD to DA (NA when using St Louis Lambert Intl altimeter setting).

MALSRL

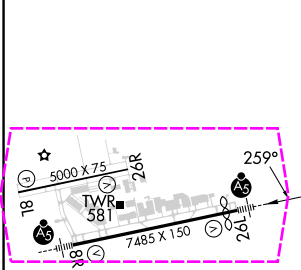


MISSED APPROACH:  
Climb to 3000 direct  
JOBK and hold.

ATIS <b>134.8</b>	ST. LOUIS APP CON <b>126.5 254.3</b>	SPIRIT TOWER* <b>124.75</b> (CTAF) <b>0 257.2</b>	GND CON <b>121.7</b>	CLNC DEL <b>133.1</b>	ST. LOUIS CLNC DEL <b>121.7</b> (when tower closed)	UNICOM <b>122.95</b>
----------------------	---	--	-------------------------	--------------------------	---	-------------------------



ELEV 463	<b>D</b>	TDZE 462
----------	----------	----------



3000		JOBK	FAVOG		CHADD	4 NM
			SHEGZ 3.2 NM to RWY 26L			Holding Pattern
			1.3 NM to RWY 26L			
			1540		2100	
			1.3 NM		1.9 NM	1.8 NM
					6 NM	
CATEGORY	A		B		C	
LPV DA*			662/24		200 (200-1/2)	
LNAV/VNAV DA			916/45		454 (500-7/8)	
LNAV MDA	920/24		458 (500-1/2)		920/45 458 (500-7/8)	
<b>CIRCLING</b>	1100-1 637 (700-1)		1140-1 677 (700-1)		1180-2 717 (800-2)	
					1360-3 897 (900-3)	

MIRL Rwy 8L-26R **1**  
HIRL Rwy 8R-26L **1**

ST. LOUIS, MISSOURI  
Amdt 1A 25JAN24

38°40'N-90°39'W

# SPIRIT OF ST LOUIS (SUS)

# RNAV (GPS) RWY 26L

NC-3, 10 JUL 2025 to 07 AUG 2025

NC-3, 10 JUL 2025 to 07 AUG 2025

