

NC-3, 10 JUL 2025 to 07 AUG 2025

ST. LOUIS, MISSOURI

AL-5400 (FAA)

25219

LOC I-SUS 110.55	APP CRS 079°	Rwy Ldg 7225 TDZE 462 Apt Elev 463
----------------------------	------------------------	---

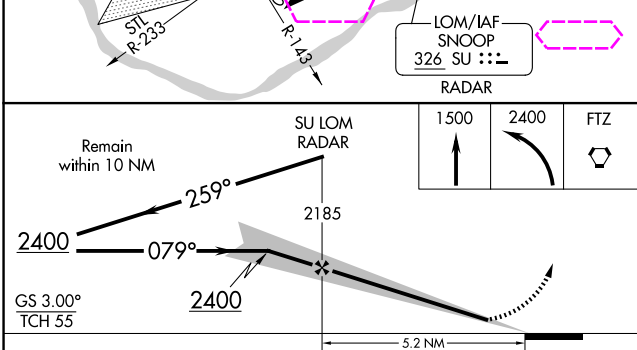
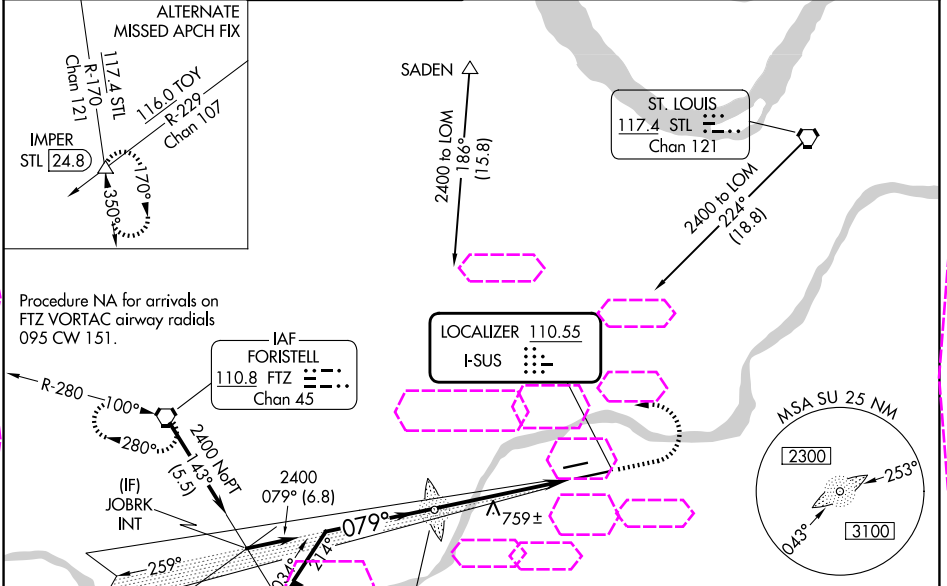
ILS or LOC RWY 8R

SPIRIT OF ST LOUIS (SUS)

When local alimeter setting not received, use St Louis Lambert Intl alimeter setting and increase all DA to 719 feet, all MDA 60 feet, increase S-LOC 8R Cats C/D to RVR 5000 and Circling Cat C visibility ¼ mile. For inop MALSRR, increase S-LOC 8R Cats C/D visibility to RVR 6000. For inop MALSRR when using St Louis Lambert Intl alimeter setting, increase S-LOC 8R Cats C/D visibility to 1½ mile.
* RVR 1800 authorized with the use of FD or AP or HUD to DA (NA when using St Louis Lambert Intl alimeter setting).

MALSRR
MISSED APPROACH: Climb to 1500 then climbing left turn to 2400 direct FTZ VORTAC and hold.

ATIS 134.8	ST. LOUIS APP CON 126.5 254.3	SPIRIT TOWER* 124.75 (CTAF) 0 257.2	GND CON 121.7	CLNC DEL 133.1	ST. LOUIS CLNC DEL 121.7 (when tower closed)	UNICOM 122.95
----------------------	---	--	-------------------------	--------------------------	---	-------------------------



ELEV 463	TDZE 462
MIRL Rwy 8L-26R	
MIRL Rwy 8R-26L	
FAF to MAP 5.2 NM	
Knots	60 90 120 150 180
Min:Sec	5:12 3:28 2:36 2:05 1:44

CATEGORY	A	B	C	D
S-ILS 8R *	662/24 200 (200-½)			
S-LOC 8R	880/24	418 (500-½)	880/40	418 (500-¾)
CIRCLING	1100-1 637 (700-1)	1140-1 677 (700-1)	1160-2 697 (700-2)	1360-3 897 (900-3)

ST. LOUIS, MISSOURI
Amdt 14C 06OCT22

38°40'N-90°39'W

SPIRIT OF ST LOUIS (SUS)
ILS or LOC RWY 8R

NC-3, 07 AUG 2025 to 04 SEP 2025

NC-3, 07 AUG 2025 to 04 SEP 2025