

GRAND CANYON, ARIZONA

AL-5381 (FAA)

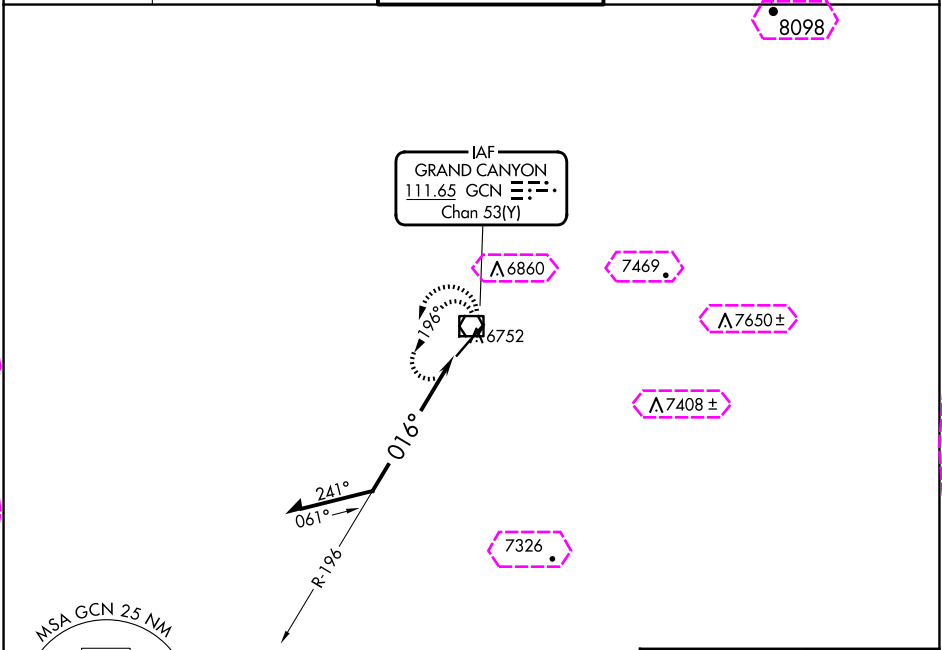
23334

VOR/DME GCN 111.65 Chan 53 (Y)	APP CRS 016°	Rwy Idg 8999 TDZE 6556 Apt Elev 6609
--	------------------------	---

VOR RWY 3
GRAND CANYON NTL PARK (GCN)

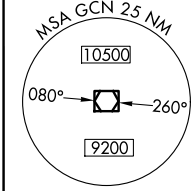
▼ ▲ Rwy 3 helicopter visibility reduction below ¾ SM NA.	MISSED APPROACH: Climb to 9100 in GCN VOR/DME holding pattern.
---	--

ATIS 124.3	LOS ANGELES CENTER 124.85 319.2	CANYON TOWER * 119.0 (CTAF) 0	GND CON 121.9	UNICOM 122.95
----------------------	---	--	-------------------------	-------------------------

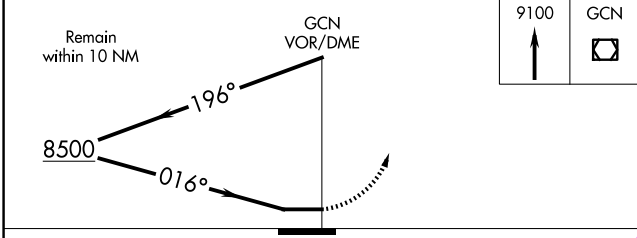


SW-4, 10 JUL 2025 to 07 AUG 2025

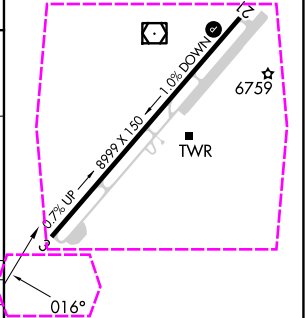
SW-4, 10 JUL 2025 to 07 AUG 2025



Descend in GCN VOR/DME holding pattern to 11000 before commencing procedure turn.



ELEV 6609	D TDZE 6556
-----------	--------------------



CATEGORY	A	B	C	D
S-3	7180-1 624 (600-1)	7180-1¾ 624 (600-1¾)	7180-1¾ 624 (600-1¾)	7180-1¾ 624 (600-1¾)
CIRCLING	7180-1 571 (600-1)	7200-1 591 (600-1)	7280-2 671 (700-2)	7620-3 1011 (1100-3)

GRAND CANYON, ARIZONA
Amdt 6 27APR17

35°57'N-112°09'W

GRAND CANYON NTL PARK (GCN)
VOR RWY 3

REIL Rwy 21
MIRL Rwy 3-21 **0**

GRAND CANYON, ARIZONA

AL-5381 (FAA)

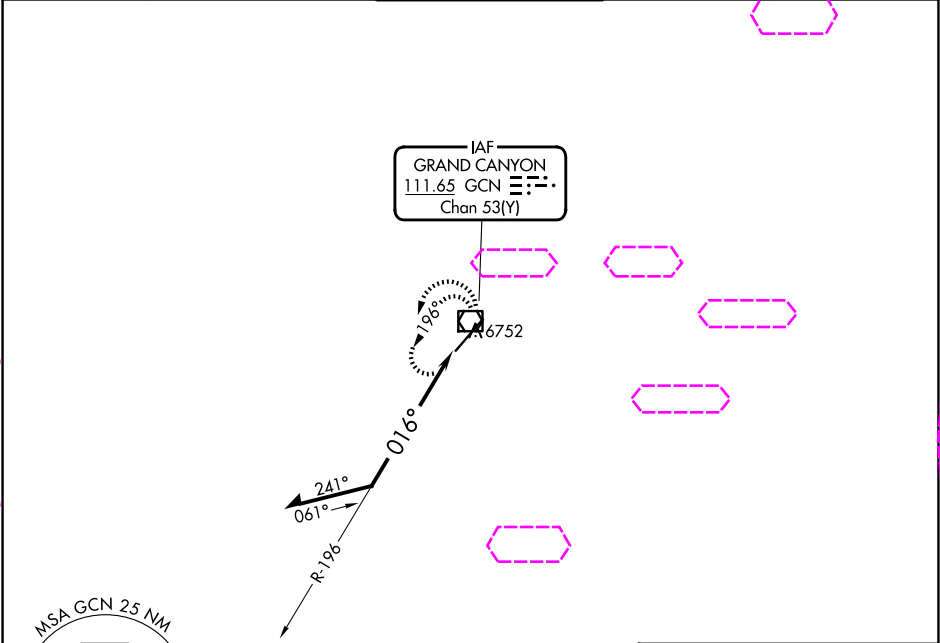
25219

VOR/DME GCN 111.65 Chan 53(Y)	APP CRS 016°	Rwy Ldg 8999 TDZE 6556 Apt Elev 6609
---	------------------------	---

VOR RWY 3
GRAND CANYON NTL PARK (GCN)

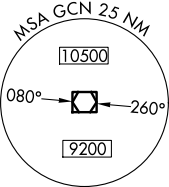
▼ ▲ Rwy 3 helicopter visibility reduction below ¾ SM NA.	MISSED APPROACH: Climb to 9100 in GCN VOR/DME holding pattern.
---	--

ATIS 124.3	LOS ANGELES CENTER 124.85 319.2	CANYON TOWER * 119.0 (CTAF) 0	GND CON 121.9	UNICOM 122.95
----------------------	---	---	-------------------------	-------------------------



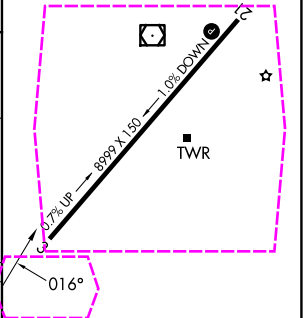
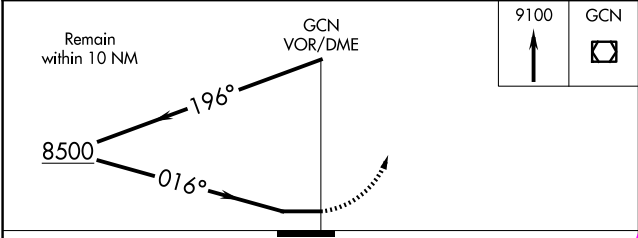
SW-4, 07 AUG 2025 to 04 SEP 2025

SW-4, 07 AUG 2025 to 04 SEP 2025



Descend in GCN VOR/DME holding pattern to 11000 before commencing procedure turn.

ELEV 6609	D	TDZE 6556
-----------	----------	-----------



CATEGORY	A	B	C	D
S-3	7180-1 624 (600-1)	7180-1 624 (600-1)	7180-1 624 (600-1)	7180-1 624 (600-1)
CIRCLING	7180-1 571 (600-1)	7200-1 591 (600-1)	7280-2 671 (700-2)	7620-3 1011 (1100-3)

GRAND CANYON, ARIZONA
Amd 6 27APR17

35°57'N-112°09'W

GRAND CANYON NTL PARK (GCN)
VOR RWY 3

REIL Rwy 21
MIRL Rwy 3-21