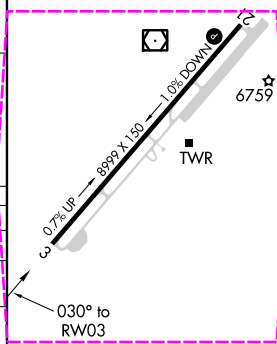
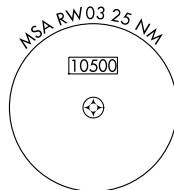


RNAV (GPS) RWY 3
GRAND CANYON NTL PARK (GCN)

MISSED APPROACH: Climb to 7000 then climbing left turn to 9000 direct CARMS and hold.

UNICOM
122.95

REIL Rwy 21
MIRL Rwy 3-21 **L**

GRAND CANYON NTL PARK (GCN)
RNAV (GPS) RWY 3

GRAND CANYON, ARIZONA

AL-5381 (FAA)

25219

WAAS CH 86340 W03A	APP CRS 030°	Rwy Ldg TDZE 6556 Apt Elev 6609
--	------------------------	---

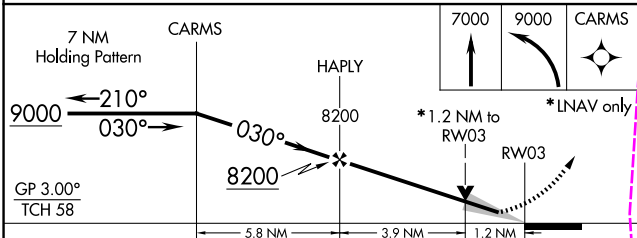
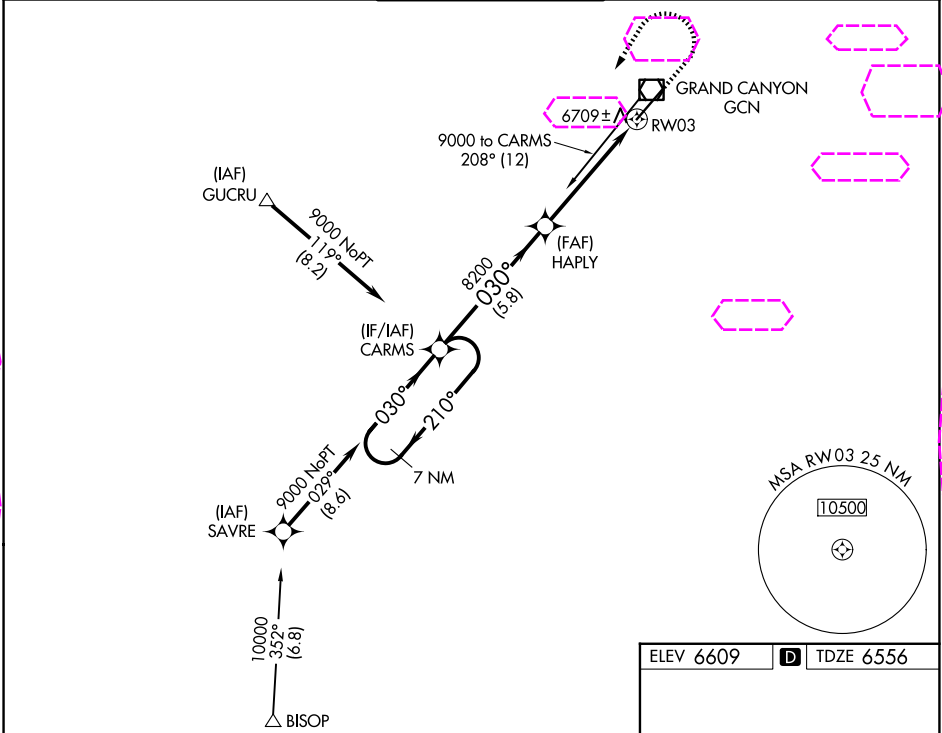
RNAV (GPS) RWY 3

GRAND CANYON NTL PARK (GCN)

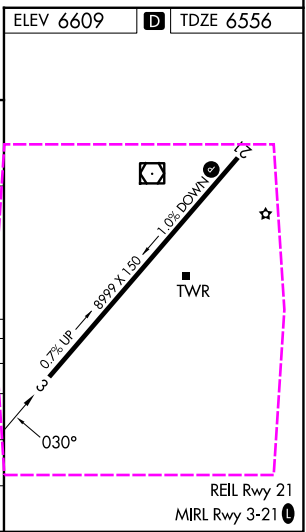
⚠ For uncompensated Baro-VNAV systems, LNAV/VNAV NA below -12°C (11°F) or above 44°C (111°F).
DME/DME RNP-0.3 NA.

MISSED APPROACH: Climb to 7000 then climbing left turn to 9000 direct CARMS and hold.

ATIS 124.3	LOS ANGELES CENTER 124.85 319.2	CANYON TOWER* 119.0 (CTAF) 0	GND CON 121.9	UNICOM 122.95
----------------------	---	--	-------------------------	-------------------------



CATEGORY	A	B	C	D
LPV DA		6797-3/4	241 (200-3/4)	
LNAV/VNAV DA		6981-1 1/2	425 (400-1 1/2)	
LNAV MDA	6960-1	404 (400-1)	6960-1 1/8	404 (400-1 1/8)
CIRCLING	7140-1 1/4 531 (600-1 1/4)	7200-1 1/2 591 (600-1 1/2)	7280-3 671 (700-3)	7620-3 1011 (1100-3)



GRAND CANYON, ARIZONA
Amdt 1 27APR17

35°57'N-112°09'W

GRAND CANYON NTL PARK (GCN)
RNAV (GPS) RWY 3

SW-4, 07 AUG 2025 to 04 SEP 2025

SW-4, 07 AUG 2025 to 04 SEP 2025