

GRAND CANYON, ARIZONA

AL-5381 (FAA)

23334

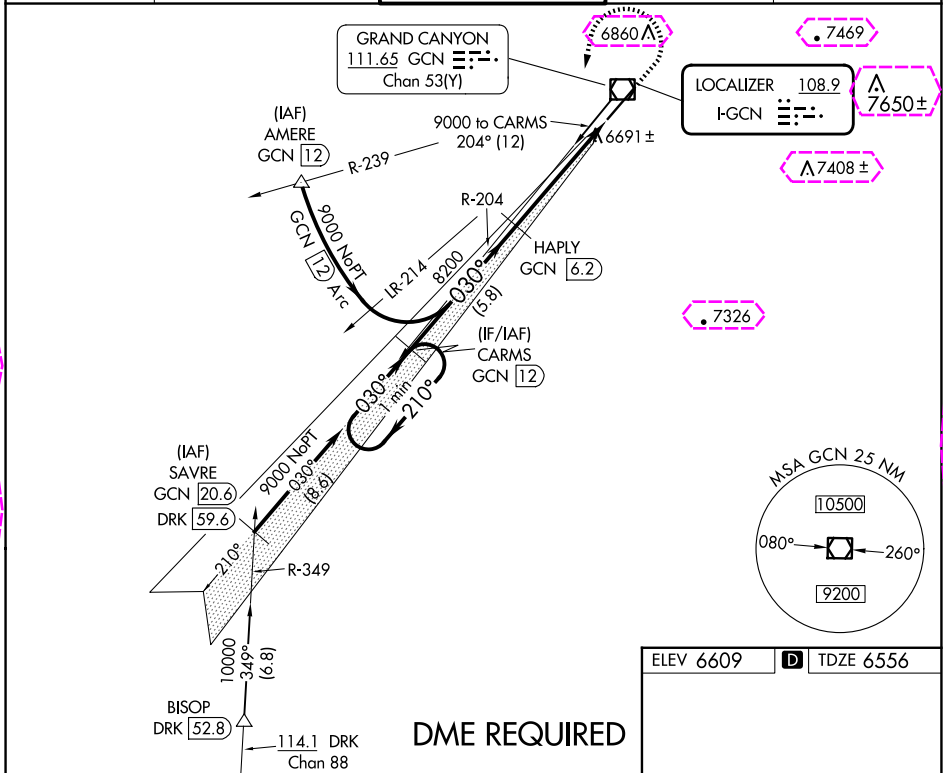
LOC I-GCN 108.9	APP CRS 030°	Rwy Idg 8999 TDZE 6556 Apt Elev 6609
---------------------------	------------------------	--

ILS or LOC RWY 3

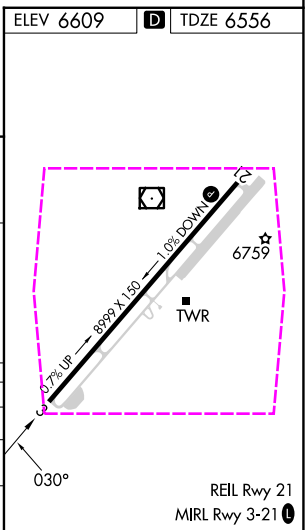
GRAND CANYON NTL PARK (GCN)

⚠ ⚠	DME from GCN VOR/DME. Simultaneous reception of I-GCN and GCN DME required. DME required.	MISSED APPROACH: Climb to 7000 then climbing left turn to 9000 on heading 180° and on GCN VOR/DME R-204 direct CARMS/GCN 12 DME and hold.
----------------------	---	---

ATIS 124.3	LOS ANGELES CENTER 124.85 319.2	CANYON TOWER* 119.0 (CTAF) 0	GND CON 121.9	UNICOM 122.95
----------------------	---	--	-------------------------	-------------------------



One Minute Holding Pattern		CARMS GCN 12	HAPLY GCN 6.2	7000 ↑	9000 hdg 180°	GCN R-204	CARMS GCN 12
9000	← 210° 030° →	030°	8200	5.8 NM	3.9 NM	1.2 NM	* LOC only.
GS 3.00° TCH 58					* GCN 2.3	GCN 1.2	
CATEGORY	A	B	C	D			
S-ILS 3	6795-¾ 239 (200-¾)						
S-LOC 3	6960-1 404 (400-1)		6960-1⅛ 404 (400-1⅛)				
CIRCLING	7140-1 531 (600-1)	7200-1 591 (600-1)	7280-2 671 (700-2)	7620-3 1011 (1100-3)			



LOC I-GCN 108.9	APP CRS 030°	Rwy Ldg TDZE Apt Elev	8999 6556 6609
---------------------------	------------------------	-----------------------------	---

ILS or LOC RWY 3
GRAND CANYON NTL PARK (GCN)

T DME from GCN VOR/DME. Simultaneous reception
A of I-GCN and GCN DME required.
DME required.

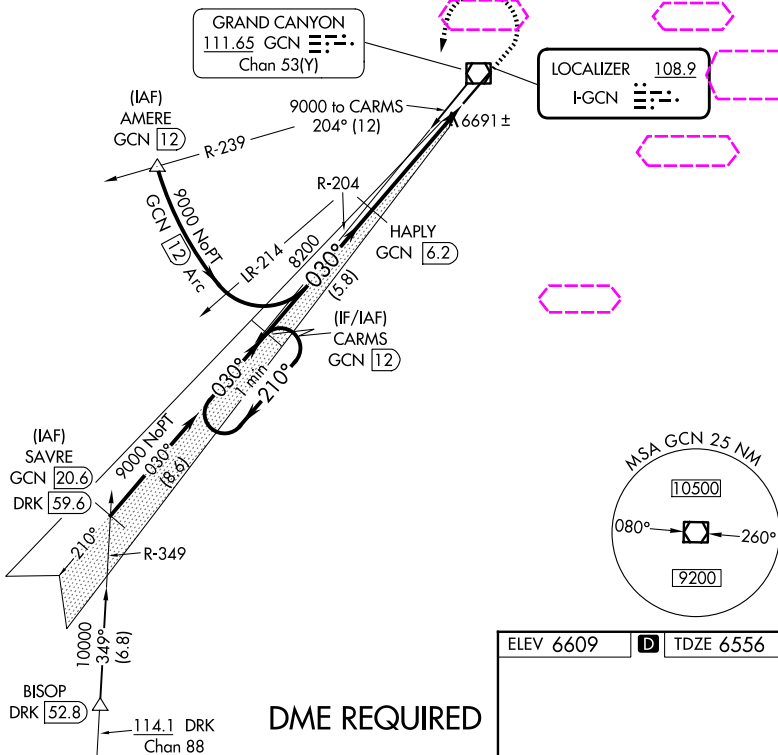
MISSED APPROACH: Climb to 7000 then climbing left turn to 9000 on heading 180° and on GCN VOR/DME R-204 direct CARMS/GCN 12 DME and hold.

ATIS
124.3

LOS ANGELES CENTER
124.85 319.2

CANYON TOWER ★
119.0 (CTAF) L

GND CON
121.9

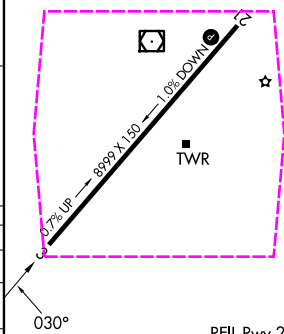
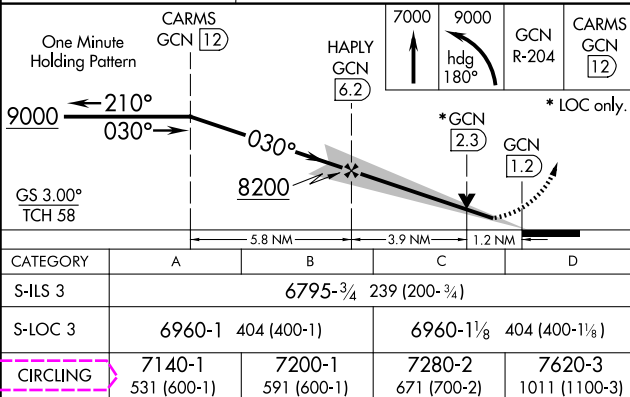
UNICOM
122.95

DME REQUIRED

ELEV 6609	D	TDZE 6556
-----------	----------	-----------

D

TDZE 6556



REIL Rwy 21
MIRL Rwy 3-21 **L**

GRAND CANYON, ARIZONA
Amdt 1 27APR17

35°57'N-112°09'W

GRAND CANYON NTL PARK (GCN)
ILS or LOC RWY 3