

WAAS CH 99729 W32A	APP CRS 323°	Rwy Ldg 4755 TDZE 23 Apt Elev 23
--	------------------------	---

RNAV (GPS) RWY 32
TREASURE COAST INTL (FPR)

⚠ For uncompensated Baro-VNAV systems, LNAV/VNAV NA below -15C (5°F) or above 43°C (109°F). DME/DME RNP-0.3 NA. When local altimeter setting not received, use Vero Beach altimeter setting and increase LPV data to 325, LNAV/VNAV data to 329 feet and MDA 40 feet; increase LPV all Cats, LNAV/VNAV all Cats, and LNAV Cats C/D visibility ½ SM. Increase Circling visibility Cat C/D ¼ SM. Baro-VNAV NA when using Vero Beach altimeter setting.

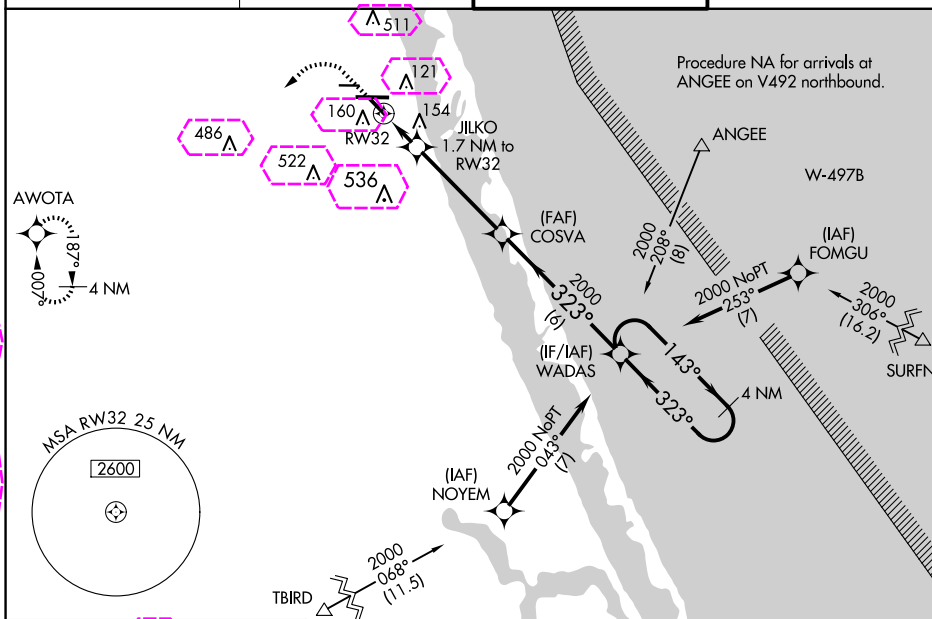
MISSED APPROACH: Climb to 520 then climbing left turn to 2000 direct AWOTA and hold.

ATIS
134.825

PALM BEACH APP CON
132.8

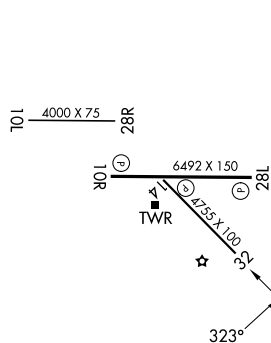
FORT PIERCE TOWER ★
128.2 (CTAF) 0

GND CON (GCO)
119.55

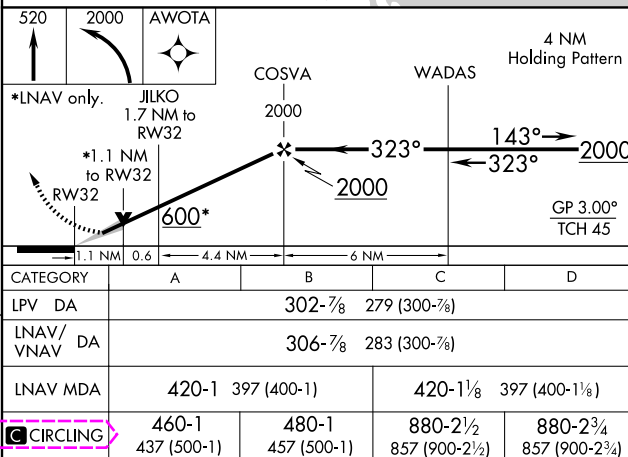


ELEV 23 TDZE 23

Procedure NA for arrivals at TBIRD on V159 southbound and V531 northeast bound.



REIL Rwy 10R and 28L **L**
MIRL all Rwy **L**



FORT PIERCE, FLORIDA
Amdt 1D 18JUN20

27°30'N-80°22'W

TREASURE COAST INTL (FPR)
RNAV (GPS) RWY 32

FORT PIERCE, FLORIDA

AL-5343 (FAA)

25219

WAAS CH 99729 W32A	APP CRS 323°	Rwy Ldg 4755 TDZE 23 Apt Elev 23
--	------------------------	---

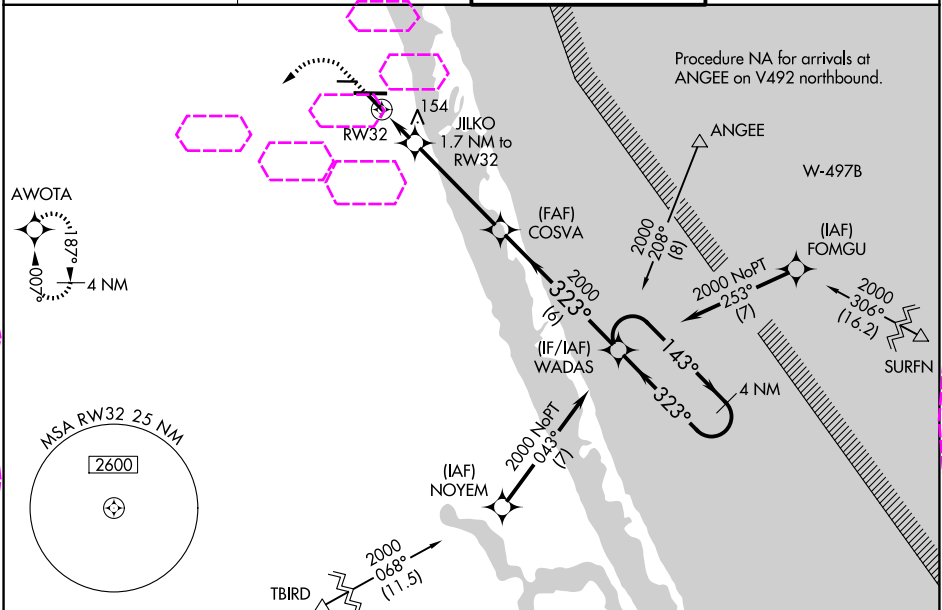
RNAV (GPS) RWY 32

TREASURE COAST INTL (FPR)

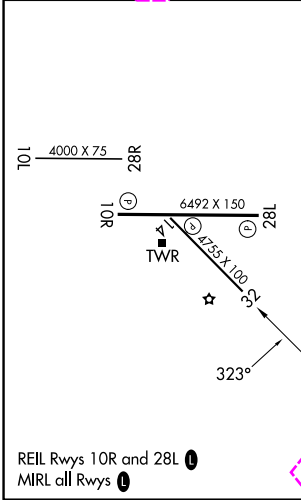
⚠ For uncompensated Baro-VNAV systems, LNAV/VNAV NA below -15C (5°F) or above 43°C (109°F). DME/DME RNP-0.3 NA. When local altimeter setting not received, use Vero Beach altimeter setting and increase LPV DA to 325, LNAV/VNAV DA to 329 feet and MDA 40 feet; increase LPV all Cats, LNAV/VNAV all Cats, and LNAV Cats C/D visibility ¼ SM. Increase Circling visibility Cat C/D ¼ SM. Baro-VNAV NA when using Vero Beach altimeter setting.

MISSED APPROACH:
Climb to 520 then climbing left turn to 2000 direct AWOTA and hold.

ATIS 134.825	PALM BEACH APP CON 132.8	FORT PIERCE TOWER★ 128.2 (CTAF) 0	GND CON (GCO) 119.55
------------------------	------------------------------------	---	--------------------------------



ELEV 23	D	TDZE 23
----------------	----------	----------------



Procedure NA for arrivals at TBIRD on V159 southbound and V531 northeast bound.				
<div>520 2000 AWOTA</div> <div>4 NM Holding Pattern</div> <div>*LNAV only. JILKO 1.7 NM to RW32</div> <div>*1.1 NM to RW32</div> <div>600*</div> <div>1.1 NM 0.6 4.4 NM 6 NM</div>				
CATEGORY	A	B	C	D
LPV DA	302-7/8		279 (300-7/8)	
LNAV/VNAV DA	306-7/8		283 (300-7/8)	
LNAV MDA	420-1 397 (400-1)		420-1 1/8 397 (400-1 1/8)	
CIRCLING	460-1 437 (500-1)	480-1 457 (500-1)	880-2 1/2 857 (900-2 1/2)	880-2 3/4 857 (900-2 3/4)

FORT PIERCE, FLORIDA
Amdt 1D 18JUN20

27°30'N-80°22'W

TREASURE COAST INTL (FPR)
RNAV (GPS) RWY 32

SE-3, 07 AUG 2025 to 04 SEP 2025

SE-3, 07 AUG 2025 to 04 SEP 2025