

FORT PIERCE, FLORIDA

AL-5343 (FAA)

25163

APP CRS	Rwy Ldg	6492
292°	TDZE	23
	Apt Elev	23

RNAV (GPS) RWY 28L

TREASURE COAST INTL (FPR)

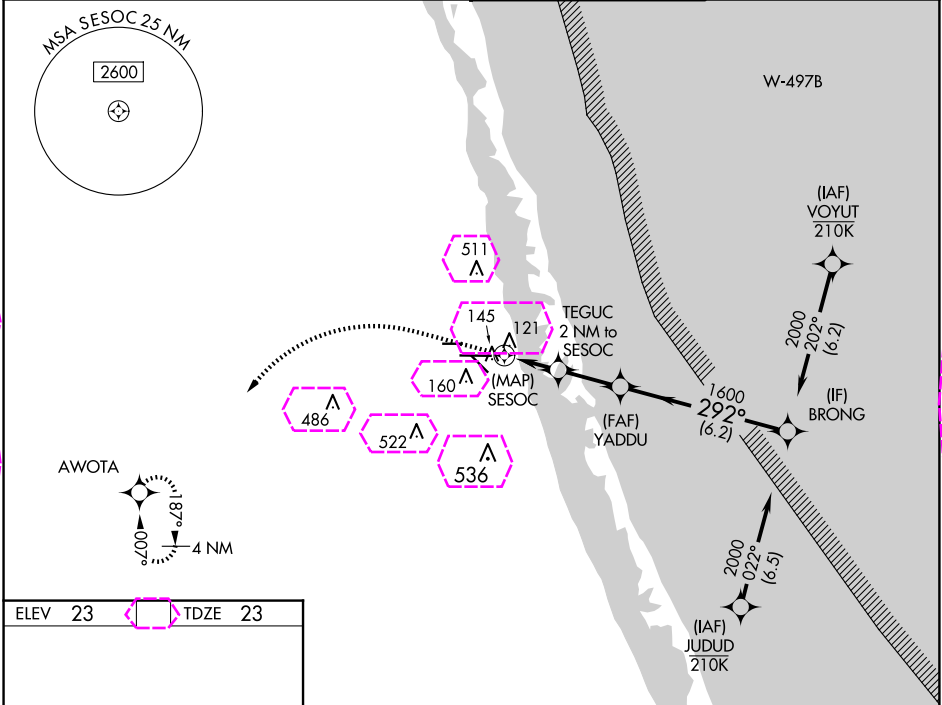
RNP APCH-GPS.

⚠

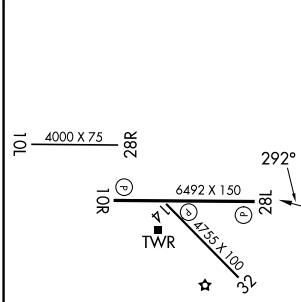
For uncompensated Baro-VNAV systems, LNAV/VNAV NA below -15°C or above 54°C.
Rwy 28L helicopter visibility reduction below ¾ SM NA.

MISSED APPROACH: Climb to 440 then climbing left turn to 2000 direct AWOTA and hold.

ATIS 134.825	PALM BEACH APP CON 132.8	FORT PIERCE TOWER ★ 128.2 (CTAF) 0	GND CON (GCO) 119.55
------------------------	------------------------------------	---	--------------------------------



ELEV 23	TDZE 23
---------	---------



440	2000	AWOTA	VGSI and RNAV glidepath not coincident. (VGSI Angle 3.00/TCH 63).	BRONG
YADDU 1600 860 1600 GP 3.00° TCH 59				
0.5 2 NM 2.3 NM 6.2 NM				
CATEGORY	A	B	C	D
LNAV/VNAV DA	410-1¼ 387 (400-1¼)			
LNAV MDA	400-1 377 (400-1)			
CIRCLING	460-1 437 (500-1)	480-1 457 (500-1)	880-2½ 857 (900-2½)	880-2¾ 857 (900-2¾)

REIL Rwy 10R and 28L **0**
MIRL all Rwy 1 **0**

FORT PIERCE, FLORIDA
Amdt 1D 12JUN25

27°30'N-80°22'W

TREASURE COAST INTL (FPR) RNAV (GPS) RWY 28L

SE-3, 10 JUL 2025 to 07 AUG 2025

SE-3, 10 JUL 2025 to 07 AUG 2025

FORT PIERCE, FLORIDA

AL-5343 (FAA)

25219

APP CRS	Rwy Ldg	6434
292°	TDZE	23
	Apt Elev	23

RNAV (GPS) RWY 28L

TREASURE COAST INTL (FPR)

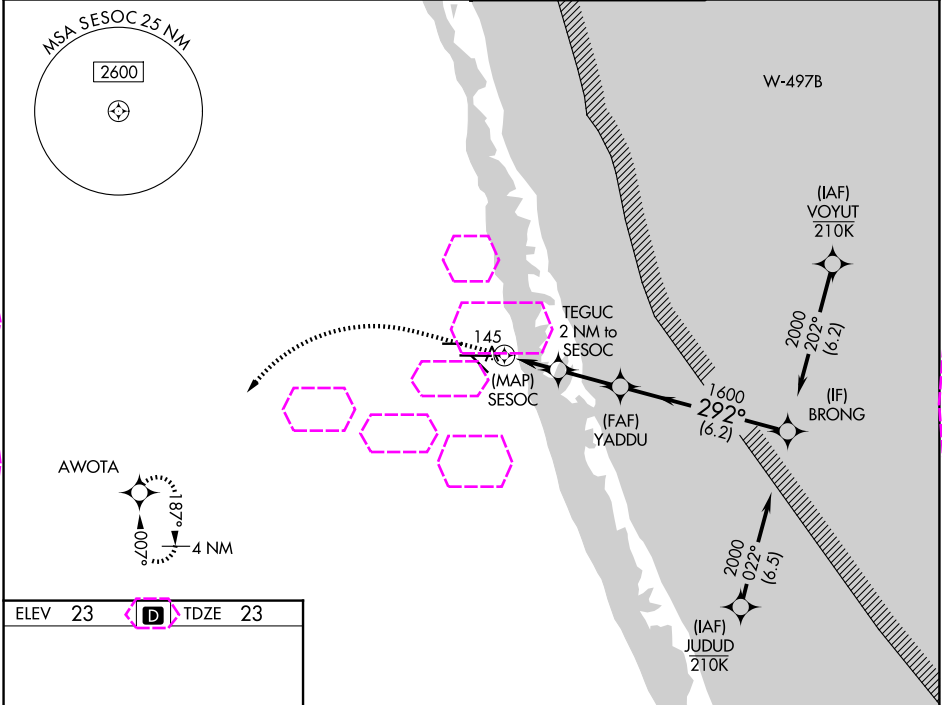
RNP APCH-GPS.

▼

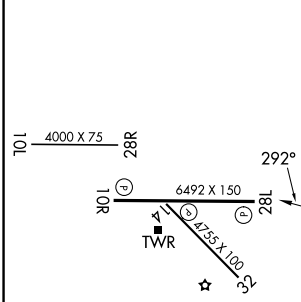
⚠ For uncompensated Boro-VNAV systems, LNAV/VNAV NA below -15°C or above 54°C.
Rwy 28L helicopter visibility reduction below ¾ SM NA.

MISSED APPROACH: Climb to 440 then climbing left turn to 2000 direct AWOTA and hold.

ATIS 134,825	PALM BEACH APP CON 132.8	FORT PIERCE TOWER ★ 128.2 (CTAF) 0	GND CON (GCO) 119.55
------------------------	------------------------------------	--	--------------------------------



ELEV 23	D	TDZE 23
---------	----------	---------



440	2000	AWOTA	VGSI and RNAV glidepath not coincident. (VGSI Angle 3.00/TCH 63).	
YADDU		BRONG		
TEGUC 2 NM to SESOC		1600	292°	2000
SESOC		860	1600	GP 3.00° TCH 59
0.5		2 NM	2.3 NM	6.2 NM
CATEGORY	A	B	C	D
LNAV/ VNAV	DA	410-1¼	387 (400-1¼)	
LNAV	MDA	400-1	377 (400-1)	
CIRCLING	460-1 437 (500-1)	480-1 457 (500-1)	880-2½ 857 (900-2½)	880-2¾ 857 (900-2¾)

FORT PIERCE, FLORIDA
Amdt 1D 12JUN25

27°30'N-80°22'W

TREASURE COAST INTL (FPR)

RNAV (GPS) RWY 28L