

FORT PIERCE, FLORIDA

AL-5343 (FAA)

25163

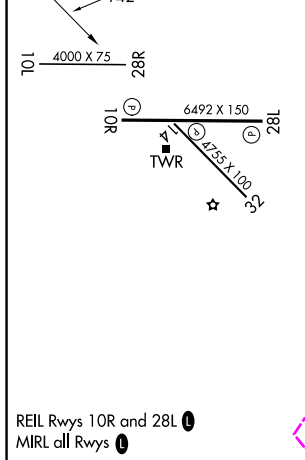
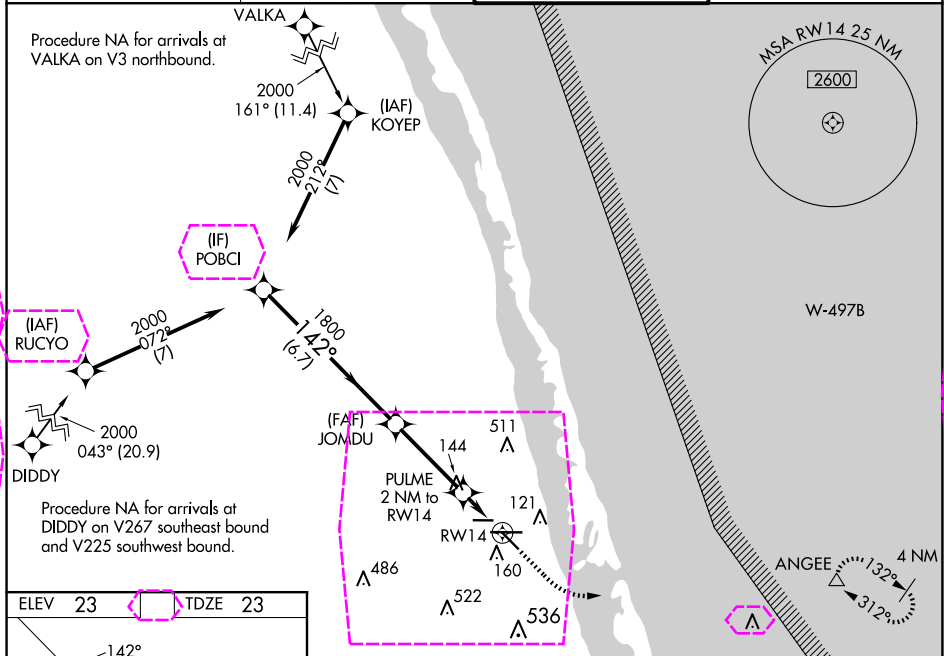
WAAS CH 82508 W14A	APP CRS 142°	Rwy Ldg 4755 TDZE 23 Apt Elev 23
--	------------------------	---

RNAV (GPS) RWY 14

TREASURE COAST INTL (FPR)

<p>⚠ Baro-VNAV NA when using Vero Beach altimeter setting. For uncompensated Baro-VNAV systems, LNAV/VNAV NA below -15°C (5°F) or above 43°C (109°F). When VGSi inop, Straight-in/Circling Rwy 14 procedure NA at night. DME/DME RNP-0.3 NA. Helicopter visibility below 1 SM NA. When local altimeter setting not received, use Vero Beach altimeter setting and increase LPV DA to 303, LNAV/VNAV DA to 378 and all MDA 40 feet; increase LNAV visibility Cats C/D ½ SM; increase Circling visibility Cat C/D ¼ SM.</p>	<p>MISSED APPROACH: Climb to 480 then climbing left turn to 2000 direct ANGEE and hold.</p>
--	--

ATIS 134.825	PALM BEACH APP CON 132.8	FORT PIERCE TOWER ★ 128.2 (CTAF) 0	GND CON (GCO) 119.55
------------------------	------------------------------------	--	--------------------------------



FORT PIERCE, FLORIDA

AL-5343 (FAA)

25219

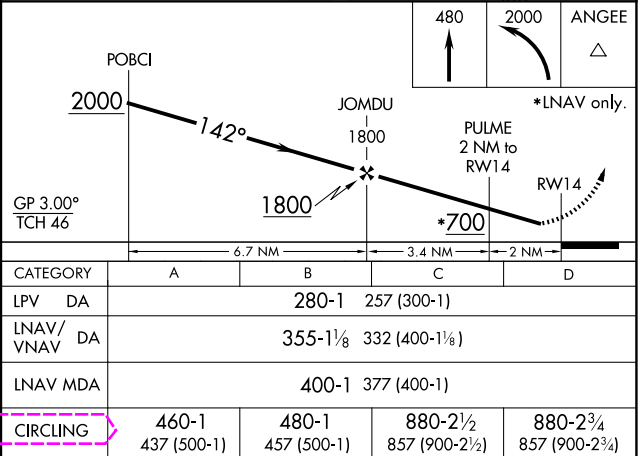
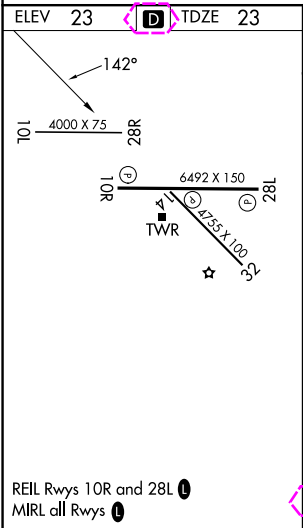
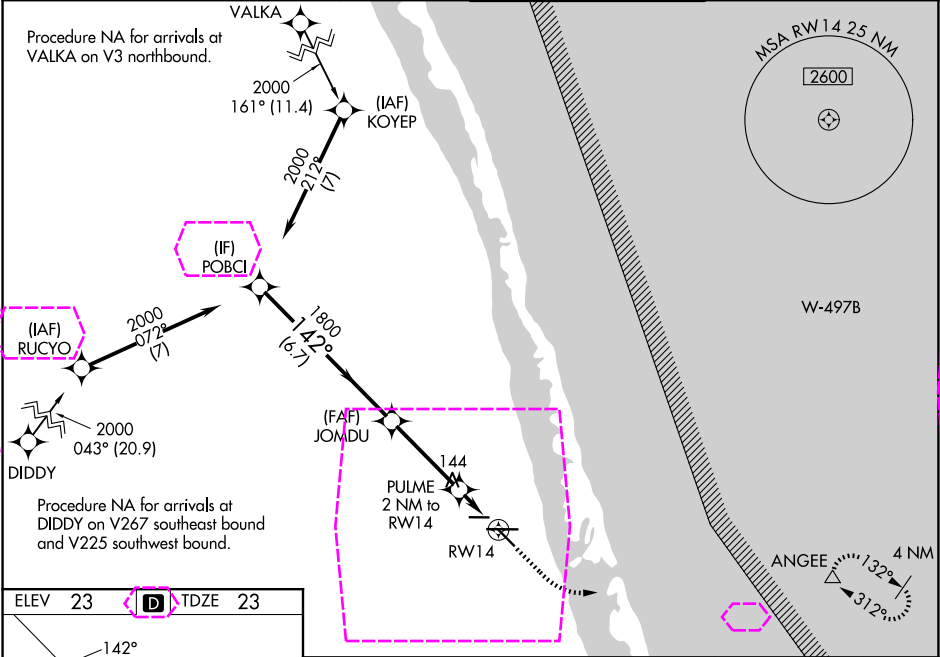
WAAS CH 82508 W14A	APP CRS 142°	Rwy Ldg TDZE 23 Apt Elev 23
--	------------------------	---

RNAV (GPS) RWY 14
TREASURE COAST INTL (FPR)

⚠ Baro-VNAV NA when using Vero Beach altimeter setting. For uncompensated Baro-VNAV systems, LNAV/VNAV NA below -15°C (5°F) or above 43°C (109°F). When VGSi inop, Straight-in/Circling Rwy 14 procedure NA at night. DME/DME RNP-0.3 NA. Helicopter visibility below 1 SM NA. When local altimeter setting not received, use Vero Beach altimeter setting and increase LPV DA to 303, LNAV/VNAV DA to 378 and all MDA 40 feet; increase LNAV visibility Cats C/D ½ SM; increase Circling visibility Cat C/D ¼ SM.

MISSED APPROACH: Climb to 480 then climbing left turn to 2000 direct ANGEE and hold.

ATIS 134.825	PALM BEACH APP CON 132.8	FORT PIERCE TOWER ★ 128.2 (CTAF) 0	GND CON (GCO) 119.55
------------------------	------------------------------------	--	--------------------------------



FORT PIERCE, FLORIDA
Amdt 2C 18JUN20

27°30'N-80°22'W

TREASURE COAST INTL (FPR)
RNAV (GPS) RWY 14

SE-3, 07 AUG 2025 to 04 SEP 2025

SE-3, 07 AUG 2025 to 04 SEP 2025