

FORT PIERCE, FLORIDA


AL-5343 (FAA)

25163

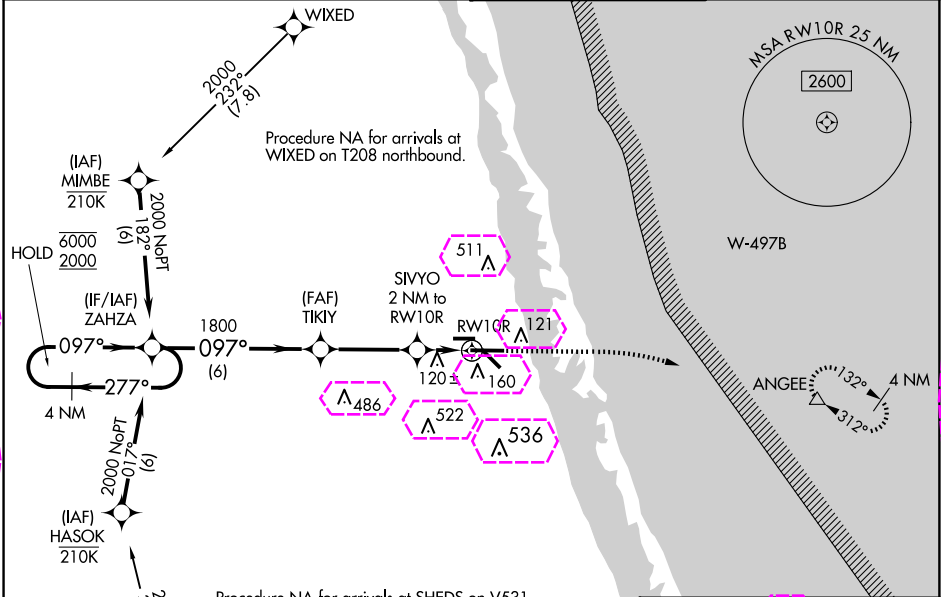
WAAS CH 69529 W10A	APP CRS 097°	Rwy Ldg TDZE 23 Apt Elev 23
--	------------------------	---


RNAV (GPS) RWY 10R

TREASURE COAST INTL (FPR)

RNP APCH-GPS.	MISSED APPROACH: Climb to 480 then climbing right turn to 2000 direct ANGEE and hold.
 For uncompensated Baro-VNAV systems, procedure NA below 2°C or above 54°C.	

ATIS 134.825	PALM BEACH APP CON 132.8	FORT PIERCE TOWER ★ 128.2 (CTAF) 0	GND CON (GCO) 119.55
------------------------	------------------------------------	--	--------------------------------



ELEV 23	TDZE 23
VGSI and RNAV glidepath not coincident (VGSI Angle 3.00/TCH 52).	
4 NM Holding Pattern ZAHZA	
6000 2000 277° 097° 1800 700 480 2000 ANGEE	
GP 3.00° TCH 49	
6 NM 3.5 NM 1 NM 1 NM	
SIVYO 2 NM to RW10R 1 NM to RW10R RW10R	
CATEGORY	A B C D
LPV DA	273-3/4 250 (300-3/4)
LNAV/VNAV DA	297-7/8 274 (300-7/8)
LNAV MDA	380-1 357 (400-1)
 CIRCLING	460-1 480-1 880-2 1/2 880-2 3/4
	437 (500-1) 457 (500-1) 857 (900-2 1/2) 857 (900-2 3/4)

REIL Rwy 10R and 28L 0
MIRL all Rwy 0

FORT PIERCE, FLORIDA
Amdt 3 12JUN25

27°30'N-80°22'W

TREASURE COAST INTL (FPR)
RNAV (GPS) RWY 10R

FORT PIERCE, FLORIDA

AL-5343 (FAA)

25219

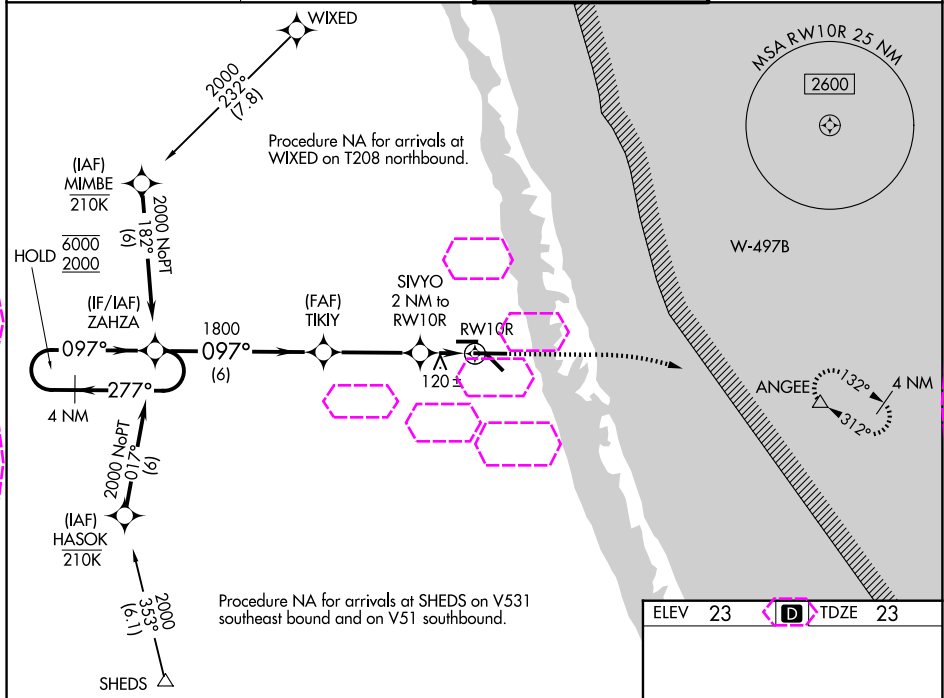
WAAS CH 69529 W10A	APP CRS 097°	Rwy Ldg TDZE 23 Apt Elev 23
--	------------------------	---

RNAV (GPS) RWY 10R

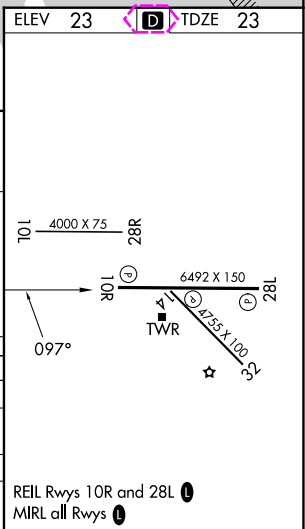
TREASURE COAST INTL (FPR)

RNP APCH-GPS. ⚠ For uncompensated Baro-VNAV systems, procedure NA below 2°C or above 54°C.	MISSED APPROACH: Climb to 480 then climbing right turn to 2000 direct ANGEE and hold.
---	---

ATIS 134.825	PALM BEACH APP CON 132.8	FORT PIERCE TOWER ★ 128.2 (CTAF) 0	GND CON (GCO) 119.55
------------------------	------------------------------------	--	--------------------------------



VGSI and RNAV glidepath not coincident (VGSI Angle 3.00/TCH 52).				
4 NM Holding Pattern				
GP 3.00° TCH 49				
ZAHZA				
TIKIY				
SIVYO 2 NM to RWY 10R				
1 NM to RWY 10R				
RWY 10R				
6 NM 3.5 NM 1 NM 1 NM				
CATEGORY	A	B	C	D
LPV DA		273-¾	250 (300-¾)	
LNAV/VNAV DA		297-⅞	274 (300-⅞)	
LNAV MDA		380-1	357 (400-1)	
CIRCLING	460-1 437 (500-1)	480-1 457 (500-1)	880-2½ 857 (900-2½)	880-2¾ 857 (900-2¾)



FORT PIERCE, FLORIDA
Amdt 3 12JUN25

27°30'N-80°22'W

TREASURE COAST INTL (FPR)
RNAV (GPS) RWY 10R