

FORT PIERCE, FLORIDA

AL-5343 (FAA)

25163

LOC/DME I-FJD	APP CRS	Rwy Ldg	6492
110.55	097°	TDZE	23
Chan 42 (Y)		Apt Elev	23

ILS or LOC RWY 10R
TREASURE COAST INTL (FPR)

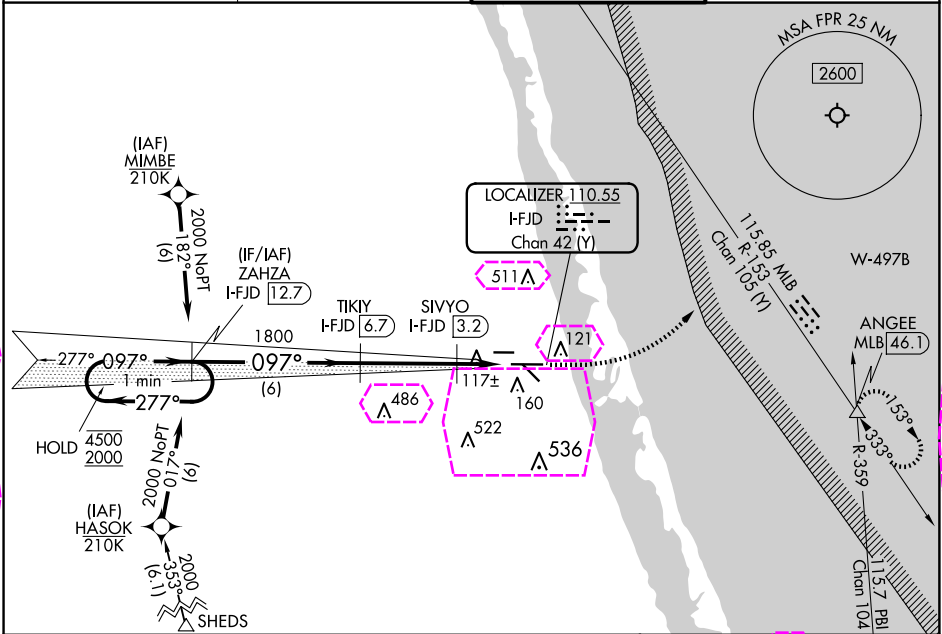
RNAV 1 - GPS required.

DME required.

Autopilot coupled approach NA below 720 MSL.

MISSED APPROACH: Climb to 1000 then climbing left turn to 2000 on heading 085° and on MLB VOR/DME R-153 to ANGEE/MLB VOR/DME 46.1 DME and hold.

ATIS 134.825	PALM BEACH APP CON 132.8	FORT PIERCE TOWER ★ 128.2 (CTAF) 0	GND CON (GCO) 119.55
-----------------	-----------------------------	---------------------------------------	-------------------------



VGSI and ILS glidepath not coincident (VGSI Angle 3.00/TCH 52).				1000	2000	MLB	ANGEE	ELEV 23	TDZE 23
One Minute Holding Pattern				↑	hdg 085°	R-153	△		
ZAHZA I-FJD 12.7				TIKI I-FJD 6.7	SIVYO I-FJD 3.2				
4500 ← 277° 2000 → 097°				1800	560	I-FJD 2.2	I-FJD 1.2		
GS 3.00° TCH 49				6 NM	3.4 NM	1 NM	1 NM		
CATEGORY	A	B	C	D					
S-ILS 10R	273-¾		250 (300-¾)						
S-LOC 10R	560-1	537 (600-1)	560-1½		537 (600-1½)				
CIRCLING	560-1	537 (600-1)	880-2½		880-2¾				
			857 (900-2½)		857 (900-2¾)				
SIVYO FIX MINIMUMS (DME REQUIRED)									
S-LOC 10R	380-1		357 (400-1)						
CIRCLING	460-1	480-1	880-2½		880-2¾				
	437 (500-1)	457 (500-1)	857 (900-2½)		857 (900-2¾)				
REIL Rwy 10R and 28L									
MRL all Rwy 1									
FAF to MAP 5.4 NM									
Knots	60	90	120	150	180				
Min:Sec	5:24	3:36	2:42	2:10	1:48				

FORT PIERCE, FLORIDA

Amtd 5 12JUN25

27°30'N-80°22'W

TREASURE COAST INTL (FPR)
ILS or LOC RWY 10R

FORT PIERCE, FLORIDA

AL-5343 (FAA)

25219

LOC/DME I-FJD	APP CRS	Rwy Ldg	6483
110.55	097°	TDZE	23
Chan 42 (Y)		Apt Elev	23

ILS or LOC RWY 10R

TREASURE COAST INTL (FPR)

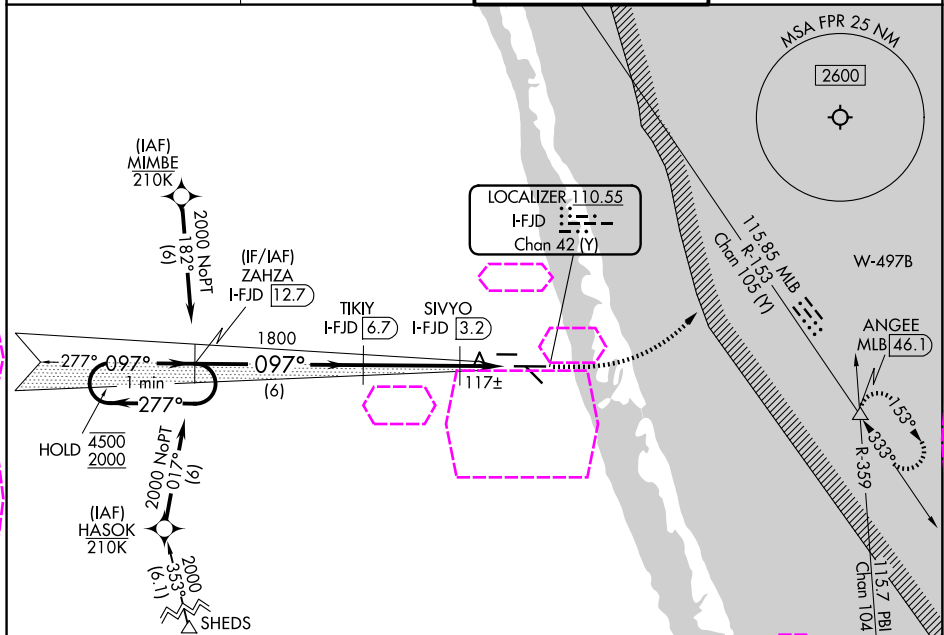
RNAV 1 - GPS required.

DME required.

Autopilot coupled approach NA below 720 MSL.

MISSED APPROACH: Climb to 1000 then climbing left turn to 2000 on heading 085° and on MLB VOR/DME R-153 to ANGEE/MLB VOR/DME 46.1 DME and hold.

ATIS 134.825	PALM BEACH APP CON 132.8	FORT PIERCE TOWER ★ 128.2 (CTAF) 0	GND CON (GCO) 119.55
-----------------	-----------------------------	---------------------------------------	-------------------------



VGSi and ILS glidepath not coincident (VGSi Angle 3.00/TCH 52).				1000	2000	MLB	ANGEE	ELEV 23	TDZE 23
One Minute Holding Pattern				↑	hdg R-153 085°		△		
ZAHZA I-FJD 12.7				TIKI I-FJD 6.7	SIVYO I-FJD 3.2				
4500 ← 277° 2000 → 097°				1800	560				
GS 3.00° TCH 49				6 NM	3.4 NM	1 NM	1 NM		
CATEGORY	A		B		C		D		
S-ILS 10R	273-¾				250 (300-¾)				
S-LOC 10R	560-1	537 (600-1)		560-1½		537 (600-1½)			
CIRCLING	560-1	537 (600-1)		880-2½ 857 (900-2½)		880-2¾ 857 (900-2¾)			
SIVYO FIX MINIMUMS (DME REQUIRED)									
S-LOC 10R	380-1		357 (400-1)						
CIRCLING	460-1 437 (500-1)	480-1 457 (500-1)	880-2½ 857 (900-2½)		880-2¾ 857 (900-2¾)				
REIL Rwy 10R and 28L MIRL all Rwy 1									
FAF to MAP 5.4 NM									
Knots	60	90	120	150	180				
Min:Sec	5:24	3:36	2:42	2:10	1:48				

FORT PIERCE, FLORIDA

Amdt 5 12JUN25

27°30'N-80°22'W

TREASURE COAST INTL (FPR)

ILS or LOC RWY 10R