

| | | |
|---------|----------|------|
| APP CRS | Rwy Idg | 5300 |
| 302° | TDZE | 408 |
| | Apt Elev | 413 |

RNAV (GPS) RWY 30R

ST LOUIS DOWNTOWN (CPS)

T Circling Rwy 5 NA at night. DME/DME RNP-0.3 NA. Rwy 30R helicopter visibility reduction below $\frac{3}{4}$ SM NA. When local altimeter setting not received, use St Louis Lambert Intl altimeter setting and increase all MDA 80 feet, increase LNAV Cats C/D visibility $\frac{3}{4}$ SM and Circling Cat C visibility $\frac{1}{4}$ SM.

MISSED APPROACH:
Climbing left turn to 3000
direct GLASS and hold.

ATIS
121.45

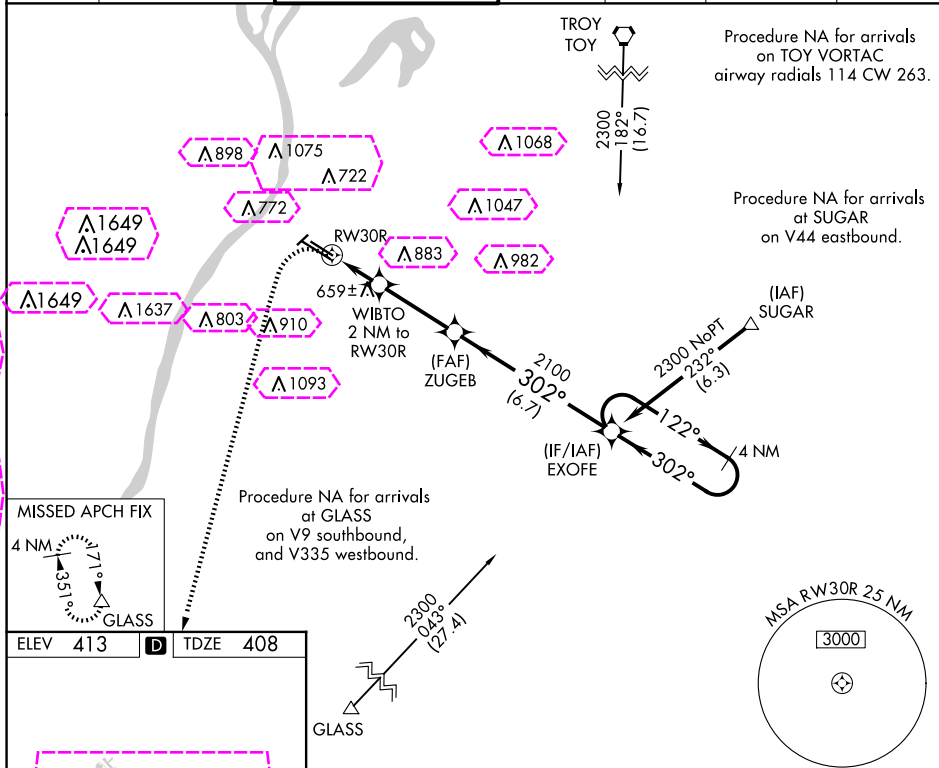
ST LOUIS APP CON
123.7 371.875

DOWNTOWN TOWER ★
119.925 (CTAF) **L** 379.3

GND COM
121.8

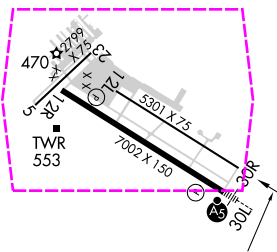
CLNC DEL
118.275

CLNC DEL
121.8
(When twr closed)

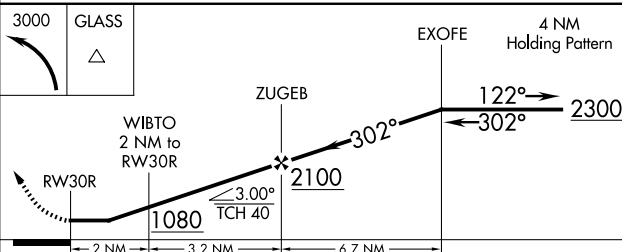
UNICOM
122.95

| | | | | |
|------|-----|----------|------|-----|
| ELEV | 413 | D | TDZE | 408 |
|------|-----|----------|------|-----|

Downloaded from <http://ajph.org/> at University of California, San Diego on June 11, 2015



HIRL Rwy 12R-30L
REIL Rwy 12L and 12R
REIL Rwy 30R **L**
MIRL Rwy 5-23 and 12L-30R



| CATEGORY | A | B | C | D |
|----------|----------------------|-----------------------|--|------------------------|
| LNAV MDA | 920-1 512 (600-1) | | 920-1 ³ / ₈ 512 (600-1 ³ / ₈) | |
| CIRCLING | 920-1 507 (600-1) | 1120-1 707 (800-1) | 1240-2 ¹ / ₂ 827 (900-2 ¹ / ₂) | 1380-3 967 (1000-3) |

CAHOKIA/ST LOUIS, ILLINOIS
Orig-C 25MAR21

38°34'N-90°09'W

ST LOUIS DOWNTOWN (CPS)
RNAV (GPS) RWY 30R

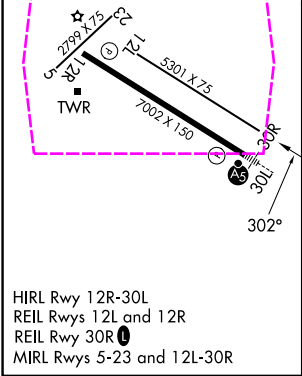
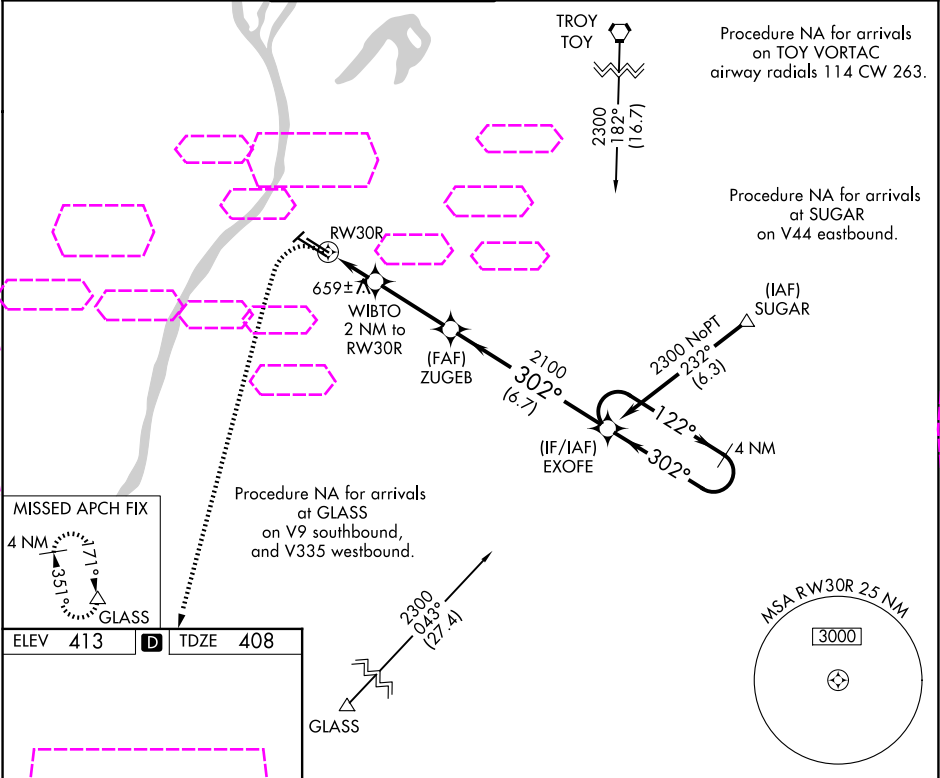
EC-3, 10 JUL 2025 to 07 AUG 2025

| | |
|------------------------|------------------------|
| APP CRS 302° | Rwy Ldg 5300 |
| | TDZE 408 |
| | Apt Elev 413 |

RNAV (GPS) RWY 30R
ST LOUIS DOWNTOWN (CPS)

| | |
|---|--|
| ▼ Circling Rwy 5 NA at night. DME/DME RNP-0.3 NA. Rwy 30R helicopter visibility reduction below ¼ SM NA. When local altimeter setting not received, use St Louis Lambert Intl altimeter setting and increase all MDA 80 feet, increase LNAV Cats C/D visibility ¾ SM and Circling Cat C visibility ¼ SM. | MISSED APPROACH: Climbing left turn to 3000 direct GLASS and hold. |
|---|--|

| | | | | | | |
|-----------------------|--|---|-------------------------|----------------------------|---|-------------------------|
| ATIS 121.45 | ST LOUIS APP CON 123.7 371.875 | DOWNTOWN TOWER ★ 119.925 (CTAF) 0 379.3 | GND CON 121.8 | CLNC DEL 118.275 | CLNC DEL 121.8 (When twr closed) | UNICOM 122.95 |
|-----------------------|--|---|-------------------------|----------------------------|---|-------------------------|



| | | | | |
|----------|----------------------|-----------------------|--|--|
| | | | | |
| CATEGORY | A | B | C | D |
| LNAV MDA | 920-1 | 512 (600-1) | 920-1 ³ / ₅ | 512 (600-1 ³ / ₅) |
| CIRCLING | 920-1 507 (600-1) | 1120-1 707 (800-1) | 1240-2 ¹ / ₂ 827 (900-2 ¹ / ₂) | 1380-3 967 (1000-3) |

EC-3, 07 AUG 2025 to 04 SEP 2025

EC-3, 07 AUG 2025 to 04 SEP 2025