

CAHOKIA/ST LOUIS, ILLINOIS

AL-5316 (FAA)

24193

WAAS CH 70521 W30A	APP CRS 302°	Rwy Idg 7002 TDZE 411 Apt Elev 413
--	------------------------	---

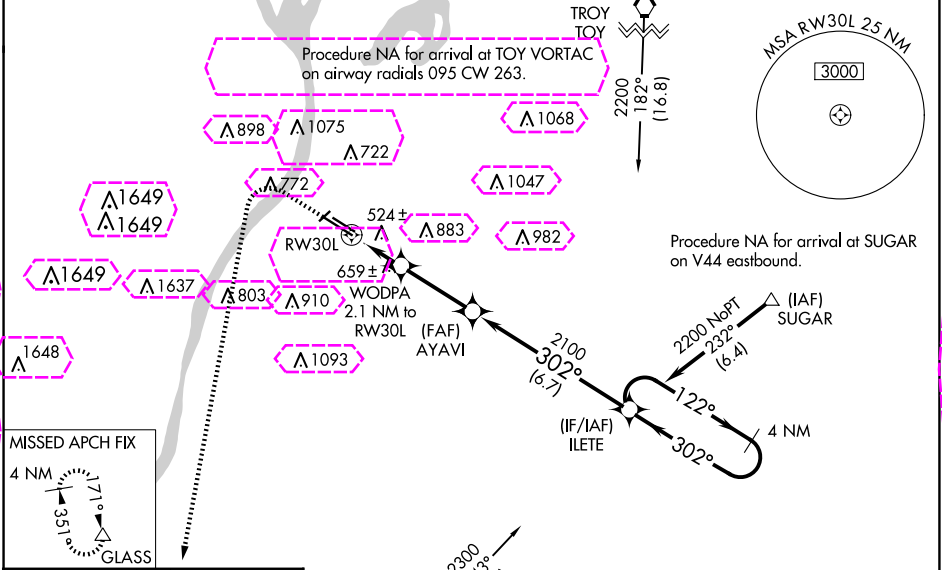
RNAV (GPS) RWY 30L

ST LOUIS DOWNTOWN (CPS)

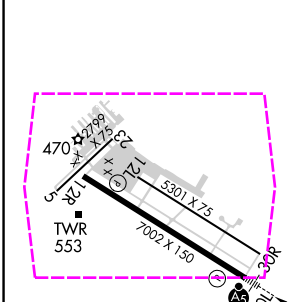
DME/DME RNP-0.3 NA. When local altimeter setting not received, use St Louis Lambert Intl altimeter setting and increase LPV DA to 674 feet, LNAV/VNAV DA to 890 feet, and all MDA 80 feet; increase LNAV/VNAV all Cats visibility $\frac{1}{4}$ SM, LNAV Cats C/D visibility $\frac{3}{8}$ SM, and Circling Cat C visibility $\frac{1}{4}$ SM. VDP and Baro-VNAV NA with St Louis Lambert Intl altimeter setting. For uncompensated Baro-VNAV systems, LNAV/VNAV NA below -15°C (5°F) or above 41°C (105°F). When using St Louis Lambert Intl altimeter setting; for inop MALS, increase LPV all Cats visibility to $\frac{3}{8}$ mile and LNAV Cats C/D visibility to $\frac{1}{2}$ mile. Night landing: Rwy 5 NA.

MALS MISSED APPROACH: Climb to 1000 then climbing left turn to 3000 direct GLASS and hold.

ATIS 121.45	ST LOUIS APP CON 123.7 371.875	DOWNTOWN TOWER ★ 119.925 (CTAF) 0 379.3	GND CON 121.8	CLNC DEL 118.275	CLNC DEL 121.8 (When twr closed)	UNICOM 122.95
-----------------------	--	---	-------------------------	----------------------------	---	-------------------------



ELEV 413	D	TDZE 411
----------	----------	----------



1000	3000	GLASS	AYAVI	ILETE	4 NM Holding Pattern
LNAV only	WODPA 2.1 NM to RW30L	2100	1120	2100	122°
RW30L	*1.5 NM to RW30L	1120*	2100	122°	2200
1.5 NM	0.6 NM	3 NM	6.7 NM		
CATEGORY	A	B	C	D	
LPV DA		611- $\frac{1}{2}$	200 (200- $\frac{1}{2}$)		
LNAV/VNAV DA		827- $\frac{7}{8}$	416 (500- $\frac{7}{8}$)		
LNAV MDA	940- $\frac{1}{2}$	529 (600- $\frac{1}{2}$)	940-1	529 (600-1)	
CIRCLING	940-1 527 (600-1)	1120-1 707 (800-1)	1240-2 $\frac{1}{2}$ 827 (900-2 $\frac{1}{2}$)	1380-3 967 (1000-3)	

CAHOKIA/ST LOUIS, ILLINOIS
Orig-D 25MAR21

38°34'N-90°09'W

ST LOUIS DOWNTOWN (CPS) RNAV (GPS) RWY 30L

EC-3, 10 JUL 2025 to 07 AUG 2025

CAHOKIA/ST LOUIS, ILLINOIS

AL-5316 (FAA)

25219

WAAS CH 70521 W30A	APP CRS 302°	Rwy Ldg 7002 TDZE 411 Apt Elev 413
--	------------------------	---

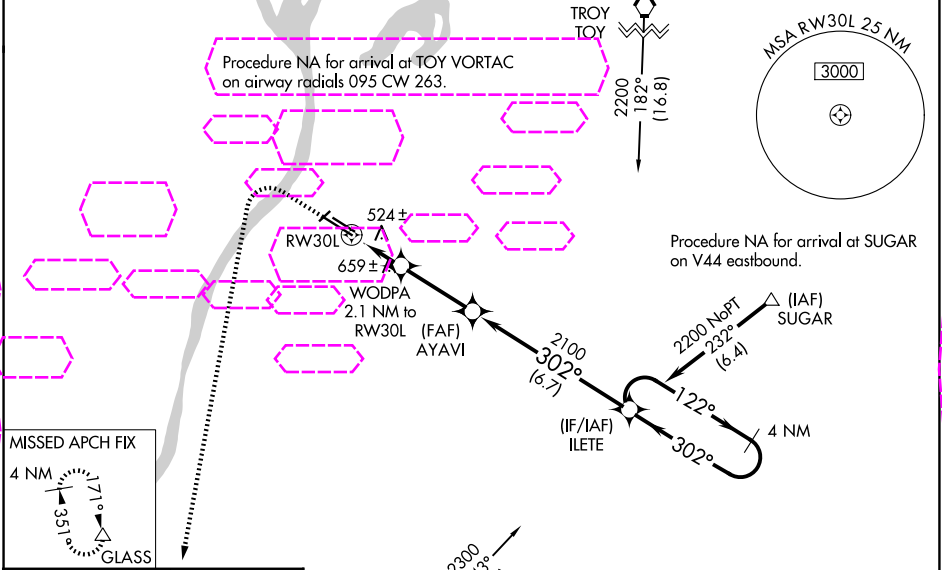
RNAV (GPS) RWY 30L

ST LOUIS DOWNTOWN (CPS)

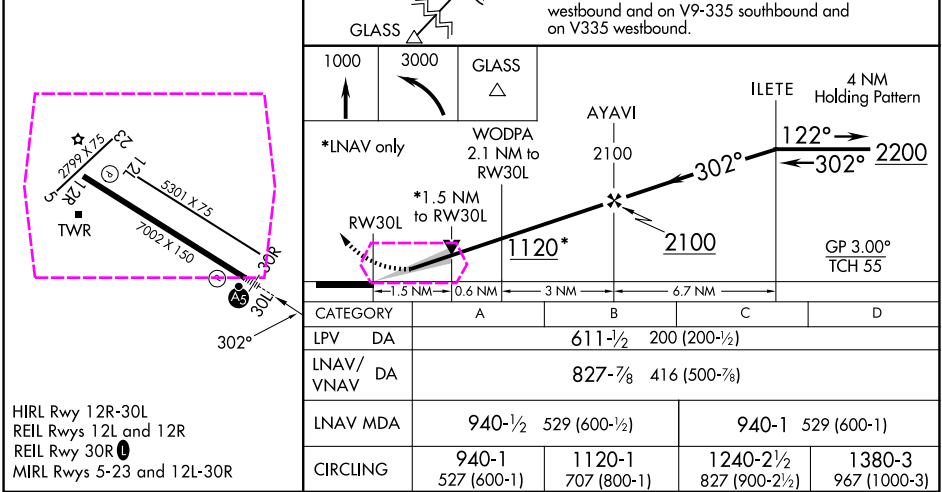
⚠ DME/DME RNP-0.3 NA. When local altimeter setting not received, use St Louis Lambert Intl altimeter setting and increase LPV DA to 674 feet, LNAV/VNAV DA to 890 feet, and all MDA 80 feet; increase LNAV/VNAV all Cats visibility $\frac{1}{4}$ SM, LNAV Cats C/D visibility $\frac{3}{8}$ SM, and Circling Cat C visibility $\frac{1}{4}$ SM. VDP and Baro-VNAV NA with St Louis Lambert Intl altimeter setting. For uncompensated Baro-VNAV systems, LNAV/VNAV NA below -15°C (5°F) or above 41°C (105°F). When using St Louis Lambert Intl altimeter setting; for inop MALSR, increase LPV all Cats visibility to $\frac{3}{8}$ mile and LNAV Cats C/D visibility to $\frac{1}{2}$ mile. Night landing: Rwy 5 NA.

MALSR MISSED APPROACH: Climb to 1000 then climbing left turn to 3000 direct GLASS and hold.

ATIS 121.45	ST LOUIS APP CON 123.7 371.875	DOWNTOWN TOWER ★ 119.925 (CTAF) 0 379.3	GND CON 121.8	CLNC DEL 118.275	CLNC DEL 121.8 (When twr closed)	UNICOM 122.95
-----------------------	--	---	-------------------------	----------------------------	---	-------------------------



ELEV 413	D	TDZE 411
----------	----------	----------



CAHOKIA/ST LOUIS, ILLINOIS
Orig-D 25MAR21

38°34'N-90°09'W

ST LOUIS DOWNTOWN (CPS)
RNAV (GPS) RWY 30L

EC-3, 07 AUG 2025 to 04 SEP 2025

EC-3, 07 AUG 2025 to 04 SEP 2025