

APP CRS 107°	Rwy Idg TDZE Apt Elev	7002 413 413
------------------------	-----------------------------	---

RNAV (GPS) RWY 12R

RNP APCH - GPS	
----------------	--

T When local altimeter setting not received, use St Louis Lambert Intl altimeter setting
A and increase all MDAs 80 feet; increase LNAV Cats B/C/D and Circling Cat C
visibility $\frac{1}{4}$ SM. Circling Rwy 5 NA at night. Rwy 12R helicopter visibility reduction
below $\frac{1}{4}$ SM NA.

MISSED APPROACH: Climb to 2200 direct JIXAB and right turn on 125° track to LICKO and hold.

ATIS
121.45

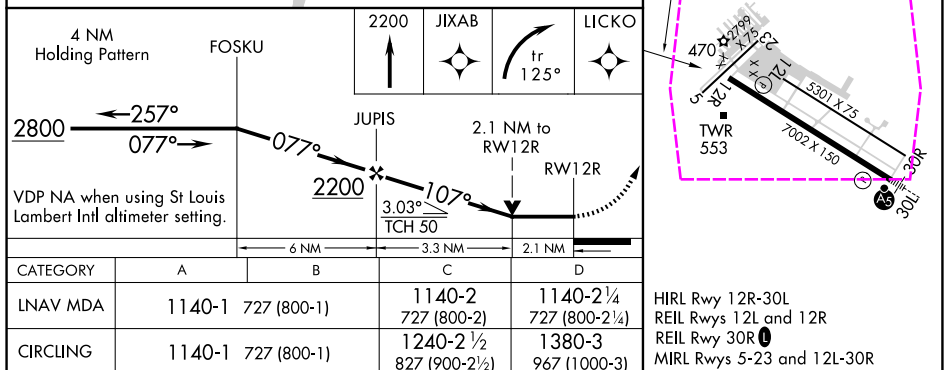
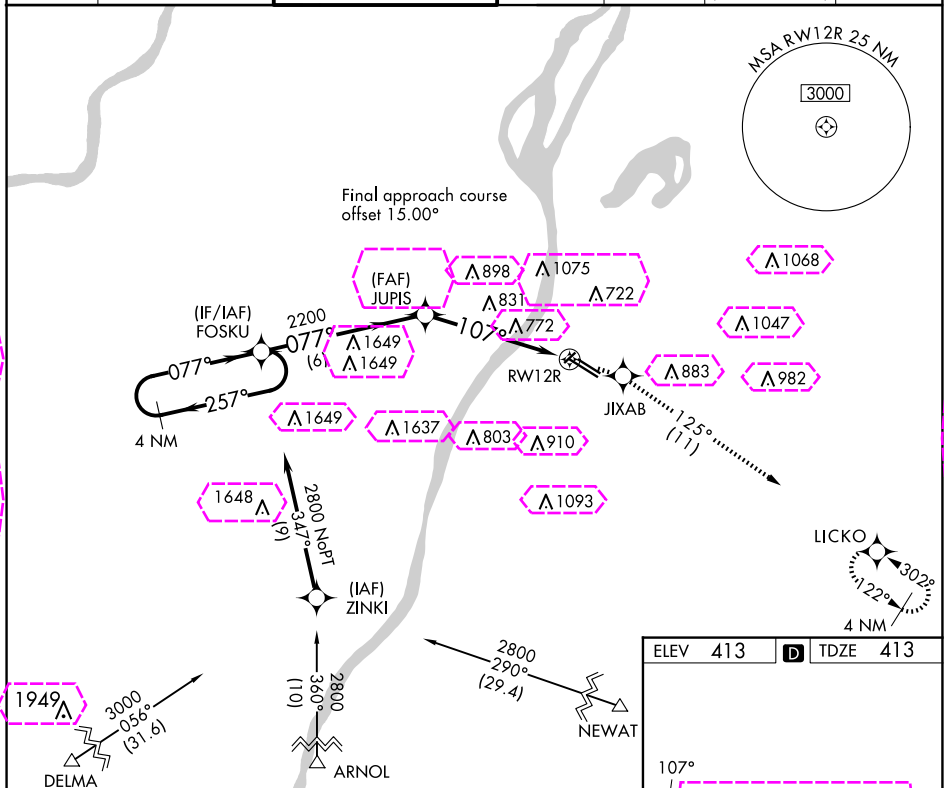
ST LOUIS APP CON
123.7 371.875

DOWNTOWN TOWER ★
119.925 (CTAF) **L** 379.3

GND CON
121.8

CLNC DEL
118.275

CLNC DEL
121.8
(When twr closed)

UNICOM
122.95

EC-3, 10 JUL 2025 to 07 AUG 2025

EC-3, 10 JUL 2025 to 07 AUG 2025

CAHOKIA/ST LOUIS, ILLINOIS

AL-5316 (FAA)

25219

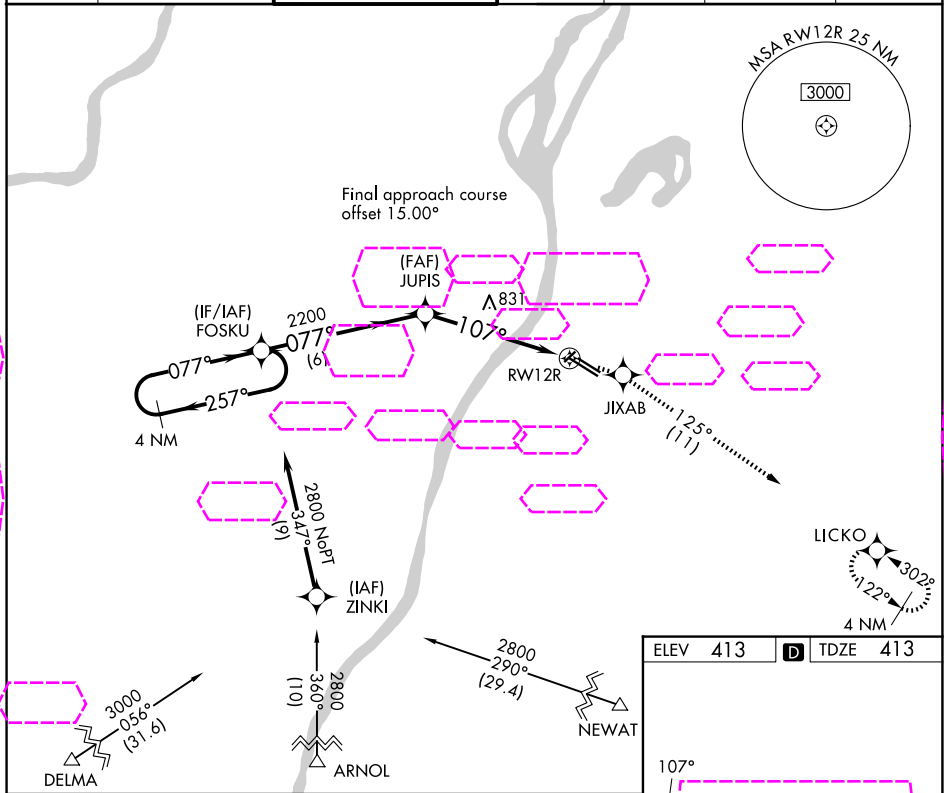
APP CRS	Rwy Ldg	7002
107°	TDZE	413
	Apt Elev	413

RNAV (GPS) RWY 12R

ST LOUIS DOWNTOWN (CPS)

RNP APCH - GPS		MISSED APPROACH: Climb to 2200 direct JIXAB and right turn on 125° track to LICKO and hold.	
When local altimeter setting not received, use St Louis Lambert Intl altimeter setting and increase all MDAs 80 feet; increase LNAV Cats B/C/D and Circling Cat C visibility ¼ SM. Circling Rwy 5 NA at night. Rwy 12R helicopter visibility reduction below ¼ SM NA.			

ATIS	ST LOUIS APP CON	DOWNTOWN TOWER ★	GND CON	CLNC DEL	CLNC DEL	UNICOM
121.45	123.7 371.875	119.925 (CTAF) 0 379.3	121.8	118.275	121.8 (When twr closed)	122.95



4 NM Holding Pattern		FOSKU	2200	JIXAB	LICKO
2800 ← 257° 077° →		JUPIS	2.1 NM to RW12R	tr 125°	
VDP NA when using St Louis Lambert Intl altimeter setting.		2200	3.03°	107°	
		6 NM	3.3 NM	2.1 NM	
CATEGORY	A	B	C	D	
LNAV MDA	1140-1	727 (800-1)	1140-2 727 (800-2)	1140-2¼ 727 (800-2¼)	
CIRCLING	1140-1	727 (800-1)	1240-2½ 827 (900-2½)	1380-3 967 (1000-3)	

HIRL Rwy 12R-30L

REIL Rwys 12L and 12R

REIL Rwy 30R

MIRL Rwys 5-23 and 12L-30R

CAHOKIA/ST LOUIS, ILLINOIS
Orig-E 21MAR24

38°34'N-90°09'W

ST LOUIS DOWNTOWN (CPS)
RNAV (GPS) RWY 12R

EC-3, 07 AUG 2025 to 04 SEP 2025

EC-3, 07 AUG 2025 to 04 SEP 2025