

CAHOKIA/ST LOUIS, ILLINOIS

AL-5316 (FAA)

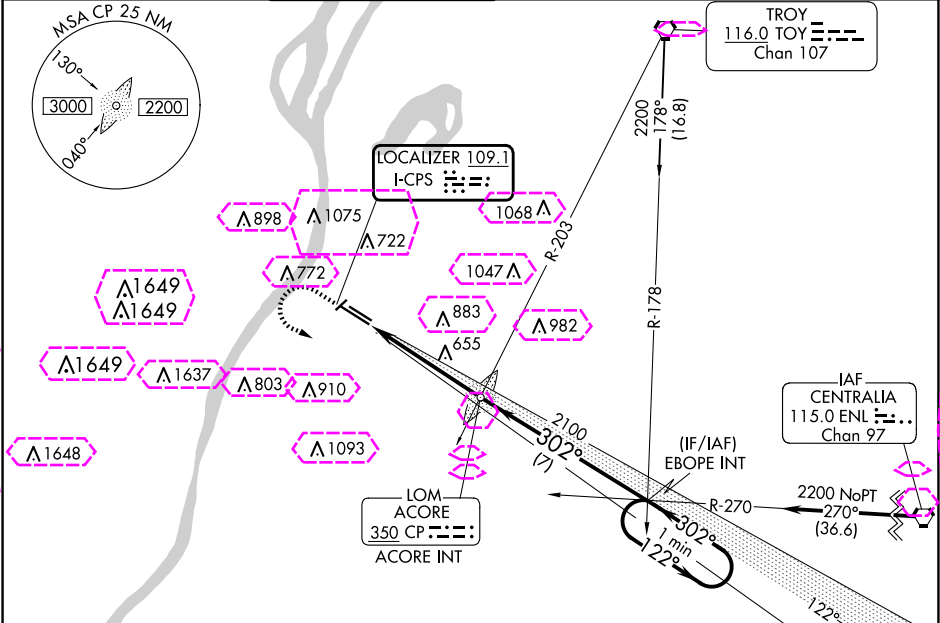
24193

LOC I-CPS <b>109.1</b>	APP CRS <b>302°</b>	Rwy Idg <b>7002</b> TDZE <b>411</b> Apt Elev <b>413</b>
---------------------------	------------------------	---

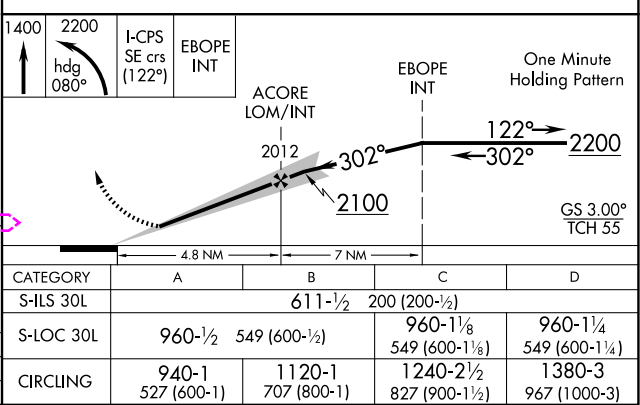
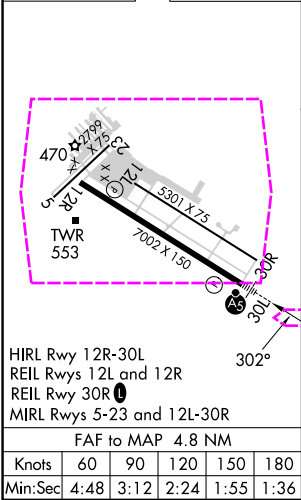
ILS or LOC RWY 30L  
ST LOUIS DOWNTOWN (CPS)

<b>⚠</b> When local altimeter setting not received, use St Louis Lambert Intl altimeter setting: increase DA to 674 feet, increase all MDAs 80 feet and visibility S-LOC 30L Cats C/D and Circling Cat C ¼ SM. For inop ALS when using St Louis Lambert Intl altimeter setting, increase S-ILS 30L visibility ¼ SM. Circling Rwy 5 NA at night.	MALSR 	MISSED APPROACH: Climb to 1400 then climbing left turn to 2200 on heading 080° and on I-CPS SE course (122°) to EBOPE INT and hold.
---	-----------	---

ATIS <b>121.45</b>	ST LOUIS APP CON <b>123.7 371.875</b>	DOWNTOWN TOWER ★ <b>119.925 (CTAF) 0 379.3</b>	GND CON <b>121.8</b>	CLNC DEL <b>118.275</b>	CLNC DEL <b>121.8</b> (When twr closed)	UNICOM <b>122.95</b>
-----------------------	--	---	-------------------------	----------------------------	---	-------------------------



ELEV 413	D	TDZE 411
----------	---	----------



CAHOKIA/ST LOUIS, ILLINOIS  
Amdt 9E 21MAR24

38°34'N-90°09'W

ST LOUIS DOWNTOWN (CPS)  
ILS or LOC RWY 30L

EC-3, 10 JUL 2025 to 07 AUG 2025

EC-3, 10 JUL 2025 to 07 AUG 2025

CAHOKIA/ST LOUIS, ILLINOIS

AL-5316 (FAA)

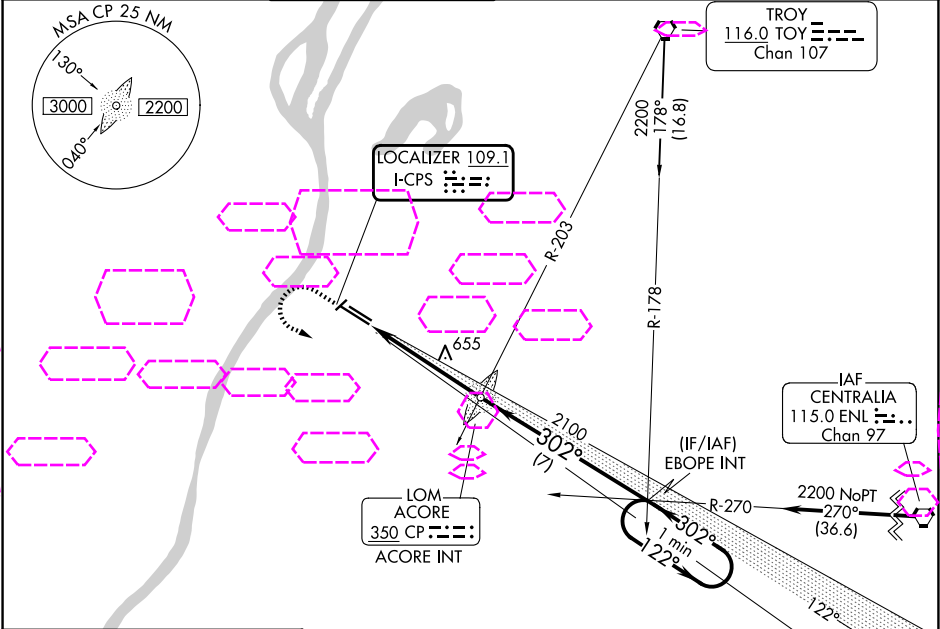
25219

LOC I-CPS <b>109.1</b>	APP CRS <b>302°</b>	Rwy Ldg <b>7002</b> TDZE <b>411</b> Apt Elev <b>413</b>
---------------------------	------------------------	---

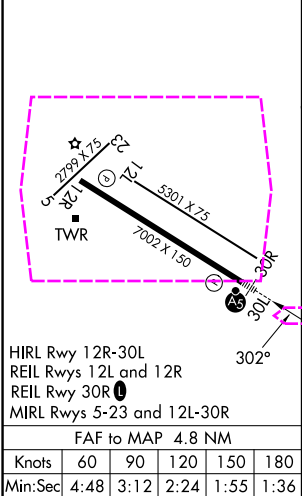
ILS or LOC RWY 30L  
ST LOUIS DOWNTOWN (CPS)

<b>⚠</b> When local altimeter setting not received, use St Louis Lambert Intl altimeter setting: increase DA to 674 feet, increase all MDAs 80 feet and visibility S-LOC 30L Cats C/D and Circling Cat C ¼ SM. For inop ALS when using St Louis Lambert Intl altimeter setting, increase S-ILS 30L visibility ¼ SM. Circling Rwy 5 NA at night.	MALSR 	MISSED APPROACH: Climb to 1400 then climbing left turn to 2200 on heading 080° and on I-CPS SE course (122°) to EBOPE INT and hold.
---	-----------	---

ATIS <b>121.45</b>	ST LOUIS APP CON <b>123.7 371.875</b>	DOWNTOWN TOWER ★ <b>119.925 (CTAF) 0 379.3</b>	GND CON <b>121.8</b>	CLNC DEL <b>118.275</b>	CLNC DEL <b>121.8</b> (When twr closed)	UNICOM <b>122.95</b>
-----------------------	--	---	-------------------------	----------------------------	---	-------------------------



ELEV <b>413</b>	<b>D</b>	TDZE <b>411</b>
-----------------	----------	-----------------



1400	2200	I-CPS SE crs (122°)	EBOPE INT	One Minute Holding Pattern
hdg 080°				
		ACORE LOM/INT	EBOPE INT	
		2012	2100	
		4.8 NM	7 NM	
CATEGORY	A	B	C	D
S-ILS 30L		611-½	200 (200-½)	
S-LOC 30L	960-½	549 (600-½)	960-1½ 549 (600-1½)	960-1¼ 549 (600-1¼)
CIRCLING	940-1 527 (600-1)	1120-1 707 (800-1)	1240-2½ 827 (900-1½)	1380-3 967 (1000-3)

CAHOKIA/ST LOUIS, ILLINOIS  
Amdt 9E 21MAR24

38°34'N-90°09'W

ST LOUIS DOWNTOWN (CPS)  
ILS or LOC RWY 30L

EC-3, 07 AUG 2025 to 04 SEP 2025

EC-3, 07 AUG 2025 to 04 SEP 2025