

25107

AIRPORT DIAGRAM

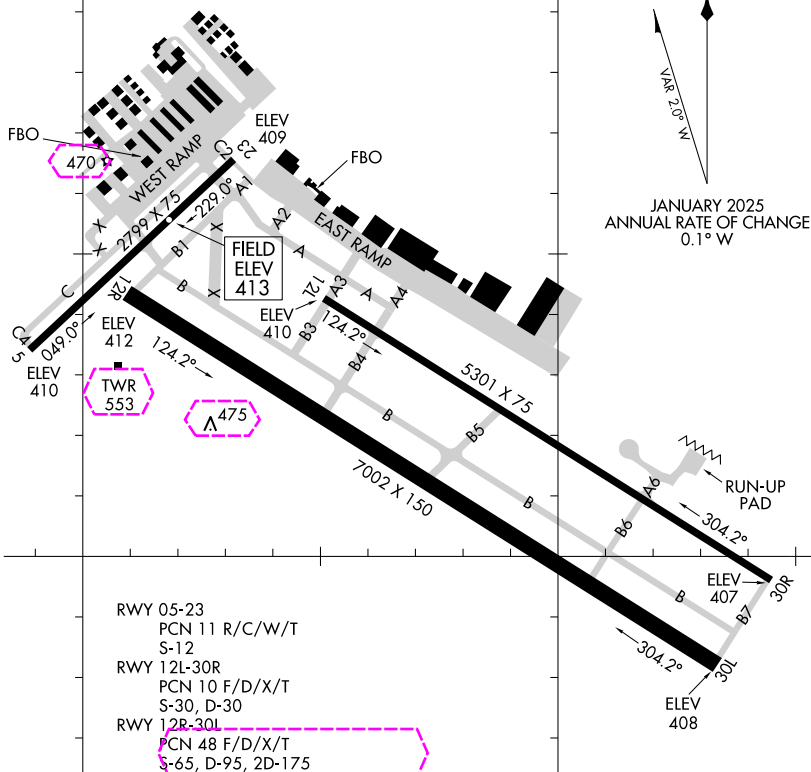
AL-5316 (FAA)

ST LOUIS DOWNTOWN (CPS)
CAHOKIA/ST. LOUIS, ILLINOIS

ATIS
121.45
DOWNTOWN TOWER ★
119.925 379.3
GND CON
121.8
CLNC DEL
118.275
121.8 (When Twr Clsd)

D

38°35'N



JANUARY 2025
ANNUAL RATE OF CHANGE
0.1° W

RWY 05-23
PCN 11 R/C/W/T
S-12
RWY 12L-30R
PCN 10 F/D/X/T
S-30, D-30
RWY 12R-30L
PCN 48 F/D/X/T
S-65, D-95, 2D-175

CAUTION: BE ALERT TO RUNWAY CROSSING CLEARANCES.
READBACK OF ALL RUNWAY HOLDING INSTRUCTIONS IS REQUIRED.

90°10'W

90°09'W

AIRPORT DIAGRAM

CAHOKIA/ST. LOUIS, ILLINOIS
ST LOUIS DOWNTOWN (CPS)

25107

EC-3, 10 JUL 2025 to 07 AUG 2025

EC-3, 10 JUL 2025 to 07 AUG 2025

25219

AIRPORT DIAGRAM

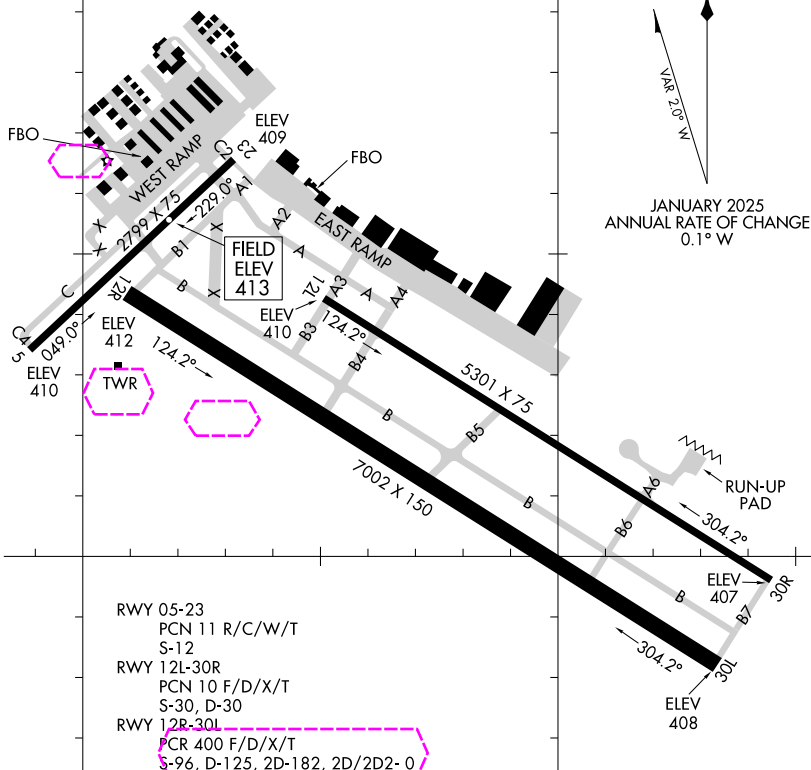
AL-5316 (FAA)

ST LOUIS DOWNTOWN (CPS)
CAHOKIA/ST. LOUIS, ILLINOIS

ATIS
121.45
DOWNTOWN TOWER ★
119.925 379.3
GND CON
121.8
CLNC DEL
118.275
121.8 (When Twr Clsd)

D

38°35'N



CAUTION: BE ALERT TO RUNWAY CROSSING CLEARANCES.
READBACK OF ALL RUNWAY HOLDING INSTRUCTIONS IS REQUIRED.

90°10'W

90°09'W

AIRPORT DIAGRAM

25219

CAHOKIA/ST. LOUIS, ILLINOIS
ST LOUIS DOWNTOWN (CPS)

EC-3, 07 AUG 2025 to 04 SEP 2025