

PROVINCETOWN, MASSACHUSETTS

AL-5313 (FAA)

25163

WAAS CH 86738 W07A	APP CRS 075°	Rwy Ldg TDZE Apt Elev	3502 8 8
--	------------------------	-----------------------------	-------------------------------------

RNAV (GPS) RWY 7

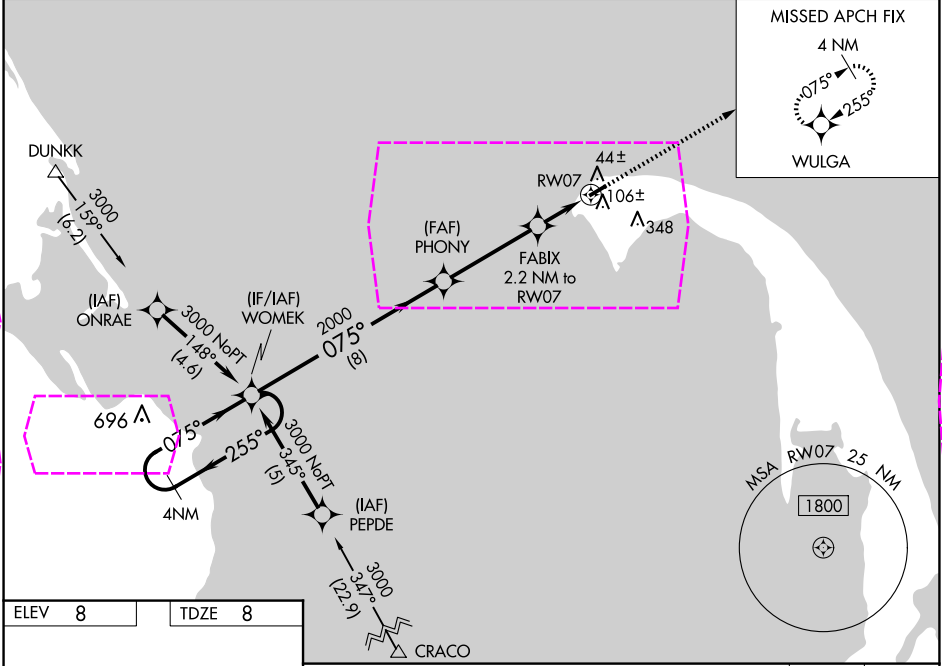
PROVINCETOWN MUNI (PVC)

For uncompensated Baro-VNAV systems, LNAV/VNAV NA below -1.5°C (5°F) or above 54°C (130°F). DME/DME RNP-0.3 NA. Inop table does not apply to LPV Cats A and B. When local altimeter setting not received, use Hyannis altimeter setting: increase LPV DA to 271, increase LNAV/VNAV DA to 331, and Cat A/B visibility 1/2 mile and all MDA 80 feet. For inop MALSF when using Hyannis altimeter setting, increase LPV Cat A/B visibility to 2/3 mile. Baro-VNAV and VDP NA when using Hyannis altimeter setting.

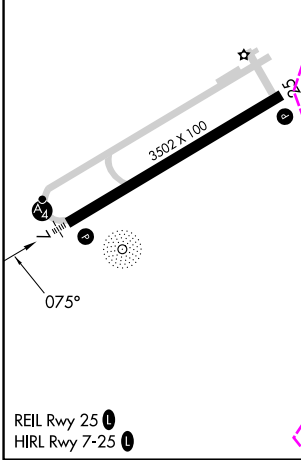
MALSF

MISSED APPROACH:
Climb to 3000 direct WULGA and hold.

AWOS-3PT 119.275	BOSTON APP CON 118.2	CLNC DEL 120.65	UNICOM 122.8 (CTAF)	122.85 0
----------------------------	--------------------------------	---------------------------	-------------------------------	------------------------



ELEV 8	TDZE 8
---------------	---------------



4 NM Holding Pattern WOMEK

3000 ← 255° 075° →

GP 3.00° TCH 40

PHONY 2000

FABIX 2.2 NM to RW07

WULGA 3000

* LNAV only

1 NM to RW07

CATEGORY	A	B	C	D
LPV DA	208-3/4	200 (200-3/4)	NA	
LNAV/VNAV DA	268-3/4	260 (300-3/4)	NA	
LNAV MDA	360-3/4	352 (400-3/4)	NA	
CIRCLING	460-1 452 (500-1)	660-1 652 (700-1)	NA	

NE-1, 10 JUL 2025 to 07 AUG 2025

NE-1, 10 JUL 2025 to 07 AUG 2025

PROVINCETOWN, MASSACHUSETTS

Amk **1** 04FEB16

42°04'N-70°13'W

PROVINCETOWN MUNI (PVC)

RNAV (GPS) RWY 7

PROVINCETOWN, MASSACHUSETTS

AL-5313 (FAA)

25219

WAAS CH 86738 W07A	APP CRS 075°	Rwy Ldg TDZE Apt Elev 8	3502 8 8
--	------------------------	---	-------------------------------------

RNAV (GPS) RWY 7

PROVINCETOWN MUNI (PVC)

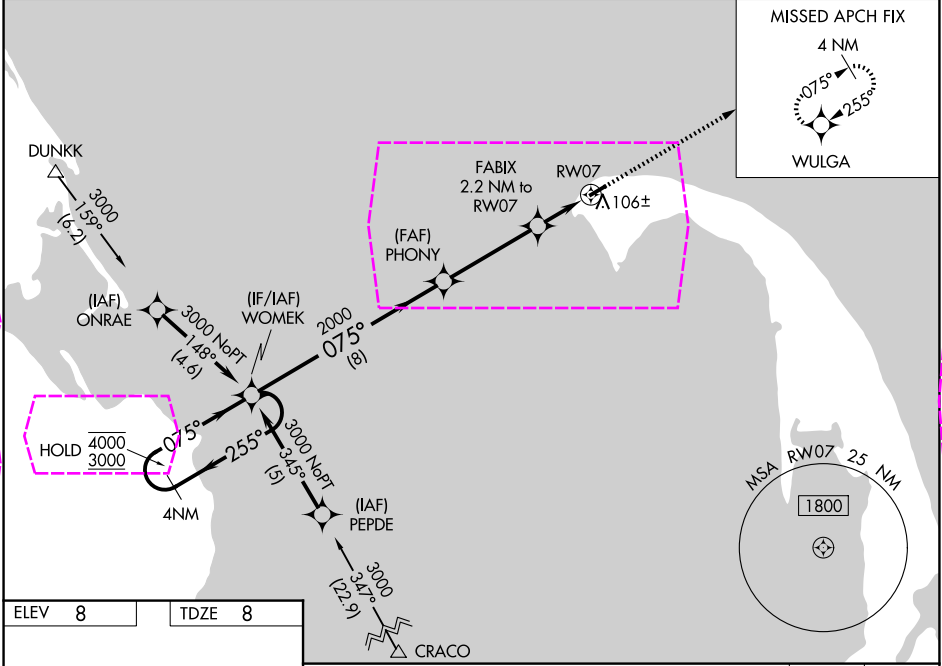
RNP APCH - GPS.

Baro-VNAV and VDP NA when using HYA altimeter setting. Circling Rwy 25 NA at night. For uncompensated Baro-VNAV systems, LNAV/VNAV NA below -15°C or above 54°C. Inop table does not apply to LPV. For inop ALS when using HYA altimeter setting, increase LPV and LNAV/VNAV all Cnts visibility to 7/5 SM. When local altimeter setting not received, use HYA altimeter setting: increase LPV DA to 271 feet, increase LNAV/VNAV DA to 331 feet; increase all MDA 80 feet.

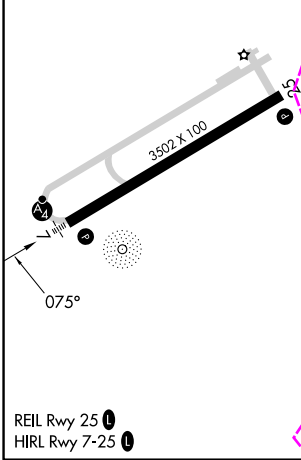
MALSF

MISSED APPROACH:
Climb to 3000 direct
WULGA and hold.

AWOS-3PT 119.275	BOSTON APP CON 118.2	CLNC DEL 120.65	UNICOM 122.8 (CTAF)	122.85 0
----------------------------	--------------------------------	---------------------------	-------------------------------	------------------------



ELEV 8	TDZE 8
---------------	---------------



4 NM Holding Pattern		WOMEK	PHONY	FABIX	WULGA
4000 3000		255° 075°	075°	2.2 NM to RW07	3000
GP 3.00° TCH 40		2000	2000	740	1 NM to RW07
		8 NM	3.9 NM	1.2 NM	1 NM
CATEGORY	A	B	C	D	
LPV DA	208-3/4	200 (200-3/4)	NA	NA	
LNAV/VNAV DA	268-3/4	260 (300-3/4)	NA	NA	
LNAV MDA	360-3/4	352 (400-3/4)	NA	NA	
CIRCLING	460-1 452 (500-1)	660-1 652 (700-1)	NA	NA	

NE-1, 07 AUG 2025 to 04 SEP 2025

NE-1, 07 AUG 2025 to 04 SEP 2025

PROVINCETOWN, MASSACHUSETTS

Amdt 1A 07AUG25

42°04'N-70°13'W

PROVINCETOWN MUNI (PVC)

RNAV (GPS) RWY 7