

APP CRS <b>255°</b>	Rwy Ldg TDZE Apt Elev	<b>3502</b> <b>8</b> <b>8</b>
------------------------	-----------------------------	-------------------------------------

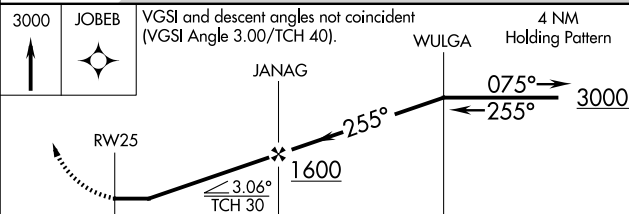
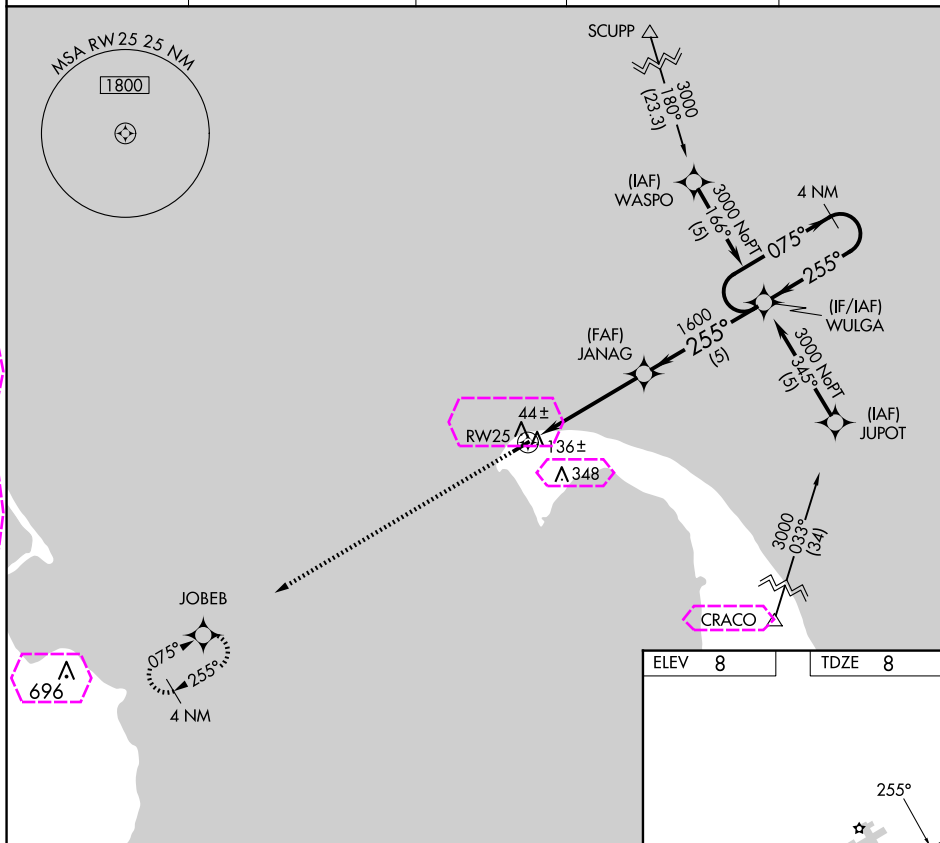
RNAV (GPS) RWY 25  
PROVINCETOWN MUNI (PVC)


PROVINCETOWN MUNI (PVC)

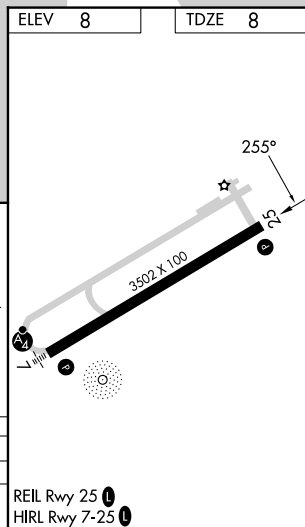
**T** DME/DME RNP-0.3 NA. When local altimeter setting not received, use Hyannis  
**A** altimeter setting and increase all MDA 80 feet. Rwy 25 helicopter visibility reduction  
below 1 SM NA. Straight-in Rwy 25 NA at night. Circling Rwy 25 NA at night.

**MISSED APPROACH:** Climb to 3000 direct JOBE and hold.

AWOS-3PT <b>119.275</b>	BOSTON APP CON <b>118.2</b>	CLNC DEL <b>120.65</b>	UNICOM <b>122.8</b> (CTAF)	<b>122.85</b>
----------------------------	--------------------------------	---------------------------	-------------------------------	---



	← 4.8 NM →		← 5 NM →		
CATEGORY	A		B		C
LNNAV MDA	400-1		392 (400-1)		NA
	460-1 452 (500-1)		660-1 652 (700-1)		NA



PROVINCETOWN, MASSACHUSETTS

AL-5313 (FAA)

25219

APP CRS	Rwy Ldg	3502
255°	TDZE	8
	Apt Elev	8

# RNAV (GPS) RWY 25

PROVINCETOWN MUNI (PVC)

**⚠** DME/DME RNP-0.3 NA. When local altimeter setting not received, use Hyannis altimeter setting and increase all MDA 80 feet. Rwy 25 helicopter visibility reduction below 1 SM NA. Straight-in Rwy 25 NA at night, Circling Rwy 25 NA at night.

**⚠** MISSED APPROACH: Climb to 3000 direct JOBEB and hold.

AWOS-3PT <b>119.275</b>	BOSTON APP CON <b>118.2</b>	CLNC DEL <b>120.65</b>	UNICOM <b>122.8</b> (CTAF)	<b>122.85</b> <b>0</b>
----------------------------	--------------------------------	---------------------------	-------------------------------	------------------------

